



[Go to Product page](#)

Datasheet for ABIN513561  
**anti-SERPINC1 antibody (AA 1-259)**

2 Images

Overview

Quantity:	50 µg
Target:	SERPINC1
Binding Specificity:	AA 1-259
Reactivity:	Human
Host:	Mouse
Clonality:	Polyclonal
Conjugate:	This SERPINC1 antibody is un-conjugated
Application:	Western Blotting (WB)

Product Details

Purpose:	Mouse polyclonal antibody raised against a full-length human SERPINC1 protein.
Immunogen:	SERPINC1 (AAH22309.1, 1 a.a. ~ 259 a.a) full-length human protein.
Sequence:	MYSNVIGTVT SGKRKYLLS LLLIGFWDCV TCHGSPVDIC TAKPRDIPMN PMCIYRSPEK KATEDEGSEQ KIPEATNRRV WELSKANSRF ATTFYQHLAD SKNDNDNIFL SPLSISTAFA MTKLGACNDT LQQLMEVFKF DTISEKTSQ IHFFFAKLNC RLYRKANKSS KLVSANRLF DKSLTFNDLY VSDAFHKAFL EVNEEGSEAA ASTAVVIAGR SLNPNRVTFK ANRPFLVFIR EVPLNTIIFM GRVANPCVK
Cross-Reactivity:	Human
Characteristics:	Antibody reactive against mammalian transfected lysate.

## Target Details

Target:	SERPINC1
Alternative Name:	SERPINC1 ( <a href="#">SERPINC1 Products</a> )
Background:	Full Gene Name: serpin peptidase inhibitor, clade C (antithrombin), member 1 Synonyms: AT3,ATIII,MGC22579
Gene ID:	462

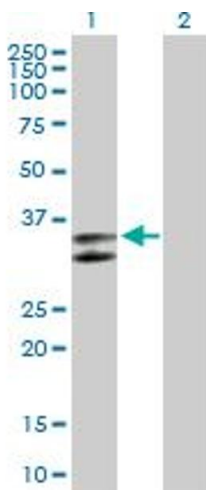
## Application Details

Application Notes:	Optimal working dilution should be determined by the investigator.
Restrictions:	For Research Use only

## Handling

Buffer:	In 1x PBS, pH 7.4
Handling Advice:	Aliquot to avoid repeated freezing and thawing.
Storage:	-20 °C
Storage Comment:	Store at -20°C or lower. Aliquot to avoid repeated freezing and thawing.

## Images

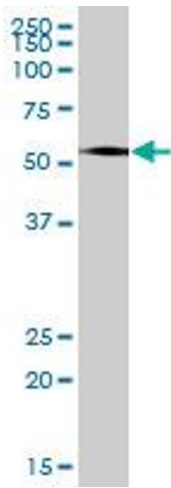


### Western Blotting

**Image 1.** Western Blot analysis of SERPINC1 expression in transfected 293T cell line by SERPINC1 MaxPab polyclonal antibody.

Lane 1: SERPINC1 transfected lysate(28.49 KDa).

Lane 2: Non-transfected lysate.



### Western Blotting

**Image 2.** SERPINC1 MaxPab polyclonal antibody. Western Blot analysis of SERPINC1 expression in human kidney.