



[Go to Product page](#)

Datasheet for ABIN513585  
**anti-ATOH1 antibody (AA 1-130)**

1 Image

Overview

Quantity:	100 µg
Target:	ATOH1
Binding Specificity:	AA 1-130
Reactivity:	Human
Host:	Mouse
Clonality:	Monoclonal
Conjugate:	This ATOH1 antibody is un-conjugated
Application:	Western Blotting (WB), ELISA

Product Details

Purpose:	Mouse monoclonal antibody raised against a full length recombinant ATOH1.
Immunogen:	ATOH1 (NP_005163, 1 a.a. ~ 130 a.a) full length recombinant protein with GST tag. MW of the GST tag alone is 26 KDa.
Sequence:	MSRLLHAEWV AEVKELGDHH RQPQPHLPQ PPPPPQPPAT LQAREHPVYP PELSLLDSTD PRAWLAPTLQ GICTARAAQY LLHSPELGAS EAAAPRDEVD GRGELVRRSS GGASSSKSPG PVKVREQLCK
Clone:	2B1
Isotype:	IgG2a
Cross-Reactivity:	Human
Characteristics:	Antibody Reactive Against Recombinant Protein.

## Target Details

Target:	ATOH1
Alternative Name:	ATOH1 ( <a href="#">ATOH1 Products</a> )
Background:	Full Gene Name: atonal homolog 1 (Drosophila) Synonyms: ATH1,HATH1,MATH-1,bHLHa14
Gene ID:	474
NCBI Accession:	<a href="#">NM_005172</a>

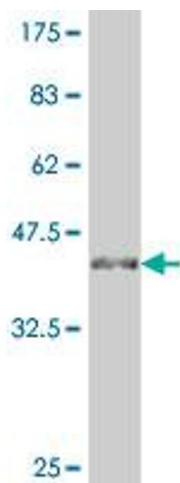
## Application Details

Application Notes:	Optimal working dilution should be determined by the investigator.
Restrictions:	For Research Use only

## Handling

Buffer:	In 1x PBS, pH 7.4
Handling Advice:	Aliquot to avoid repeated freezing and thawing.
Storage:	-20 °C
Storage Comment:	Store at -20°C or lower. Aliquot to avoid repeated freezing and thawing.

## Images



### Western Blotting

**Image 1.** Western Blot detection against Immunogen (40.3 KDa) .