



[Go to Product page](#)

Datasheet for ABIN513626

## anti-ATP6V1A antibody (AA 508-617)

### 6 Images

#### Overview

Quantity:	100 µg
Target:	ATP6V1A
Binding Specificity:	AA 508-617
Reactivity:	Human
Host:	Mouse
Clonality:	Monoclonal
Conjugate:	This ATP6V1A antibody is un-conjugated
Application:	Western Blotting (WB), ELISA, Immunohistochemistry (Paraffin-embedded Sections) (IHC (p)), Immunofluorescence (IF)

#### Product Details

Purpose:	Mouse monoclonal antibody raised against a partial recombinant ATP6V1A.
Immunogen:	ATP6V1A (NP_001681, 508 a.a. ~ 617 a.a) partial recombinant protein with GST tag. MW of the GST tag alone is 26 KDa.
Sequence:	TLEVAKLIKD DFLQQNGYTP YDRFCPFYKT VGMLSNMIAF YDMARRAVET TAQSDNKITW SIIREHMGDI LYKLSSMKFK DPLKDGEAKI KSDYAQLLED MQNAFRSLED
Clone:	4F5
Isotype:	IgG1
Cross-Reactivity:	Human
Characteristics:	Antibody Reactive Against Recombinant Protein.

## Target Details

Target:	ATP6V1A
Alternative Name:	ATP6V1A ( <a href="#">ATP6V1A Products</a> )
Background:	Full Gene Name: ATPase, H <sup>+</sup> transporting, lysosomal 70 kDa, V1 subunit A Synonyms: ATP6A1,ATP6V1A1,HO68,VA68,VPP2,Vma1
Gene ID:	523
NCBI Accession:	<a href="#">NM_001690</a>
Pathways:	<a href="#">Transition Metal Ion Homeostasis</a> , <a href="#">Proton Transport</a> , <a href="#">SARS-CoV-2 Protein Interactome</a>

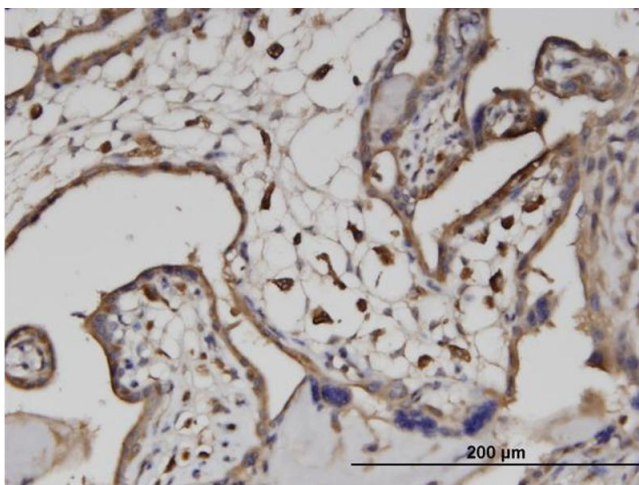
## Application Details

Application Notes:	Optimal working dilution should be determined by the investigator.
Restrictions:	For Research Use only

## Handling

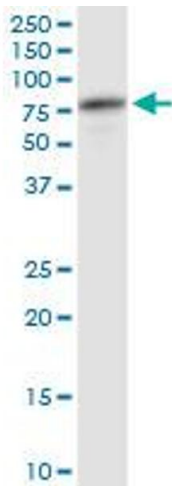
Buffer:	In 1x PBS, pH 7.4
Handling Advice:	Aliquot to avoid repeated freezing and thawing.
Storage:	-20 °C
Storage Comment:	Store at -20°C or lower. Aliquot to avoid repeated freezing and thawing.

## Images



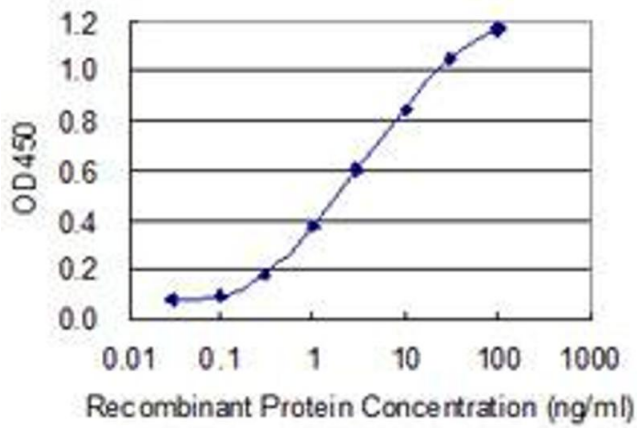
### Immunostaining

**Image 1.** Immunoperoxidase of monoclonal antibody to ATP6V1A on formalin-fixed paraffin-embedded human placenta. [antibody concentration 3 ug/ml]



### Western Blotting

**Image 2.** ATP6V1A monoclonal antibody (M02), clone 4F5. Western Blot analysis of ATP6V1A expression in human kidney.



### ELISA

**Image 3.** Detection limit for recombinant GST tagged ATP6V1A is 0.03 ng/ml as a capture antibody.

Please check the [product details page](#) for more images. Overall 6 images are available for ABIN513626.