

Datasheet for ABIN513631
anti-ATP6V1B2 antibody (AA 1-511)



[Go to Product page](#)

2 Images

Overview

Quantity:	100 µg
Target:	ATP6V1B2
Binding Specificity:	AA 1-511
Reactivity:	Human
Host:	Mouse
Clonality:	Monoclonal
Conjugate:	This ATP6V1B2 antibody is un-conjugated
Application:	Western Blotting (WB), ELISA

Product Details

Purpose:	Mouse monoclonal antibody raised against a full-length recombinant ATP6V1B2.
Immunogen:	ATP6V1B2 (AAH03100, 1 a.a. ~ 511 a.a) full-length recombinant protein with GST tag. MW of the GST tag alone is 26 KDa.
Sequence:	MALRAMRGIV NGAAPLPVP TGGPAVGARE QALAVSRNYL SQPRLTYKTV SGVNGPLVIL DHVKFPRYAE IVHLLTPDGT KRSGQVLEVS GSKAVVQVFE GTSGIDAKKT SCEFTGDILR TPVSEDMLGR VFNGSGKPID RGPVLAEDF LDIMGQPINP QCRIYPEEMI QTGISAIDGM NSIARGQKIP IFSAAGLPHN EIAAQICRQA GLVKKSKDVV DYSEENFAIV FAAMGVNMET ARFFKSDFEE NGSMDNVCLF LNLANPTIE RIITPRLALT TAEFLAYQCE KHVLVILTDM SSYAEALREV SAAREEVPGR RGFPGYMYTD LATIYERAGR VEGRNGSITQ IPILTMPNDD ITHPIPDLTG YITEGQIYVD RQLHNRQIYP PINVLPSLSR LMKSAIGEGM TRKDHADVSN QLYACYAIGK DVQAMKAVVG EEALTSDDL YLEFLQKFER NFIAQGPYEN RTVFETLDIG WQLLRIFPKE MLKRIPQSTL SEFYPRDSAK H

Product Details

Clone:	2A5
Isotype:	IgG1
Cross-Reactivity:	Human
Characteristics:	Antibody Reactive Against Recombinant Protein.

Target Details

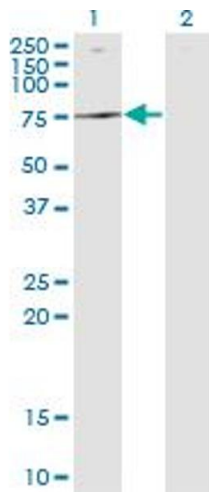
Target:	ATP6V1B2
Alternative Name:	ATP6V1B2 (ATP6V1B2 Products)
Background:	Full Gene Name: ATPase, H ⁺ transporting, lysosomal 56/58 kDa, V1 subunit B2 Synonyms: ATP6B1B2,ATP6B2,H057,VATB,VPP3,Vma2
Gene ID:	526
Pathways:	Transition Metal Ion Homeostasis , Proton Transport

Application Details

Application Notes:	Optimal working dilution should be determined by the investigator.
Restrictions:	For Research Use only

Handling

Buffer:	In 1x PBS, pH 7.4
Handling Advice:	Aliquot to avoid repeated freezing and thawing.
Storage:	-20 °C
Storage Comment:	Store at -20°C or lower. Aliquot to avoid repeated freezing and thawing.

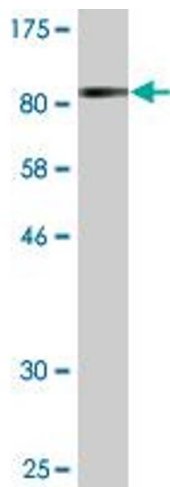


Western Blotting

Image 1. Western Blot analysis of ATP6V1B2 expression in transfected 293T cell line by ATP6V1B2 monoclonal antibody (M05), clone 2A5.

Lane 1: ATP6V1B2 transfected lysate (Predicted MW: 56.4 kDa).

Lane 2: Non-transfected lysate.



Western Blotting

Image 2. Western Blot detection against Immunogen (81.95 kDa).