

Datasheet for ABIN513661  
**anti-BAD antibody (AA 1-168)**[Go to Product page](#)

## 3 Images

## Overview

Quantity:	100 µg
Target:	BAD
Binding Specificity:	AA 1-168
Reactivity:	Human
Host:	Rabbit
Clonality:	Polyclonal
Conjugate:	This BAD antibody is un-conjugated
Application:	Western Blotting (WB), Proximity Ligation Assay (PLA)

## Product Details

Purpose:	Rabbit polyclonal antibody raised against a full-length human BAD protein.
Immunogen:	BAD (NP_004313.1, 1 a.a. ~ 168 a.a) full-length human protein.
Sequence:	MFQIPEFEPS EQEDSSSAER GLGPSPAGDG PSGSGKHHRQ APGLLWDASH QQEQPTSSSH HGGAGAVEIR SRHSSYPAGT EDDEGMGEEP SPFRGRSRSA PPNLWAAQRY GRELRMSDE FVDSFKKGLP RPKSAGTATQ MRQSSSWTRV FQSWWDRNLG RGSSAPSQ
Cross-Reactivity:	Human
Characteristics:	Antibody reactive against mammalian transfected lysate.

## Target Details

Target:	BAD
---------	-----

## Target Details

Alternative Name:	BAD ( <a href="#">BAD Products</a> )
Background:	Full Gene Name: BCL2-associated agonist of cell death Synonyms: BBC2,BCL2L8
Gene ID:	572
NCBI Accession:	<a href="#">NM_004322</a>
Pathways:	<a href="#">MAPK Signaling</a> , <a href="#">PI3K-Akt Signaling</a> , <a href="#">RTK Signaling</a> , <a href="#">Apoptosis</a> , <a href="#">Fc-epsilon Receptor Signaling Pathway</a> , <a href="#">Positive Regulation of Peptide Hormone Secretion</a> , <a href="#">Carbohydrate Homeostasis</a> , <a href="#">Positive Regulation of Endopeptidase Activity</a> , <a href="#">Regulation of Carbohydrate Metabolic Process</a> , <a href="#">Hepatitis C</a> , <a href="#">CXCR4-mediated Signaling Events</a>

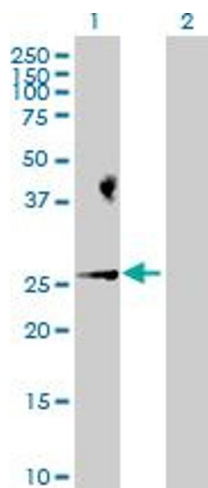
## Application Details

Application Notes:	Optimal working dilution should be determined by the investigator.
Restrictions:	For Research Use only

## Handling

Buffer:	In 1x PBS, pH 7.4
Handling Advice:	Aliquot to avoid repeated freezing and thawing.
Storage:	-20 °C
Storage Comment:	Store at -20°C or lower. Aliquot to avoid repeated freezing and thawing.

## Images

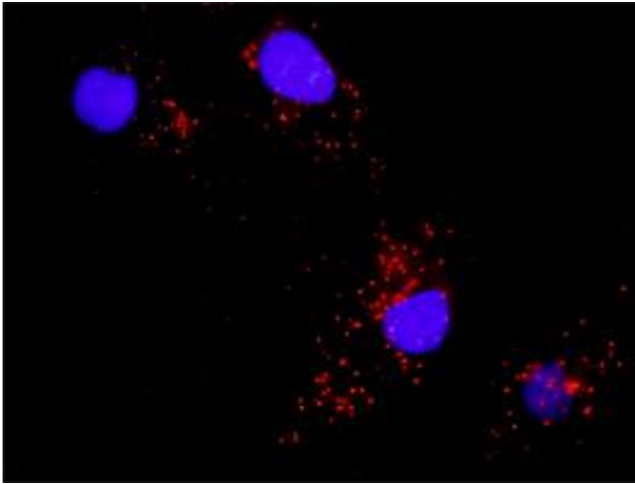


**Western Blotting**

**Image 1.** Western Blot analysis of BAD expression in transfected 293T cell line by BAD MaxPab polyclonal antibody.

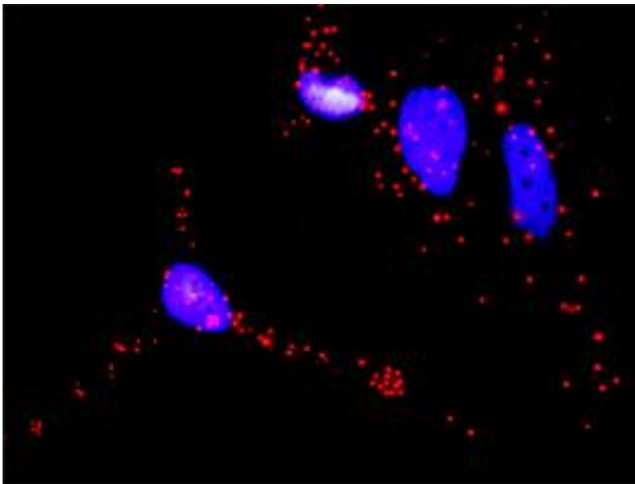
Lane 1: BAD transfected lysate(18.40 kDa).

Lane 2: Non-transfected lysate.



#### Proximity Ligation Assay

**Image 2.** Proximity Ligation Analysis of protein-protein interactions between BAD and MAPK8. Mahlavu cells were stained with anti-BAD rabbit purified polyclonal 1:1200 and anti-MAPK8 mouse monoclonal antibody 1:50. Each red dot represents the detection of protein-protein interaction complex, and nuclei were counterstained with DAPI (blue).



#### Proximity Ligation Assay

**Image 3.** Proximity Ligation Analysis of protein-protein interactions between BAD and RAF1. HeLa cells were stained with anti-BAD rabbit purified polyclonal 1:1200 and anti-RAF1 mouse monoclonal antibody 1:50. Each red dot represents the detection of protein-protein interaction complex, and nuclei were counterstained with DAPI (blue).