



[Go to Product page](#)

Datasheet for ABIN513663

anti-BAG1 antibody (AA 1-274)

3 Images

Overview

Quantity:	100 µg
Target:	BAG1
Binding Specificity:	AA 1-274
Reactivity:	Human
Host:	Rabbit
Clonality:	Polyclonal
Conjugate:	This BAG1 antibody is un-conjugated
Application:	Western Blotting (WB), Immunofluorescence (IF)

Product Details

Purpose:	Rabbit polyclonal antibody raised against a full-length human BAG1 protein.
Immunogen:	BAG1 (ENSP00000369026, 1 a.a. ~ 274 a.a) full-length human protein.
Sequence:	MKKKTRRRST RSEELTRSEE LTLSEEATWS EEATQSEEAT QGEEMNRSQE VTRDEESTRS EETREEMAA AGLTVTVTHS NEKHDLHVTS QQSSEPVVQ DLAQVVEEVI GVPQSFQKLI FKGKSLKEME TPLSALGIQD GCRVMLIGKK NSPQEEVELK KKHLEKSVE KIADQLEELN KELTGIQQGF LPKDLQAEAL CKLDRRVKAT IEQFMKILEE IDTLILPENF KDSRLKRKGL VKKVQAFLAE CDTVEQNICQ ETERLQSTNF ALAE
Cross-Reactivity:	Human
Characteristics:	Antibody reactive against mammalian transfected lysate.

Target Details

Target:	BAG1
Alternative Name:	BAG1 (BAG1 Products)
Background:	Full Gene Name: BCL2-associated athanogene Synonyms: RAP46
Gene ID:	573

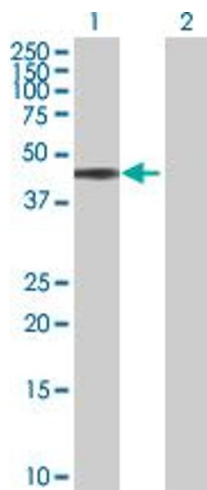
Application Details

Application Notes:	Optimal working dilution should be determined by the investigator.
Restrictions:	For Research Use only

Handling

Buffer:	In 1x PBS, pH 7.4
Handling Advice:	Aliquot to avoid repeated freezing and thawing.
Storage:	-20 °C
Storage Comment:	Store at -20°C or lower. Aliquot to avoid repeated freezing and thawing.

Images

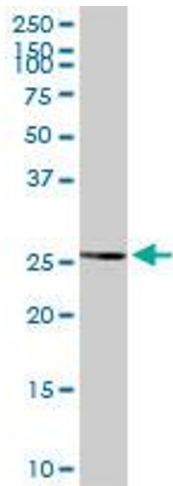


Western Blotting

Image 1. Western Blot analysis of BAG1 expression in transfected 293T cell line by BAG1 MaxPab polyclonal antibody.

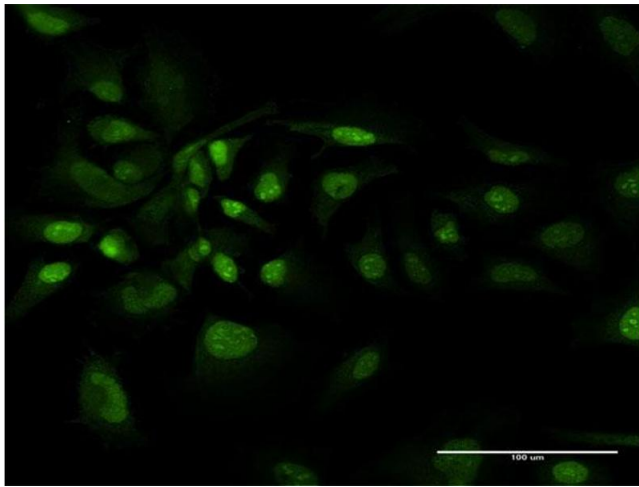
Lane 1: BAG1 transfected lysate(31.10 kDa).

Lane 2: Non-transfected lysate.



Western Blotting

Image 2. BAG1 MaxPab rabbit polyclonal antibody. Western Blot analysis of BAG1 expression in human placenta.



Immunofluorescence

Image 3. Immunofluorescence of purified MaxPab antibody to BAG1 on HeLa cell. [antibody concentration 10 ug/ml]