

Datasheet for ABIN513680  
**anti-BCL2L2 antibody (AA 1-193)**



[Go to Product page](#)

1 Image

## Overview

Quantity:	50 µg
Target:	BCL2L2
Binding Specificity:	AA 1-193
Reactivity:	Human
Host:	Mouse
Clonality:	Polyclonal
Conjugate:	This BCL2L2 antibody is un-conjugated
Application:	Western Blotting (WB)

## Product Details

Purpose:	Mouse polyclonal antibody raised against a full-length human BCL2L2 protein.
Immunogen:	BCL2L2 (NP_004041.1, 1 a.a. ~ 193 a.a) full-length human protein.
Sequence:	MATPASAPDT RALVADFDVGY KLRQKGYVCG AGPGEGPAAD PLHQAMRAAG DEFETRFRRRT FSDLAAQLHV TPGSAQQRFT QVSDELFFQGG PNWGRLLVAFF VFGAALCAES VNKEMEPLVG QVQEWVAVYL ETRLADWIHS SGGWAEFTAL YGDGALEEAR RLREGNWASV RTVLTGAVAL GALVTVGAFF ASK
Cross-Reactivity:	Human
Characteristics:	Antibody reactive against mammalian transfected lysate.

## Target Details

Target:	BCL2L2
---------	--------

## Target Details

Alternative Name:	BCL2L2 ( <a href="#">BCL2L2 Products</a> )
Background:	Full Gene Name: BCL2-like 2 Synonyms: BCL-W,BCLW,KIAA0271
Gene ID:	599
NCBI Accession:	<a href="#">NM_004050</a>

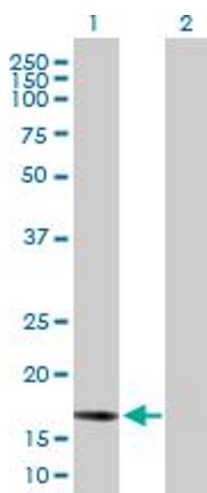
## Application Details

Application Notes:	Optimal working dilution should be determined by the investigator.
Restrictions:	For Research Use only

## Handling

Buffer:	In 1x PBS, pH 7.4
Handling Advice:	Aliquot to avoid repeated freezing and thawing.
Storage:	-20 °C
Storage Comment:	Store at -20°C or lower. Aliquot to avoid repeated freezing and thawing.

## Images



### Western Blotting

**Image 1.** Western Blot analysis of BCL2L2 expression in transfected 293T cell line by BCL2L2 MaxPab polyclonal antibody.

Lane 1: BCL2L2 transfected lysate(21.23 KDa).

Lane 2: Non-transfected lysate.