

Datasheet for ABIN513681  
**anti-BCL2L2 antibody (AA 1-193)**



[Go to Product page](#)

2 Images

## Overview

Quantity:	100 µg
Target:	BCL2L2
Binding Specificity:	AA 1-193
Reactivity:	Human
Host:	Mouse
Clonality:	Monoclonal
Conjugate:	This BCL2L2 antibody is un-conjugated
Application:	Western Blotting (WB), ELISA

## Product Details

Purpose:	Mouse monoclonal antibody raised against a full-length recombinant BCL2L2.
Immunogen:	BCL2L2 (NP_004041.1, 1 a.a. ~ 193 a.a) full-length recombinant protein with GST tag. MW of the GST tag alone is 26 KDa.
Sequence:	MATPASAPDT RALVADFGY KLRQKGYVCG AGPGEGPAAD PLHQAMRAAG DEFETRFRRRT FSDLAAQLHV TPGSAQQRFT QVSDQLFQGG PNWGRLVAFF VFGAALCAES VNKEMEPLVG QVQEWVAYL ETRLADWIHS SGGWAEFTAL YGDGALEEAR RLREGNWASV RTVLTGAVAL GALVTVGGAFF ASK
Clone:	2E4
Isotype:	IgG2a
Cross-Reactivity:	Human

## Product Details

---

Characteristics: Antibody Reactive Against Recombinant Protein.

## Target Details

---

Target: BCL2L2

Alternative Name: BCL2L2 ([BCL2L2 Products](#))

Background: Full Gene Name: BCL2-like 2  
Synonyms: BCL-W,BCLW,KIAA0271

Gene ID: 599

NCBI Accession: [NM\\_004050](#)

## Application Details

---

Application Notes: Optimal working dilution should be determined by the investigator.

Restrictions: For Research Use only

## Handling

---

Buffer: In 1x PBS, pH 7.4

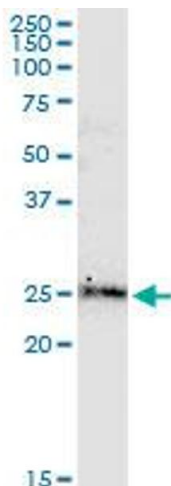
Handling Advice: Aliquot to avoid repeated freezing and thawing.

Storage: -20 °C

Storage Comment: Store at -20°C or lower. Aliquot to avoid repeated freezing and thawing.

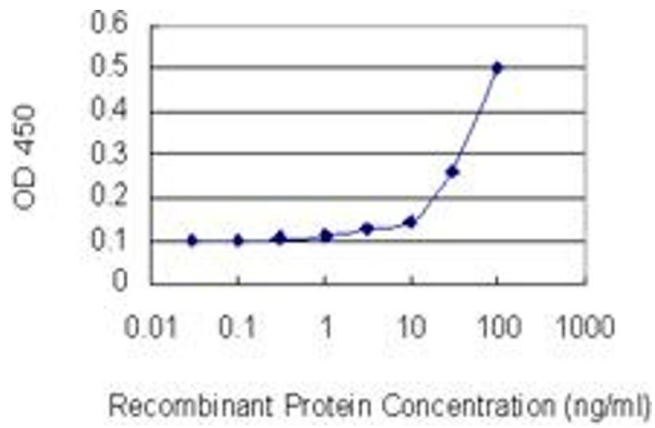
## Images

---



### Western Blotting

**Image 1.** BCL2L2 monoclonal antibody (M01), clone 2E4. Western Blot analysis of BCL2L2 expression in human colon.



## ELISA

**Image 2.** Detection limit for recombinant GST tagged BCL2L2 is 10 ng/ml as a capture antibody.