



[Go to Product page](#)

Datasheet for ABIN513684
anti-BCL3 antibody (AA 1-446)

2 Images

Overview

Quantity:	100 µL
Target:	BCL3
Binding Specificity:	AA 1-446
Reactivity:	Human
Host:	Rabbit
Clonality:	Polyclonal
Conjugate:	This BCL3 antibody is un-conjugated
Application:	Western Blotting (WB), Immunoprecipitation (IP)

Product Details

Purpose:	Rabbit polyclonal antibody raised against a full-length human BCL3 protein.
Immunogen:	BCL3 (NP_005169.1, 1 a.a. ~ 446 a.a) full-length human protein.
Sequence:	MDEGPVDLRT RPKAAGLPGA ALPLRKRPLR APSPEPAAPR GAAGLVVPLD PLRGGCDLPA VPGPPHGLAR PEALYYPGAL LPLYPTRAMG SPFPLVNLPT PLYPMMCPME HPLSADIAMA TRADEDGDTP LHIAVVQGNL PAVHRLVNLF QQGGRELDIY NNLRQTPLHL AVITTLPSV RLLVTAGASP MALDRHGQTA AHLACEHRSP TCLRALDSA APGLDLEAR NYDGLTALHV AVNTECQETV QLLLERGADI DAVDIKSGRS PLIHAVENNS LSMVQLLQH GANVNAQMYS GSSALHSASG RGLLPLVRTL VRSGADSSLK NCHNDTPLMV ARSRRVIDIL RGKATRPAST SQPDPSPDRS ANTSPSSSR LSSNGLLSAS PSSSPSQSPP RDPGPFMAP PNFFLPSPSP PAFLPFAGVL RGPGRPVPPS PAPGGS
Cross-Reactivity:	Human

Product Details

Characteristics: Antibody reactive against mammalian transfected lysate.

Target Details

Target: BCL3

Alternative Name: BCL3 ([BCL3 Products](#))

Background: Full Gene Name: B-cell CLL/lymphoma 3
Synonyms: BCL4,D19S37

Gene ID: 602

NCBI Accession: [NM_005178](#)

Pathways: [NF-kappaB Signaling](#), [Maintenance of Protein Location](#), [Protein targeting to Nucleus](#)

Application Details

Application Notes: Optimal working dilution should be determined by the investigator.

Restrictions: For Research Use only

Handling

Format: Liquid

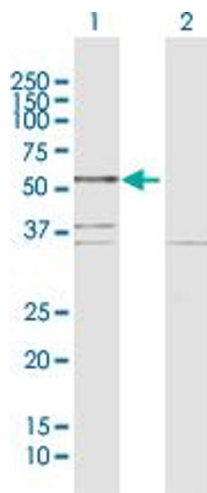
Buffer: No additive

Preservative: Without preservative

Handling Advice: Aliquot to avoid repeated freezing and thawing.

Storage: -20 °C

Storage Comment: Store at -20°C or lower. Aliquot to avoid repeated freezing and thawing.

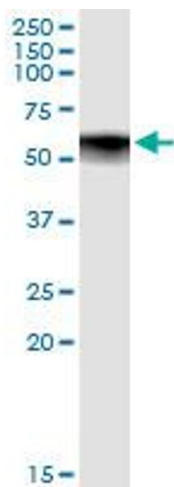


Western Blotting

Image 1. Western Blot analysis of BCL3 expression in transfected 293T cell line by BCL3 MaxPab polyclonal antibody.

Lane 1: BCL3 transfected lysate(46.8 KDa).

Lane 2: Non-transfected lysate.



Immunoprecipitation

Image 2. Immunoprecipitation of BCL3 transfected lysate using anti-BCL3 MaxPab rabbit polyclonal antibody and Protein A Magnetic Bead , and immunoblotted with BCL3 purified MaxPab mouse polyclonal antibody (B01P) .