



[Go to Product page](#)

Datasheet for ABIN513714

anti-Biglycan antibody (AA 1-368)

1 Image

1 Publication

Overview

Quantity:	100 µg
Target:	Biglycan (BGN)
Binding Specificity:	AA 1-368
Reactivity:	Human
Host:	Rabbit
Clonality:	Polyclonal
Conjugate:	This Biglycan antibody is un-conjugated
Application:	Western Blotting (WB)

Product Details

Purpose:	Rabbit polyclonal antibody raised against a full-length human BGN protein.
Immunogen:	BGN (NP_001702.1, 1 a.a. ~ 368 a.a) full-length human protein.
Sequence:	MWPLWRLVSL LALSQALPFE QRGFWDFTL DGPFMMNDEE ASGADTSGVL DPDSVTPTYS AMCPFGCHCH LRVVQCSDLG LKSVPKEISP DTTLLDLQNN DISELRKDDF KGLQHLYALV LVNNKISKIH EKAFSPLRKL QKLYISK NHL VEIPP NLPSS LVELRIHDNR IRKVPKGVFS GLRNMNCIEM GGNPLENSGF EPGA FDGLKL NYLRISEAKL TGIPKDLPET LNELHLDHNK IQAIELEDLL RYSKLYRLGL GHNQIRMIEN GSLSFLPTLR ELHLDNNKLA RVPSGLPDLK LLQVVYLHSN NITKVG V NDF CPMGFGVKRA YYNGISLFNN PVPYWEVQPA TFRCVTDRLA IQFGNYKK
Cross-Reactivity:	Human
Characteristics:	Antibody reactive against mammalian transfected lysate.

Target Details

Target:	Biglycan (BGN)
Alternative Name:	BGN (BGN Products)
Background:	Full Gene Name: biglycan Synonyms: DSPG1,PG-S1,PGI,SLRR1A
Gene ID:	633
NCBI Accession:	NM_001711
Pathways:	Glycosaminoglycan Metabolic Process

Application Details

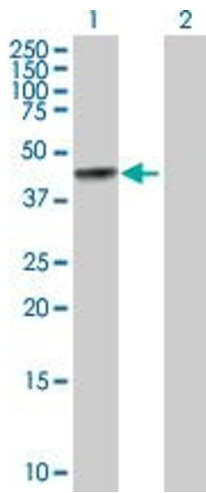
Application Notes:	Optimal working dilution should be determined by the investigator.
Restrictions:	For Research Use only

Handling

Buffer:	In 1x PBS, pH 7.4
Handling Advice:	Aliquot to avoid repeated freezing and thawing.
Storage:	-20 °C
Storage Comment:	Store at -20°C or lower. Aliquot to avoid repeated freezing and thawing.

Publications

Product cited in:	Gasimli, Stansfield, Nairn, Liu, Paluh, Yang, Dordick, Moremen, Linhardt: "Structural remodeling of proteoglycans upon retinoic acid-induced differentiation of NCCIT cells." in: Glycoconjugate journal , Vol. 30, Issue 5, pp. 497-510, (2013) (PubMed).
-------------------	---



Western Blotting

Image 1. Western Blot analysis of BGN expression in transfected 293T cell line by BGN MaxPab polyclonal antibody.

Lane 1: BGN transfected lysate(41.70 KDa).

Lane 2: Non-transfected lysate.