

Datasheet for ABIN513750
anti-BMP2 antibody (AA 283-396)[Go to Product page](#)

2 Images

1 Publication

Overview

Quantity:	100 µg
Target:	BMP2
Binding Specificity:	AA 283-396
Reactivity:	Human
Host:	Mouse
Clonality:	Monoclonal
Conjugate:	This BMP2 antibody is un-conjugated
Application:	ELISA, Proximity Ligation Assay (PLA)

Product Details

Purpose:	Mouse monoclonal antibody raised against a partial recombinant BMP2.
Immunogen:	BMP2 (NP_001191, 283 a.a. ~ 396 a.a) partial recombinant protein with GST tag. MW of the GST tag alone is 26 KDa.
Sequence:	QAKHKQRKRL KSSCKRHPLY VDFSDVGWND WIVAPPGYHA FYCHGECFPF LADHLNSTNH AIVQTLVNSV NSKIPKACCV PTELSAISML YLDENEKVVL KNYQDMVVEG CGCR
Clone:	4B12
Isotype:	IgG2a
Cross-Reactivity:	Human
Characteristics:	Antibody Reactive Against Recombinant Protein.

Target Details

Target:	BMP2
Alternative Name:	BMP2 (BMP2 Products)
Background:	Full Gene Name: bone morphogenetic protein 2 Synonyms: BMP2A
Gene ID:	650
NCBI Accession:	NM_001200
Pathways:	Regulation of Hormone Metabolic Process , Regulation of Hormone Biosynthetic Process , Regulation of Muscle Cell Differentiation , Growth Factor Binding , Positive Regulation of fat Cell Differentiation

Application Details

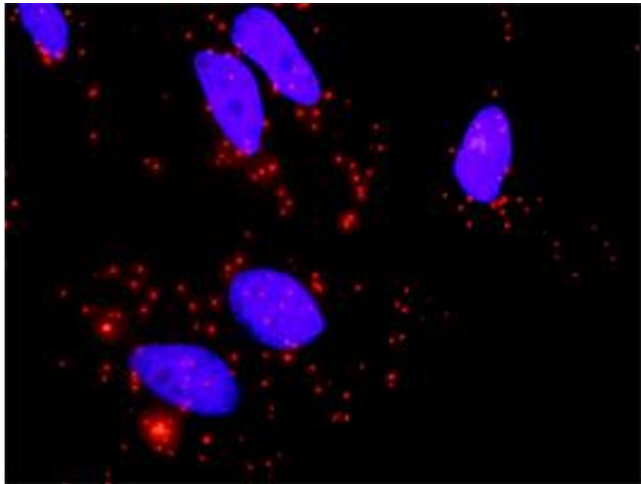
Application Notes:	Optimal working dilution should be determined by the investigator.
Restrictions:	For Research Use only

Handling

Buffer:	In 1x PBS, pH 7.4
Handling Advice:	Aliquot to avoid repeated freezing and thawing.
Storage:	-20 °C
Storage Comment:	Store at -20°C or lower. Aliquot to avoid repeated freezing and thawing.

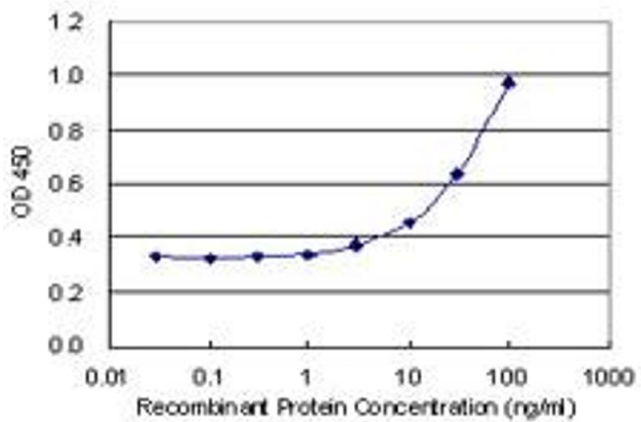
Publications

Product cited in:	Freire, You, Kook, Choi, Zadeh: "Antibody-mediated osseous regeneration: a novel strategy for bioengineering bone by immobilized anti-bone morphogenetic protein-2 antibodies." in: Tissue engineering. Part A , Vol. 17, Issue 23-24, pp. 2911-8, (2011) (PubMed).
-------------------	--



Proximity Ligation Assay

Image 1. Proximity Ligation Analysis of protein-protein interactions between TGFB2 and BMP2. HeLa cells were stained with anti-TGFB2 rabbit purified polyclonal 1:1200 and anti-BMP2 mouse monoclonal antibody 1:50. Each red dot represents the detection of protein-protein interaction complex, and nuclei were counterstained with DAPI (blue).



ELISA

Image 2. Detection limit for recombinant GST tagged BMP2 is 1 ng/ml as a capture antibody.