

Datasheet for ABIN513844  
**anti-SERPING1 antibody (AA 1-500)**



[Go to Product page](#)

3 Images

Overview

|                      |  |
|----------------------|--|
| Quantity:            | 50 µg  |
| Target:              | SERPING1   |
| Binding Specificity: | AA 1-500   |
| Reactivity:          | Human  |
| Host:                | Mouse  |
| Clonality:           | Polyclonal   |
| Conjugate:           | This SERPING1 antibody is un-conjugated  |
| Application:         | Western Blotting (WB), Immunohistochemistry (Paraffin-embedded Sections) (IHC (p)) |

Product Details

|            |  |
|------------|--|
| Purpose:   | Mouse polyclonal antibody raised against a full-length human SERPING1 protein.   |
| Immunogen: | SERPING1 (AAH11171.1, 1 a.a. ~ 500 a.a) full-length human protein.   |
| Sequence:  | MASRLTLLTL LLLLLAGDRA SSNPATSSS SQDPESLQDR GEGKVATTVI SKMLFVEPIL<br>EVSSLPTTNS TTNSATKITA NTTDEPTTQP TTEPTTQPTI QPTQPTTQLP TDSPTQPTTG<br>SFCPGPVTLT SDLESHSTEA VLGDALVDFS LKLYHAFSAM KKVETNMAFS PFSIASLLTQ<br>VLLGAGENTK TNLESILSYP KDFTCVHQAL KGFTTKGVTS VSQIFHSPDL AIRDTFVNAS<br>RTLYSSSPRV LSNNSDANLE LINTWVAKNT NNKISRLDLS LPSDTRLVLL NAIYLSAKWK<br>TTFDPKKTRM EPFHFKNQSVI KVPMMNNSKKY PVAHFIDQTL KAKVGQLQLS HNLSLVILVP<br>QNLKHRLEDM EQALSPSVFK AIMEKLEMSK FQPTLLTLPR IKVTTSQDML SIMEKLEFFD<br>FSYDLNLCGL TEDPDLQVSA MQHQTVLELT ETGVEAAAAS AISVARTLLV FEVQQPFLFM<br>LWDQQHKFPV FMGRVYDPRA |

## Product Details

---

|                   |   |
|-------------------|---|
| Cross-Reactivity: | Human   |
| Characteristics:  | Antibody reactive against mammalian transfected lysate. |

## Target Details

---

|                   |   |
|-------------------|---|
| Target:           | SERPING1  |
| Alternative Name: | SERPING1 ( <a href="#">SERPING1 Products</a> )  |
| Background:       | Full Gene Name: serpin peptidase inhibitor, clade G (C1 inhibitor), member 1<br>Synonyms: C1IN,C1INH,C1NH,HAE1,HAE2 |
| Gene ID:          | 710   |
| Pathways:         | <a href="#">Complement System</a>   |

## Application Details

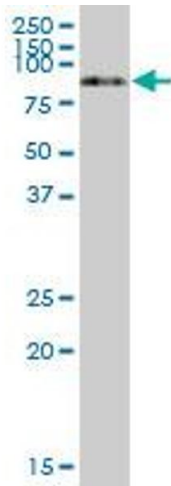
---

|                    |  |
|--------------------|--|
| Application Notes: | Optimal working dilution should be determined by the investigator. |
| Restrictions:      | For Research Use only  |

## Handling

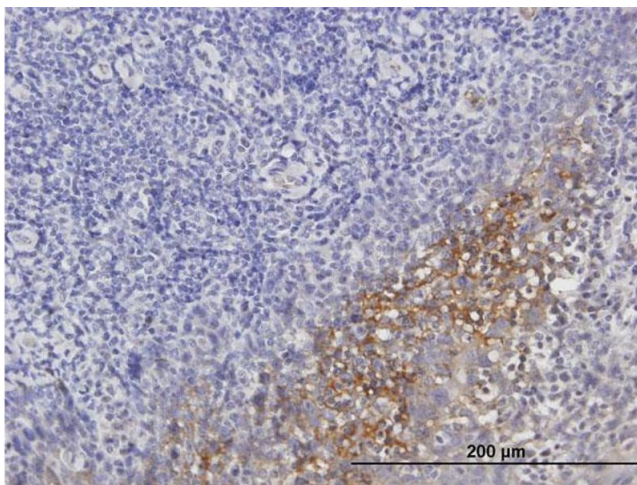
---

|                  |  |
|------------------|--|
| Buffer:          | In 1x PBS, pH 7.4  |
| Handling Advice: | Aliquot to avoid repeated freezing and thawing.                          |
| Storage:         | -20 °C   |
| Storage Comment: | Store at -20°C or lower. Aliquot to avoid repeated freezing and thawing. |



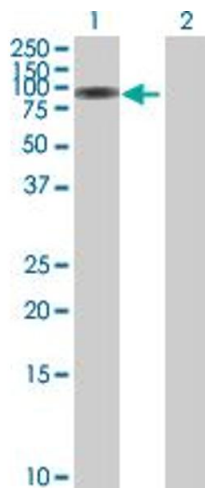
### Western Blotting

**Image 1.** SERPING1 MaxPab polyclonal antibody. Western Blot analysis of SERPING1 expression in human liver.



### Immunostaining

**Image 2.** Immunoperoxidase of purified MaxPab antibody to SERPING1 on formalin-fixed paraffin-embedded human tonsil. [antibody concentration 3 ug/ml]



### Western Blotting

**Image 3.** Western Blot analysis of SERPING1 expression in transfected 293T cell line by SERPING1 MaxPab polyclonal antibody.

Lane 1: SERPING1 transfected lysate(55 KDa).

Lane 2: Non-transfected lysate.