

Datasheet for ABIN513846
anti-SERPING1 antibody (AA 1-500)



[Go to Product page](#)

6 Images

Overview

Quantity:	100 µg
Target:	SERPING1
Binding Specificity:	AA 1-500
Reactivity:	Human
Host:	Mouse
Clonality:	Monoclonal
Conjugate:	This SERPING1 antibody is un-conjugated
Application:	Western Blotting (WB), ELISA, Immunoprecipitation (IP), Immunohistochemistry (Paraffin-embedded Sections) (IHC (p))

Product Details

Purpose:	Mouse monoclonal antibody raised against a full length recombinant SERPING1.
Immunogen:	SERPING1 (AAH11171, 1 a.a. ~ 500 a.a) full-length recombinant protein with GST tag. MW of the GST tag alone is 26 KDa.
Sequence:	MASRLTLLTL LLLLLAGDRA SSNPATSSS SQDPESLQDR GEGKVATTVI SKMLFVEPIL EVSSLPTTNS TTNSATKITA NTTDEPTTQP TTEPTTQPTI QPTQPTTQLP TDSPTQPTTG SFCPGPVTL C SDLESHSTEA VLGDALVDFS LKLYHAFSAM KKVETNMAFS PFSIASLLTQ VLLGAGENTK TNLESILSYP KDFTCVHQAL KGFTTKGVTS VSQIFHSPDL AIRDTFVNAS RTLYSSSPRV LSNNSDANLE LINTWVAKNT NTKISRLDLS LPSDTRLVLL NAIYLSAKWK TTFDPKKTRM EPFHFKN SVI KVPMMNSK KY PVAHFIDQTL KAKVGQLQLS HNLSLVILVP QNLKHRLED M EQALSPSVFK AIMEKLEMSK FQPTLLTLPR IKVTTSQDML SIMEKLEFFD FSYDLNLCGL TEDPDLQVSA MQHQTVLELT ETGVEAAAAS AISVARTLLV FEVQQPFLFM

Product Details

LWDQQHKFPV FMGRVYDPRA

Clone: 3F4-1D9

Isotype: IgG2a

Cross-Reactivity: Human

Characteristics: Antibody Reactive Against Recombinant Protein.

Target Details

Target: SERPING1

Alternative Name: SERPING1 ([SERPING1 Products](#))

Background: Full Gene Name: serpin peptidase inhibitor, clade G (C1 inhibitor), member 1

Synonyms: C1IN,C1INH,C1NH,HAE1,HAE2

Gene ID: 710

Pathways: [Complement System](#)

Application Details

Application Notes: Optimal working dilution should be determined by the investigator.

Restrictions: For Research Use only

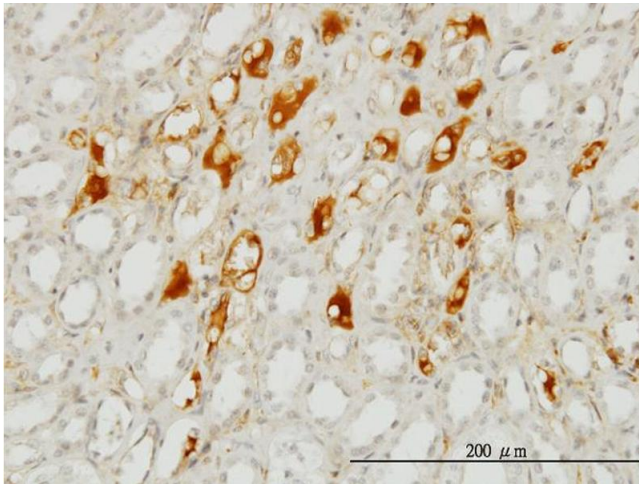
Handling

Buffer: In 1x PBS, pH 7.4

Handling Advice: Aliquot to avoid repeated freezing and thawing.

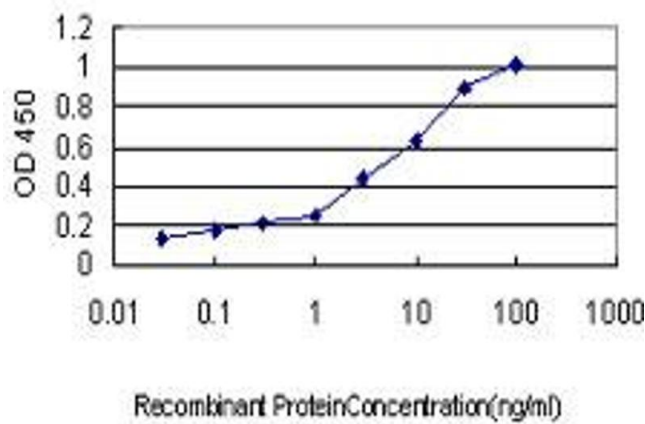
Storage: -20 °C

Storage Comment: Store at -20°C or lower. Aliquot to avoid repeated freezing and thawing.



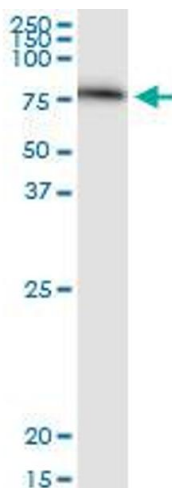
Immunostaining

Image 1. Immunoperoxidase of monoclonal antibody to SERPING1 on formalin-fixed paraffin-embedded human kidney. [antibody concentration 1 μ g/ml]



ELISA

Image 2. Detection limit for recombinant GST tagged SERPING1 is approximately 0.1 ng/ml as a capture antibody.



Western Blotting

Image 3. SERPING1 monoclonal antibody (M01), clone 3F4-1D9. Western Blot analysis of SERPING1 expression in human liver.

Please check the [product details page](#) for more images. Overall 6 images are available for ABIN513846.