



[Go to Product page](#)

Datasheet for ABIN513860
anti-C1S antibody (AA 1-688)

2 Images

Overview

Quantity:	50 µg
Target:	C1S
Binding Specificity:	AA 1-688
Reactivity:	Human
Host:	Mouse
Clonality:	Polyclonal
Conjugate:	This C1S antibody is un-conjugated
Application:	Western Blotting (WB)

Product Details

Purpose:	Mouse polyclonal antibody raised against a full-length human C1S protein.
Immunogen:	C1S (NP_001725.1, 1 a.a. ~ 688 a.a) full-length human protein.
Sequence:	MWCIVLFSLL AWVYAEPTMY GEILSPNYPQ AYPSEVEKSW DIEVPEGYGI HLYFTHLDIE LSENCAYDSV QIISGDTEEG RLCGQRSSNN PHSPIVEEFQ VPYNKLQVIF KSDFSNEERF TGFAAYYVAT DINECTDFVD VPCSHFCNNF IGGYFCSCPP EYFLHDDMKN CGVNCSGDVF TALIGEIASP NYPKYPENS RCEYQIRLEK GFQVVVTLRR EDFDVEAADS AGNCLDSLVE VAGDRQFGPY CGHGFPGPLN IETKSNALDI IFQDLDLGGK KGWKLRHGD PMPCPKEDTP NSWWEPAKAK YVFRDVVQIT CLDGFVEVEG RVGATSFYST CQSNKGWSNS KLKCPVDCG IPESIENGKV EDPESTLFGS VIRYTCEEPY YMENGSGGGE YHCAGNSWV NEVLGPELPK CVPVCGVPRE PFEEKQRIIG GSDADIKNFP WQVFFDNPWA GGALINEYWV LTAHVVEGN REPTMYVGST SVQTSRLAKS KMLTPEHVFI HPGWKLEVP EGRTNFDNDI ALVRLKDPVK MGPTVSPICL PGTSSDYNLM DGDGLGISGW GRTEKRDRAV RLKAARLPVA PLRKCKEVKV

Product Details

EKPTADAEAY VFTPNMICAG GEKGMDSCKG DSGGAFVQD PNDKTKFYAA GLVSWGPQCG
TYGLYTRVKN YVDWIMKTMQ ENSTPRED

Cross-Reactivity: Human

Characteristics: Antibody reactive against mammalian transfected lysate.

Target Details

Target: C1S

Alternative Name: C1S ([C1S Products](#))

Background: Full Gene Name: complement component 1, s subcomponent
Synonyms: FLJ44757

Gene ID: 716

NCBI Accession: [NM_001734](#)

Pathways: [Complement System](#)

Application Details

Application Notes: Optimal working dilution should be determined by the investigator.

Restrictions: For Research Use only

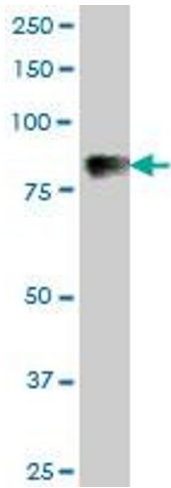
Handling

Buffer: In 1x PBS, pH 7.4

Handling Advice: Aliquot to avoid repeated freezing and thawing.

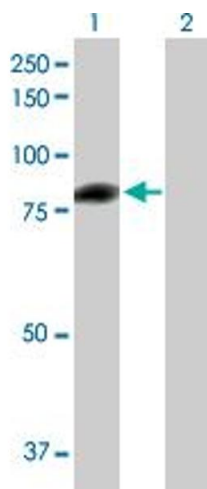
Storage: -20 °C

Storage Comment: Store at -20°C or lower. Aliquot to avoid repeated freezing and thawing.



Western Blotting

Image 1. C1S MaxPab polyclonal antibody. Western Blot analysis of C1S expression in human liver.



Western Blotting

Image 2. Western Blot analysis of C1S expression in transfected 293T cell line by C1S MaxPab polyclonal antibody.

Lane 1: C1S transfected lysate(75.68 KDa).

Lane 2: Non-transfected lysate.