



Datasheet for ABIN513882
anti-C5AR1 antibody (AA 1-350)



[Go to Product page](#)

2 Images

Overview

Quantity:	100 µg
Target:	C5AR1
Binding Specificity:	AA 1-350
Reactivity:	Human
Host:	Rabbit
Clonality:	Polyclonal
Conjugate:	This C5AR1 antibody is un-conjugated
Application:	Western Blotting (WB), Proximity Ligation Assay (PLA)

Product Details

Purpose:	Rabbit polyclonal antibody raised against a full-length human C5AR1 protein.
Immunogen:	C5AR1 (NP_001727.1, 1 a.a. ~ 350 a.a) full-length human protein.
Sequence:	MNSFNYYTPD YGHYDDKDTL DLNTPVDKTS NTLRVPDILA LVIFAVVFLV GVLGNALVWW VTAFEAKRTI NAIWFLNLAV ADFLSCLALP ILFTSIVQHH HWPFGGAACS ILPSLILLNM YASILLLATI SADRFLLVFK PIWCQNFRGA GLAWIACAVA WGLALLLTIP SFLYRVVREE YFPPKVLGCV DYSHDKRRER AVAIVRLVLG FLWPLLTLTI CYTFILLRTW SRRATRSTKT LKVVAVVAS FFIWLPYQV TGIMMSFLEP SSPTFLLLNK LDSLCVSFAY INCCINPIY VVAGQGFQGR LRKSLPSLLR NVLTEESVVR ESKSFTRSTV DTMAQKTQAV
Cross-Reactivity:	Human
Characteristics:	Antibody reactive against mammalian transfected lysate.

Target Details

Target:	C5AR1
Alternative Name:	C5AR1 (C5AR1 Products)
Background:	Full Gene Name: complement component 5a receptor 1 Synonyms: C5A,C5AR,C5R1,CD88
Gene ID:	728
NCBI Accession:	NM_001736
Pathways:	Complement System

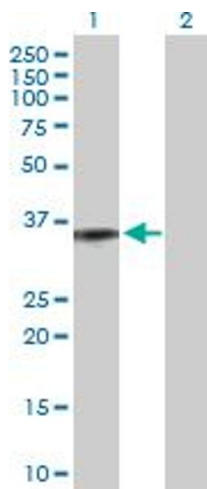
Application Details

Application Notes:	Optimal working dilution should be determined by the investigator.
Restrictions:	For Research Use only

Handling

Buffer:	In 1x PBS, pH 7.4
Handling Advice:	Aliquot to avoid repeated freezing and thawing.
Storage:	-20 °C
Storage Comment:	Store at -20°C or lower. Aliquot to avoid repeated freezing and thawing.

Images

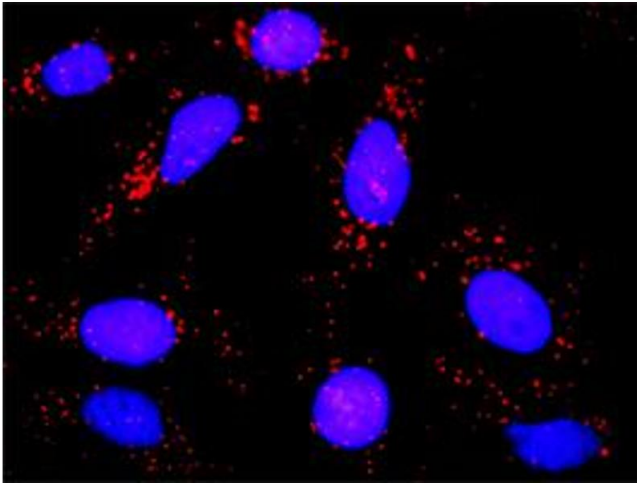


Western Blotting

Image 1. Western Blot analysis of C5AR1 expression in transfected 293T cell line by C5AR1 MaxPab polyclonal antibody.

Lane 1: C5AR1 transfected lysate(39.30 KDa).

Lane 2: Non-transfected lysate.



Proximity Ligation Assay

Image 2. Proximity Ligation Analysis of protein-protein interactions between C5AR1 and GNAI2. HeLa cells were stained with anti-C5AR1 rabbit purified polyclonal 1:1200 and anti-GNAI2 mouse monoclonal antibody 1:50. Each red dot represents the detection of protein-protein interaction complex, and nuclei were counterstained with DAPI (blue).