

Datasheet for ABIN513897
anti-MPPED2 antibody (AA 1-294)



[Go to Product page](#)

2 Images

Overview

Quantity:	200 µL
Target:	MPPED2
Binding Specificity:	AA 1-294
Reactivity:	Human
Host:	Mouse
Clonality:	Monoclonal
Conjugate:	This MPPED2 antibody is un-conjugated
Application:	Western Blotting (WB), ELISA

Product Details

Purpose:	Mouse monoclonal antibody raised against a full length recombinant MPPED2.
Immunogen:	MPPED2 (AAH31582, 1 a.a. ~ 294 a.a) full-length recombinant protein with GST tag. MW of the GST tag alone is 26 KDa.
Sequence:	MAHGIPSQGK VTITVDEYSS NPTQAFTHYN INQSRFQPPH VHMVDPIPYD TPKPAGHTRF VCISDTHSRT DGIQMPYGDI LLHTGDFTEL GLPSEVKKFN DWLGNLPYEY KIVIAGNHEL TFDKEFMADL VKQDYRFPV VSKLKPEDFD NVQSLLTNSI YLQDSEVTVK GFRIYGAPWT PWFNGWGFNL PRGQSLLDKW NLIPEGIDIL MTHGPPLGFR DWVPKELQRV GCVELLNTVQ RRVRPKLHV FGGIHEGYGIM TDGYTTYINA STCTVSFQPT NPPIIFDLPN PQGS
Clone:	2G1-1B7
Isotype:	IgM kappa
Cross-Reactivity:	Human

Target Details

Target:	MPPED2
Alternative Name:	MPPED2 (MPPED2 Products)
Background:	Full Gene Name: metallophosphoesterase domain containing 2 Synonyms: 239FB,C11orf8,D11S302E,FAM1B,Hs.46638,dJ1024C24.1,dJ873F21.1
Gene ID:	744

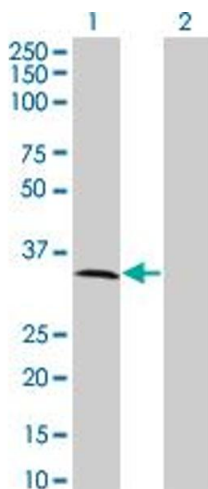
Application Details

Application Notes:	Optimal working dilution should be determined by the investigator.
Comment:	Product Quality tested by: Antibody Reactive Against Recombinant Protein.
Restrictions:	For Research Use only

Handling

Format:	Liquid
Buffer:	In ascites fluid
Handling Advice:	Aliquot to avoid repeated freezing and thawing.
Storage:	-20 °C
Storage Comment:	Store at -20°C or lower. Aliquot to avoid repeated freezing and thawing.

Images

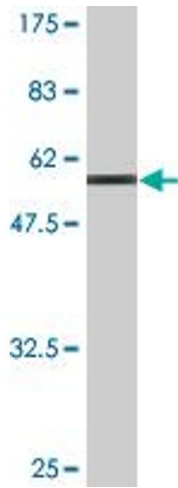


Western Blotting

Image 1. Western Blot analysis of MPPED2 expression in transfected 293T cell line by C11orf8 monoclonal antibody (M01A), clone 2G1-1B7.

Lane 1: MPPED2 transfected lysate(33.81 KDa).

Lane 2: Non-transfected lysate.



Western Blotting

Image 2. Western Blot detection against Immunogen (58.08 kDa).