

Datasheet for ABIN513898
anti-MPPED2 antibody (AA 1-294)



[Go to Product page](#)

3 Images

Overview

Quantity:	100 µg
Target:	MPPED2
Binding Specificity:	AA 1-294
Reactivity:	Human
Host:	Mouse
Clonality:	Monoclonal
Conjugate:	This MPPED2 antibody is un-conjugated
Application:	Western Blotting (WB), ELISA

Product Details

Purpose:	Mouse monoclonal antibody raised against a full-length recombinant MPPED2.
Immunogen:	MPPED2 (AAH31582, 1 a.a. ~ 294 a.a) full-length recombinant protein with GST tag. MW of the GST tag alone is 26 KDa.
Sequence:	MAHGIPSQGK VTITVDEYSS NPTQAFTHYN INQSRFQPPH VHMVDPIPYD TPKPAGHTRF VCISDTHSRT DGIQMPYGGI LLHTGDFTEL GLPSEVKKFN DWLGNLPYEY KIVIAGNHEL TFDKEFMADL VKQDYRFPV VSKLKPEDFD NVQSLLTNSI YLQDSEVTVK GFRIYGAPWT PWFNGWGFNL PRGQSLLDKW NLIPEGIDIL MTHGPPLGFR DWVPKELQRV GCVELLNTVQ RRVRPKLHV FGGIHEGYGIM TDGYTTYINA STCTVSFQPT NPPIIFDLPN PQGS
Clone:	4H5
Isotype:	IgG2a
Cross-Reactivity:	Human

Product Details

Characteristics: Antibody Reactive Against Recombinant Protein.

Target Details

Target: MPPED2

Alternative Name: MPPED2 ([MPPED2 Products](#))

Background: Full Gene Name: metallophosphoesterase domain containing 2
Synonyms: 239FB,C11orf8,D11S302E,FAM1B,Hs.46638,dJ1024C24.1,dJ873F21.1

Gene ID: 744

Application Details

Application Notes: Optimal working dilution should be determined by the investigator.

Restrictions: For Research Use only

Handling

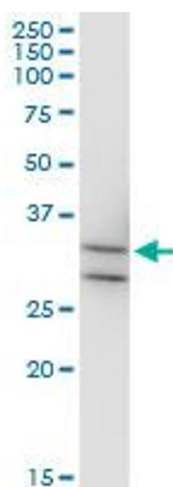
Buffer: In 1x PBS, pH 7.4

Handling Advice: Aliquot to avoid repeated freezing and thawing.

Storage: -20 °C

Storage Comment: Store at -20°C or lower. Aliquot to avoid repeated freezing and thawing.

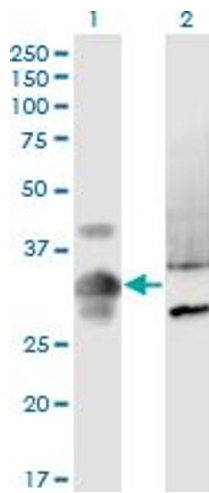
Images



Western Blotting

Image 1. MPPED2 monoclonal antibody (M08), clone 4H5.

Western Blot analysis of MPPED2 expression in IMR-32.

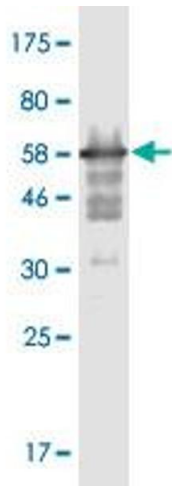


Western Blotting

Image 2. Western Blot analysis of MPPED2 expression in transfected 293T cell line by MPPED2 monoclonal antibody (M08), clone 4H5.

Lane 1: MPPED2 transfected lysate(33.4 KDa).

Lane 2: Non-transfected lysate.



Western Blotting

Image 3. Western Blot detection against Immunogen (58.08 KDa).