



[Go to Product page](#)

Datasheet for ABIN513921
anti-CA6 antibody (AA 1-308)

1 Image

Overview

| | |
|----------------------|------------------------------------|
| Quantity: | 50 µg |
| Target: | CA6 |
| Binding Specificity: | AA 1-308 |
| Reactivity: | Human |
| Host: | Mouse |
| Clonality: | Polyclonal |
| Conjugate: | This CA6 antibody is un-conjugated |
| Application: | Western Blotting (WB) |

Product Details

| | |
|-------------------|--|
| Purpose: | Mouse polyclonal antibody raised against a full-length human CA6 protein. |
| Immunogen: | CA6 (NP_001206.2, 1 a.a. ~ 308 a.a) full-length human protein. |
| Sequence: | MRALVLLLSL FLLGGQAQHV SDWTYSEGAL DEAHWPQHYP ACGGQRQSPI NLQRTKVRYN PSLKGLNMTG YETQAGEFPM VNNGHTVQIS LPSTMRMTVA DGTVYIAQQM HFHWGGASSE ISGSEHTVDG IRHVIEIHIV HYNKYKSYD IAQDAPDGLA VLAAFVEVKN YPENTYYSNF ISHLANIKYP GQRRTLTLGLD VQDMLPRNLQ HYYTYHGSLT TPPCTENVHW FVLADFKLS RTQVWKLENS LLDHRNKTIH NDYRRTQPLN HRWVESNFPN QEYTLGSEFQ FYLHKIEEIL DYLRRALN |
| Cross-Reactivity: | Human |
| Characteristics: | Antibody reactive against mammalian transfected lysate. |

Target Details

| | |
|-------------------|--|
| Target: | CA6 |
| Alternative Name: | CA6 (CA6 Products) |
| Background: | Full Gene Name: carbonic anhydrase VI Synonyms: GUSTIN,MGC21256 |
| Gene ID: | 765 |
| NCBI Accession: | NM_001215 |

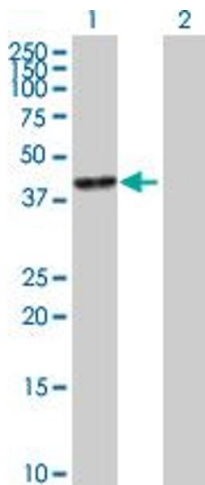
Application Details

| | |
|--------------------|--|
| Application Notes: | Optimal working dilution should be determined by the investigator. |
| Restrictions: | For Research Use only |

Handling

| | |
|------------------|--|
| Buffer: | In 1x PBS, pH 7.4 |
| Handling Advice: | Aliquot to avoid repeated freezing and thawing. |
| Storage: | -20 °C |
| Storage Comment: | Store at -20°C or lower. Aliquot to avoid repeated freezing and thawing. |

Images



Western Blotting

Image 1. Western Blot analysis of CA6 expression in transfected 293T cell line by CA6 MaxPab polyclonal antibody.

Lane 1: CA6 transfected lysate(33.88 KDa).

Lane 2: Non-transfected lysate.