



[Go to Product page](#)

Datasheet for ABIN513922
anti-CA6 antibody (AA 209-308)

1 Image

Overview

Quantity:	100 µg
Target:	CA6
Binding Specificity:	AA 209-308
Reactivity:	Human
Host:	Mouse
Clonality:	Monoclonal
Conjugate:	This CA6 antibody is un-conjugated
Application:	ELISA

Product Details

Purpose:	Mouse monoclonal antibody raised against a partial recombinant CA6.
Immunogen:	CA6 (NP_001206.2, 209 a.a. ~ 308 a.a) partial recombinant protein with GST tag. MW of the GST tag alone is 26 KDa.
Sequence:	LQHYYTYHGS LTPPCTENV HWFVLADFVK LSRTQVWKLE NSLLDHRNKT IHNDYRRTQP LNHRVVESNF PNQEYTLGSE FQFYLHKIEE ILDYLRRLN
Clone:	1G12
Isotype:	IgG2b
Cross-Reactivity:	Human
Characteristics:	Antibody Reactive Against Recombinant Protein.

Target Details

Target:	CA6
Alternative Name:	CA6 (CA6 Products)
Background:	Full Gene Name: carbonic anhydrase VI Synonyms: GUSTIN,MGC21256
Gene ID:	765
NCBI Accession:	NM_001215

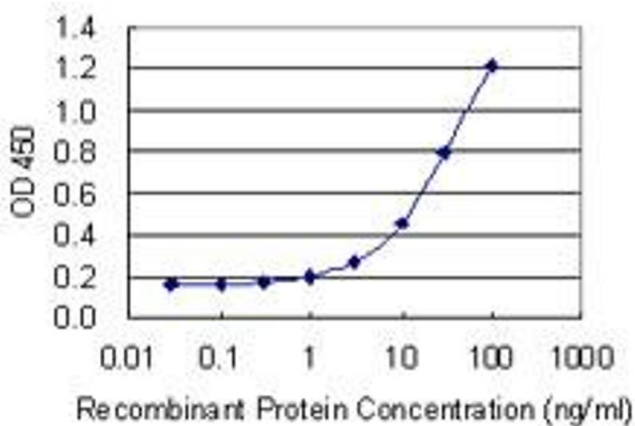
Application Details

Application Notes:	Optimal working dilution should be determined by the investigator.
Restrictions:	For Research Use only

Handling

Buffer:	In 1x PBS, pH 7.4
Handling Advice:	Aliquot to avoid repeated freezing and thawing.
Storage:	-20 °C
Storage Comment:	Store at -20°C or lower. Aliquot to avoid repeated freezing and thawing.

Images



ELISA

Image 1. Detection limit for recombinant GST tagged CA6 is 0.3 ng/ml as a capture antibody.