



[Go to Product page](#)

Datasheet for ABIN513944  
**anti-CACNG1 antibody (AA 1-222)**

1 Image

Overview

Quantity:	100 µg
Target:	CACNG1
Binding Specificity:	AA 1-222
Reactivity:	Human
Host:	Rabbit
Clonality:	Polyclonal
Conjugate:	This CACNG1 antibody is un-conjugated
Application:	Western Blotting (WB)

Product Details

Purpose:	Rabbit polyclonal antibody raised against a full-length human CACNG1 protein.
Immunogen:	CACNG1 (NP_000718.1, 1 a.a. ~ 222 a.a) full-length human protein.
Sequence:	MSQTKMLKVR VTLFCILAGI VLAMTAVVTD HWAVLSPHME HHNTTCEAAH FGLWRICKR IPMDDSKTCG PITLPGEKNC SYFRHFNPGE SSEIFEFTTQ KEYSISAAAI AIFSLGFIIL GSLCVLLSLG KKRDYLLRPA SMFYAFAGLC ILVSVEVMRQ SVKRMIDSED TVWIEYYYSW SFACACAAFI LLFLGGLALL LFSLPRMPRN PWESCMDAEP EH
Cross-Reactivity:	Human
Characteristics:	Antibody reactive against mammalian transfected lysate.

Target Details

Target:	CACNG1
---------	--------

## Target Details

Alternative Name:	CACNG1 ( <a href="#">CACNG1 Products</a> )
Background:	Full Gene Name: calcium channel, voltage-dependent, gamma subunit 1 Synonyms: CACNLG
Gene ID:	786
NCBI Accession:	<a href="#">NM_000727</a>

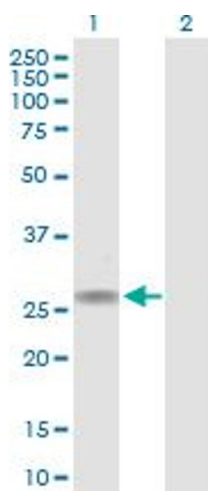
## Application Details

Application Notes:	Optimal working dilution should be determined by the investigator.
Restrictions:	For Research Use only

## Handling

Buffer:	In 1x PBS, pH 7.4
Handling Advice:	Aliquot to avoid repeated freezing and thawing.
Storage:	-20 °C
Storage Comment:	Store at -20°C or lower. Aliquot to avoid repeated freezing and thawing.

## Images



### Western Blotting

**Image 1.** Western Blot analysis of CACNG1 expression in transfected 293T cell line by CACNG1 MaxPab polyclonal antibody.

Lane 1: CACNG1 transfected lysate(25.00 KDa).

Lane 2: Non-transfected lysate.