

Datasheet for ABIN513947  
**anti-CGRP antibody (AA 1-141)**



[Go to Product page](#)

1 Image

## Overview

|                      |                                     |
|----------------------|-------------------------------------|
| Quantity:            | 50 µL                               |
| Target:              | CGRP (CALCA)                        |
| Binding Specificity: | AA 1-141                            |
| Reactivity:          | Human                               |
| Host:                | Mouse                               |
| Clonality:           | Polyclonal                          |
| Conjugate:           | This CGRP antibody is un-conjugated |
| Application:         | Western Blotting (WB)               |

## Product Details

|                   |   |
|-------------------|---|
| Purpose:          | Mouse polyclonal antibody raised against a full-length human CALCA protein.   |
| Immunogen:        | CALCA (NP_001732, 1 a.a. ~ 141 a.a) full-length human protein.  |
| Sequence:         | MGFQKFSPFL ALSILVLLQA GSLHAAPFRS ALESSPADPA TLSEDEARLL LAALVQDYVQ<br>MKASELEQEQ EREGSSLDSP RSKRCGNLST CMLGTYTQDF NKFHFTFPQTA IGVGAPGKKR<br>DMSSDLERDH RPHVSM PQNA N |
| Cross-Reactivity: | Human   |
| Characteristics:  | Antibody reactive against mammalian transfected lysate.   |

## Target Details

|         |              |
|---------|--------------|
| Target: | CGRP (CALCA) |
|---------|--------------|

## Target Details

---

|                   |  |
|-------------------|--|
| Alternative Name: | CALCA ( <a href="#">CALCA Products</a> )   |
| Background:       | Full Gene Name: calcitonin-related polypeptide alpha<br>Synonyms: CALC1,CGRP,CGRP-I,CGRP1,CT,KC,MGC126648  |
| Gene ID:          | 796  |
| NCBI Accession:   | <a href="#">NM_001741</a>  |
| Pathways:         | <a href="#">Hormone Activity</a> , <a href="#">cAMP Metabolic Process</a> , <a href="#">Myometrial Relaxation and Contraction</a> , <a href="#">Regulation of G-Protein Coupled Receptor Protein Signaling</a> , <a href="#">Skeletal Muscle Fiber Development</a> , <a href="#">Feeding Behaviour</a> |

## Application Details

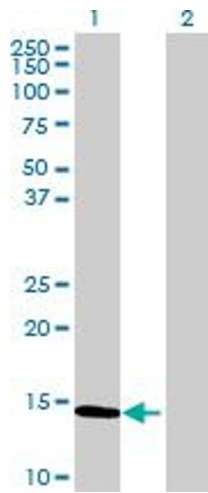
---

|                    |  |
|--------------------|--|
| Application Notes: | Optimal working dilution should be determined by the investigator. |
| Restrictions:      | For Research Use only  |

## Handling

---

|                  |  |
|------------------|--|
| Format:          | Liquid   |
| Buffer:          | No additive  |
| Preservative:    | Without preservative   |
| Handling Advice: | Aliquot to avoid repeated freezing and thawing.                          |
| Storage:         | -20 °C   |
| Storage Comment: | Store at -20°C or lower. Aliquot to avoid repeated freezing and thawing. |



### Western Blotting

**Image 1.** Western Blot analysis of CALCA expression in transfected 293T cell line by CALCA MaxPab polyclonal antibody.

Lane 1: CALCA transfected lysate(15.51 KDa).

Lane 2: Non-transfected lysate.