

Datasheet for ABIN513973  
**anti-CAMK2A antibody (AA 305-410)**

## 5 Images

[Go to Product page](#)

## Overview

Quantity:	100 µg
Target:	CAMK2A
Binding Specificity:	AA 305-410
Reactivity:	Human
Host:	Mouse
Clonality:	Monoclonal
Conjugate:	This CAMK2A antibody is un-conjugated
Application:	Western Blotting (WB), ELISA, Immunofluorescence (IF), Proximity Ligation Assay (PLA)

## Product Details

Purpose:	Mouse monoclonal antibody raised against a partial recombinant CAMK2A.
Immunogen:	CAMK2A (AAH40457, 305 a.a. ~ 410 a.a) partial recombinant protein with GST tag. MW of the GST tag alone is 26 KDa.
Sequence:	TTMLATRNFS GKGSGGNKKS DGVKESSEST NTTIEDEDTK VRKQEIIKVT EQLIEAISNG DFESYTKMCD PGMTAFEPEA LGNLVEGLDF HRFYFENLWS RNSKPV
Clone:	2C11
Isotype:	IgG2b
Cross-Reactivity:	Human
Characteristics:	Antibody Reactive Against Recombinant Protein.

Target Details

Target:	CAMK2A
Alternative Name:	CAMK2A ( <a href="#">CAMK2A Products</a> )
Background:	Full Gene Name: calcium/calmodulin-dependent protein kinase II alpha Synonyms: CAMKA,KIAA0968
Gene ID:	815
Pathways:	<a href="#">WNT Signaling</a> , <a href="#">Interferon-gamma Pathway</a> , <a href="#">Myometrial Relaxation and Contraction</a>

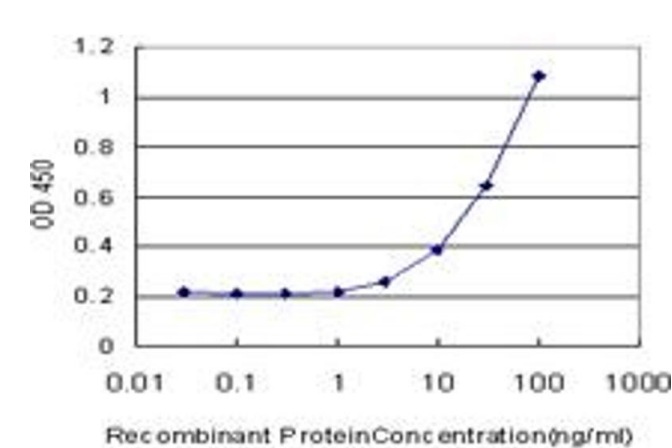
Application Details

Application Notes:	Optimal working dilution should be determined by the investigator.
Restrictions:	For Research Use only

Handling

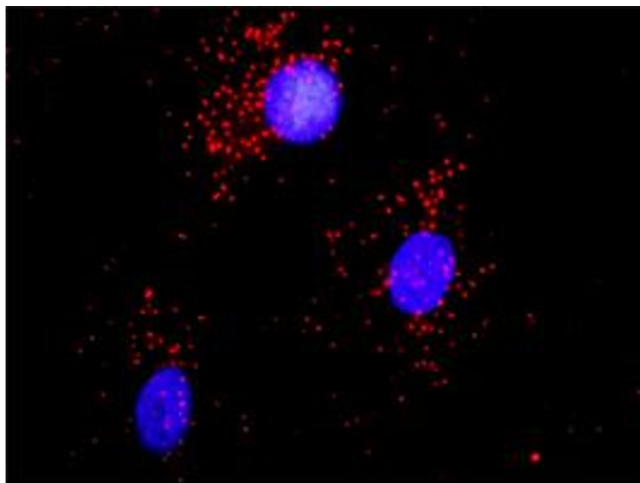
Buffer:	In 1x PBS, pH 7.4
Handling Advice:	Aliquot to avoid repeated freezing and thawing.
Storage:	-20 °C
Storage Comment:	Store at -20°C or lower. Aliquot to avoid repeated freezing and thawing.

Images



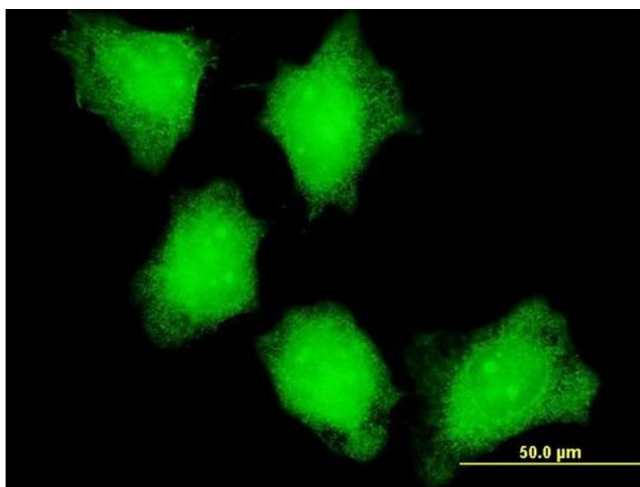
**ELISA**

**Image 1.** Detection limit for recombinant GST tagged CAMK2A is approximately 1ng/ml as a capture antibody.



#### Proximity Ligation Assay

**Image 2.** Proximity Ligation Analysis of protein-protein interactions between ACTN1 and CAMK2A. HeLa cells were stained with anti-ACTN1 rabbit purified polyclonal 1:1200 and anti-CAMK2A mouse monoclonal antibody 1:50. Each red dot represents the detection of protein-protein interaction complex, and nuclei were counterstained with DAPI (blue).



#### Immunofluorescence

**Image 3.** Immunofluorescence of monoclonal antibody to CAMK2A on HeLa cell. [antibody concentration 10 ug/ml]

Please check the [product details page](#) for more images. Overall 5 images are available for ABIN513973.