

Datasheet for ABIN513978
anti-CAMK2D antibody (AA 1-478)



[Go to Product page](#)

1 Image

Overview

Quantity:	100 µg
Target:	CAMK2D
Binding Specificity:	AA 1-478
Reactivity:	Human
Host:	Rabbit
Clonality:	Polyclonal
Conjugate:	This CAMK2D antibody is un-conjugated
Application:	Western Blotting (WB)

Product Details

Purpose:	Rabbit polyclonal antibody raised against a full-length human CAMK2D protein.
Immunogen:	CAMK2D (NP_742126.1, 1 a.a. ~ 478 a.a) full-length human protein.
Sequence:	MASTTTCTRF TDEYQLFEEL GKGAFSVVRR CMKIPTGQEY AAKIINTKKL SARDHQKLER EARICRLLKH PNIVRLHDSI SEEGFHLYLVF DLVTGGELFE DIVAREYYSE ADASHCIQQI LESVNHCHLN GIVHRDLKPE NLLLASKSKG AAVKLADFGL AIEVQGDQQA WFGFAGTPGY LSPEVLRKDP YGKPVDMWAC GVILYILLVG YPPFWDEDQH RLYQQIKAGA YDFPSPWDT VTPEAKDLIN KMLTINPAKR ITASEALKHP WICQRSTVAS MMHRQETVDC LKKFNARRKL KGAILTTMLA TRNFSAAKSL LKKPDGVKES TESSNTTIED EDVKARKQEI IKVTEQLIEA INNGDFEAYT KICDPGLTAF EPEALGNLVE GMDFHRFYFE NALSKSNKPI HTIILNPHVH LVGDAAACIA YIRLTQYMDG SGMPKTMQSE ETRVWHRRDG KWQNVHFHRS GSPTVPIN
Cross-Reactivity:	Human

Product Details

Characteristics: Antibody reactive against mammalian transfected lysate.

Target Details

Target: CAMK2D

Alternative Name: CAMK2D ([CAMK2D Products](#))

Background: Full Gene Name: calcium/calmodulin-dependent protein kinase II delta
Synonyms: CAMKD,DKFZp686G23119,DKFZp686I2288,MGC44911

Gene ID: 817

NCBI Accession: [NM_172128](#)

Pathways: [WNT Signaling](#), [Interferon-gamma Pathway](#), [Myometrial Relaxation and Contraction](#), [Smooth Muscle Cell Migration](#)

Application Details

Application Notes: Optimal working dilution should be determined by the investigator.

Restrictions: For Research Use only

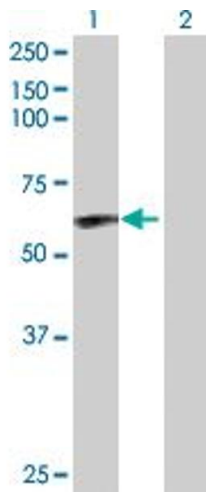
Handling

Buffer: In 1x PBS, pH 7.4

Handling Advice: Aliquot to avoid repeated freezing and thawing.

Storage: -20 °C

Storage Comment: Store at -20°C or lower. Aliquot to avoid repeated freezing and thawing.



Western Blotting

Image 1. Western Blot analysis of CAMK2D expression in transfected 293T cell line by CAMK2D MaxPab polyclonal antibody.

Lane 1: CAMK2D transfected lysate(54.10 KDa).

Lane 2: Non-transfected lysate.