

Datasheet for ABIN513996

## anti-Calnexin antibody (AA 504-592)



[Go to Product page](#)

5 Images

1 Publication

### Overview

Quantity:	100 µg
Target:	Calnexin (CANX)
Binding Specificity:	AA 504-592
Reactivity:	Human
Host:	Mouse
Clonality:	Monoclonal
Conjugate:	This Calnexin antibody is un-conjugated
Application:	Western Blotting (WB), Immunofluorescence (IF), ELISA, Immunohistochemistry (Paraffin-embedded Sections) (IHC (p)), Proximity Ligation Assay (PLA)

### Product Details

Purpose:	Mouse monoclonal antibody raised against a partial recombinant CANX.
Immunogen:	CANX (NP_001737.1, 504 a.a. ~ 592 a.a) partial recombinant protein with GST tag. MW of the GST tag alone is 26 KDa.
Sequence:	SGKKQTSGME YKKTDPQPD VKEEEEKEE EKDKGDEEEE GEEKLEEKQK SDAEEDGGTV SQEEEDRKPK AEDEILNRS PRNRKPRRE
Clone:	1D4
Isotype:	IgG2b
Cross-Reactivity:	Human
Characteristics:	Antibody Reactive Against Recombinant Protein.

## Target Details

Target:	Calnexin (CANX)
Alternative Name:	CANX ( <a href="#">CANX Products</a> )
Background:	Full Gene Name: calnexin Synonyms: CNX,FLJ26570,IP90,P90
Gene ID:	821
NCBI Accession:	<a href="#">NM_001746</a>
Pathways:	<a href="#">MAPK Signaling</a> , <a href="#">Thyroid Hormone Synthesis</a>

## Application Details

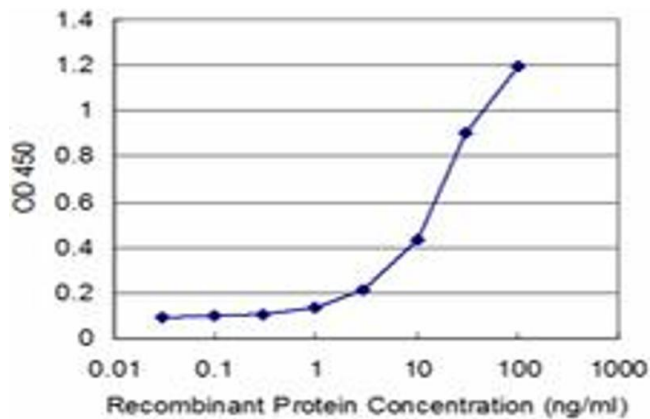
Application Notes:	Optimal working dilution should be determined by the investigator.
Restrictions:	For Research Use only

## Handling

Buffer:	In 1x PBS, pH 7.4
Handling Advice:	Aliquot to avoid repeated freezing and thawing.
Storage:	-20 °C
Storage Comment:	Store at -20°C or lower. Aliquot to avoid repeated freezing and thawing.

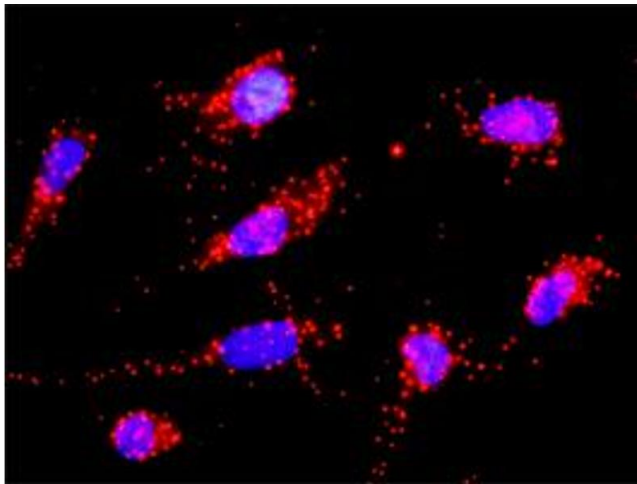
## Publications

Product cited in:	Teoh, Siu, Chan, Schlüter, Liu, Peiris, Bruzzone, Margolis, Nal: "The SARS coronavirus E protein interacts with PALS1 and alters tight junction formation and epithelial morphogenesis." in: <b>Molecular biology of the cell</b> , Vol. 21, Issue 22, pp. 3838-52, (2010) ( <a href="#">PubMed</a> ).
-------------------	--------------------------------------------------------------------------------------------------------------------------------------------------------------------------------------------------------------------------------------------------------------------------------------------------------



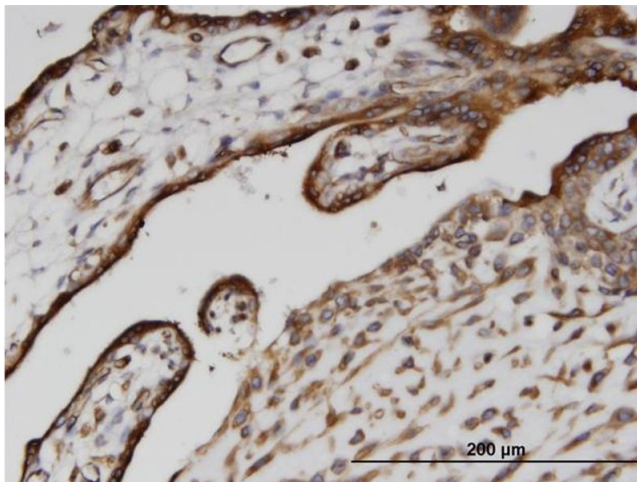
### ELISA

**Image 1.** Detection limit for recombinant GST tagged CANX is approximately 1 ng/ml as a capture antibody.



### Proximity Ligation Assay

**Image 2.** Proximity Ligation Analysis of protein-protein interactions between CD3D and CANX. HeLa cells were stained with anti-CD3D rabbit purified polyclonal 1:1200 and anti-CANX mouse monoclonal antibody 1:50. Each red dot represents the detection of protein-protein interaction complex, and nuclei were counterstained with DAPI (blue).



### Immunostaining

**Image 3.** Immunoperoxidase of monoclonal antibody to CANX on formalin-fixed paraffin-embedded human placenta. [antibody concentration 1.5 ug/ml]

Please check the [product details page](#) for more images. Overall 5 images are available for ABIN513996.