



[Go to Product page](#)

Datasheet for ABIN514000
anti-CAPNL1 antibody (AA 1-714)

3 Images

Overview

Quantity:	50 µg
Target:	CAPNL1
Binding Specificity:	AA 1-714
Reactivity:	Human
Host:	Mouse
Clonality:	Polyclonal
Conjugate:	This CAPNL1 antibody is un-conjugated
Application:	Western Blotting (WB), Immunofluorescence (IF)

Product Details

Purpose:	Mouse polyclonal antibody raised against a full-length human CAPN1 protein.
Immunogen:	CAPN1 (NP_005177.2, 1 a.a. ~ 714 a.a) full-length human protein.
Sequence:	MSEEIITPVY CTGVSAQVQK QRARELGLGR HENAIKYLQD DYEQLRVRCL QSGTLFRDEA FPPVPQSLGY KDLGPNSSKT YGIKWKRPTE LLSNPQFIVD GATRTDICQG ALGDCWLLAA IASLTLNDTL LHRVVPHGQS FQNGYAGIFH FQLWQFGEWV DVVVDDLPI KDGKLVFVHS AEGNEFWSAL LEKAYAKVNG SYEALSGGST SEGFEDFTGG VTEWYELRKA PSDLYQIILK ALERGSLLGC SIDISSVLDM EAITFKKLVK GHAYSVTGAK QVNYRGQVVS LIRMRNPWGE VEWTGAWSDS SSEWNNVDPY ERDQLRVKME DGEFWMSFRD FMREFTRLEI CNLTPDALKS RTIRKWNTTL YEGTWRRGST AGGCRNYPAT FWNVPQFKIR LDETDDPDDY GDRESGCSFV LALMQKHRRR ERRFGRDMET IGFAYVEVPP ELVGQPAVHL KRDFFLANAS RARSEQFINL REVSTRFRLP PGEYVVVPSF FEPNKEGDFV LRFSEKSAG TVELDDQIQA NLPDEQVLSE EEIDENFKAL FRQLAGEDME ISVKELRTIL NRIISKHKDL RTKGFSLESC RSMVNLMDRD

Product Details

GNGKLG LVEF NILWNRIRNY LSIFRKFDLD KSGSMSAYEM RMAIESAGFK LNKKLYELII
TRYSEPD LAV DFDNFVCCLV RLETMFRFFK TLDTDL DGVV TFDLFKWLQL TMFA

Cross-Reactivity: Human

Characteristics: Antibody reactive against mammalian transfected lysate.

Target Details

Target: CAPNL1

Alternative Name: CAPN1 ([CAPNL1 Products](#))

Background: Full Gene Name: calpain 1, (mu/l) large subunit
Synonyms: CANP,CANP1,CANPL1,muCANP,muCL

Gene ID: 823

NCBI Accession: [NM_005186](#)

Pathways: [Apoptosis](#)

Application Details

Application Notes: Optimal working dilution should be determined by the investigator.

Restrictions: For Research Use only

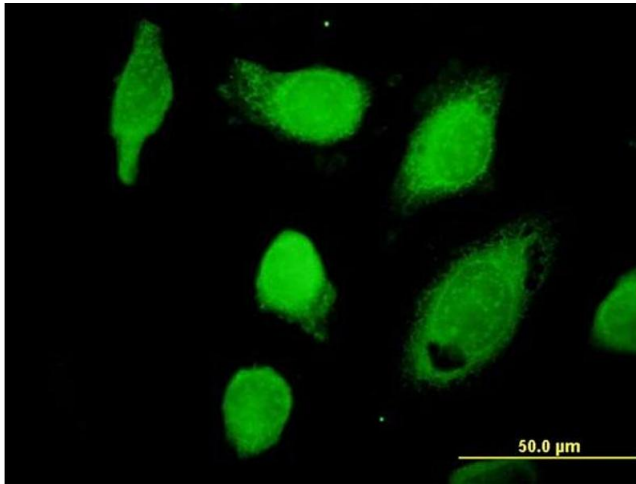
Handling

Buffer: In 1x PBS, pH 7.4

Handling Advice: Aliquot to avoid repeated freezing and thawing.

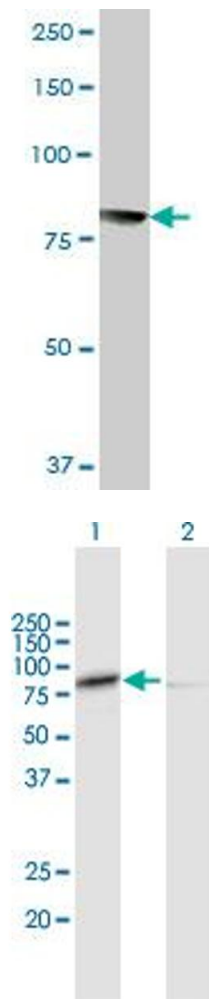
Storage: -20 °C

Storage Comment: Store at -20°C or lower. Aliquot to avoid repeated freezing and thawing.



Immunofluorescence

Image 1. Immunofluorescence of purified MaxPab antibody to CAPN1 on HeLa cell. [antibody concentration 10 ug/ml]



Western Blotting

Image 2. CAPN1 MaxPab polyclonal antibody. Western Blot analysis of CAPN1 expression in human liver.

Western Blotting

Image 3. Western Blot analysis of CAPN1 expression in transfected 293T cell line by CAPN1 MaxPab polyclonal antibody.

Lane 1: CAPN1 transfected lysate(78.54 KDa).

Lane 2: Non-transfected lysate.