

Datasheet for ABIN514001
anti-CAPNL1 antibody (AA 1-714)



[Go to Product page](#)

3 Images

Overview

Quantity:	100 µg
Target:	CAPNL1
Binding Specificity:	AA 1-714
Reactivity:	Human
Host:	Rabbit
Clonality:	Polyclonal
Conjugate:	This CAPNL1 antibody is un-conjugated
Application:	Western Blotting (WB), Immunofluorescence (IF), Proximity Ligation Assay (PLA)

Product Details

Purpose:	Rabbit polyclonal antibody raised against a full-length human CAPN1 protein.
Immunogen:	CAPN1 (NP_005177.2, 1 a.a. ~ 714 a.a) full-length human protein.
Sequence:	MSEIITPVY CTGVSQVQK QRARELGLGR HENAIKYLQD DYEQLRVRCL QSGTLFRDEA FPPVPQSLGY KDLGPNSSKT YGIKWKRPTE LLSNPQFIVD GATRTDICQG ALGDCWLLAA IASLTLNDTL LHRVVPHGQS FQNGYAGIFH FQLWQFGEWV DVVVDDLPI KDGKLVFVHS AEGNEFWSAL LEKAYAKVNG SYEALSGGST SEGFEDFTGG VTEWYELRKA PSDLYQIILK ALERGSLLGC SIDISSVLDM EAITFKKLVK GHAYSVTGAK QVNYRGQVVS LIRMRNPWGE VEWTGAWSDS SSEWNNVDPY ERDQLRVKME DGEFWMSFRD FMREFTRLEI CNLTPDALKS RTIRKWNTTL YEGTWRRGST AGGCRNYPAT FWNVPQFKIR LDETDDPDDY GDRESGCSFV LALMQKHRRR ERRFGRDMET IGFAYVEVPP ELVGQPAVHL KRDFFLANAS RARSEQFINL REVSTRFRLP PGEYVVVPSF FEPNKEGDFV LRFSEKSAG TVELDDQIQA NLPDEQVLSE EEIDENFKAL FRQLAGEDME ISVKELRTIL NRIISKHKDL RTKGFSLESC RSMVNLMDRD

Product Details

GNGKLG LVEF NILWNRIRNY LSIFRKFDLD KSGSMSAYEM RMAIESAGFK LNKKLYELII
TRYSEPD LAV DFDNFVCCLV RLETMFRFFK TLDTDLG VV TFDLFKWLQL TMFA

Cross-Reactivity: Human

Characteristics: Antibody reactive against mammalian transfected lysate.

Target Details

Target: CAPNL1

Alternative Name: CAPN1 ([CAPNL1 Products](#))

Background: Full Gene Name: calpain 1, (mu/l) large subunit
Synonyms: CANP,CANP1,CANPL1,muCANP,muCL

Gene ID: 823

NCBI Accession: [NM_005186](#)

Pathways: [Apoptosis](#)

Application Details

Application Notes: Optimal working dilution should be determined by the investigator.

Restrictions: For Research Use only

Handling

Buffer: In 1x PBS, pH 7.4

Handling Advice: Aliquot to avoid repeated freezing and thawing.

Storage: -20 °C

Storage Comment: Store at -20°C or lower. Aliquot to avoid repeated freezing and thawing.

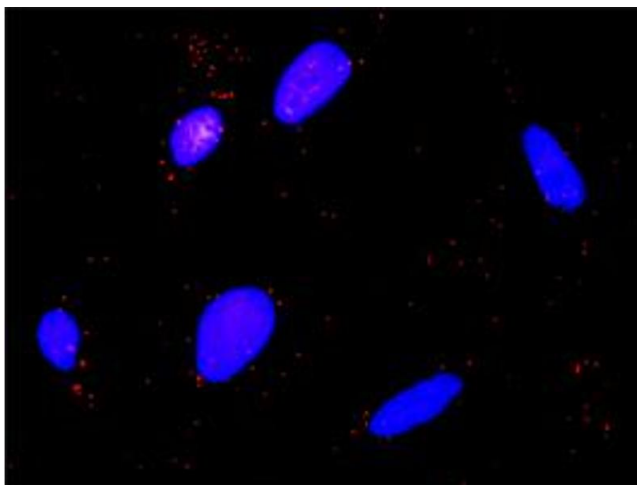


Western Blotting

Image 1. Western Blot analysis of CAPN1 expression in transfected 293T cell line by CAPN1 MaxPab polyclonal antibody.

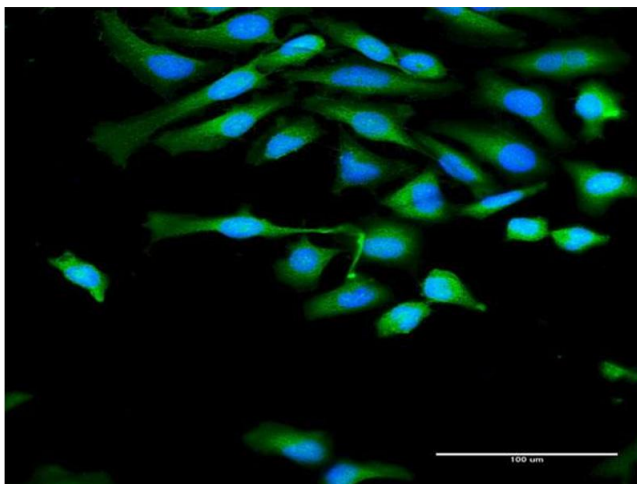
Lane 1: CAPN1 transfected lysate(81.90 KDa).

Lane 2: Non-transfected lysate.



Proximity Ligation Assay

Image 2. Proximity Ligation Analysis of protein-protein interactions between CAPN1 and F2R. HeLa cells were stained with anti-CAPN1 rabbit purified polyclonal 1:1200 and anti-F2R mouse monoclonal antibody 1:50. Each red dot represents the detection of protein-protein interaction complex, and nuclei were counterstained with DAPI (blue).



Immunofluorescence

Image 3. Immunofluorescence of purified MaxPab antibody to CAPN1 on HeLa cell. [antibody concentration 30 ug/ml]