

Datasheet for ABIN514012
anti-Calpastatin antibody (AA 1-686)



[Go to Product page](#)

1 Image

Overview

Quantity:	100 µg
Target:	Calpastatin (CAST)
Binding Specificity:	AA 1-686
Reactivity:	Human
Host:	Rabbit
Clonality:	Polyclonal
Conjugate:	This Calpastatin antibody is un-conjugated
Application:	Western Blotting (WB)

Product Details

Purpose:	Rabbit polyclonal antibody raised against a full-length human CAST protein.
Immunogen:	CAST (NP_775083.1, 1 a.a. ~ 686 a.a) full-length human protein.
Sequence:	MNPTETKAVK TEPEKKSQST KLSVVHEKKS QEGKPKEHTE PKSLPKQASD TGSNDAHNNK AVSRSAEQQP SEKSTEPKTK PQDMISAGGE SVAGITAISG KPGDKKKEKK SLTPAVPVES KPKDPSGKSG MDAALDDLID TLGGPEETEE ENTTYTGPEV SDPMSSTYIE ELGKREVTIP PKYRELLAKK EGITGPPADS SKPIGPDDAI DALSSDFTCG SPTAAGKKTE KEESTEVLKA QSAGTVRSAA PPQEKKRKVE KDTMSDQALE ALSASLGTRQ AEPDLRSI KEVDEAKAKE EKLEKCGEDD ETIPSEYRLK PATDKDGKPL LPEPEEKPKP RSESELIDEL SEDFDRSECK EKPSKPTTEK EESKAAAPAP VSEAVCRTSM CSIQSAPPEP ATLKGTVPDD AVEALADSLG KKEADPEDGK PVMDKVKEKA KEEDREKLGE KEETIPPDYR LEEVKDKDGK PLLPKESKEQ LPPMSEDFLL DALSEDFSGP QNASSLK FED AKLAAAISEV VSQTPASTTQ AGAPPRDTSQ SDKDLDDALD KLSDSLQGRQ PDPDENK PME DKVKEKAKAE HRDKLGERDD TIPPEYRHLL

Product Details

DDNGQDKPVK PPTKKSEDSK KPADDQDPID ALSGDLDSKP STTETSQNTA KDKCKKAASS
SKAPKNGGKA KDSAKTTEET SKPKDD

Cross-Reactivity: Human

Characteristics: Antibody reactive against mammalian transfected lysate.

Target Details

Target: Calpastatin (CAST)

Alternative Name: CAST ([CAST Products](#))

Background: Full Gene Name: calpastatin
Synonyms: BS-17,MGC9402

Gene ID: 831

NCBI Accession: [NM_173060](#)

Application Details

Application Notes: Optimal working dilution should be determined by the investigator.

Restrictions: For Research Use only

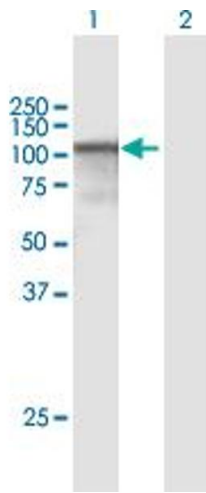
Handling

Buffer: In 1x PBS, pH 7.4

Handling Advice: Aliquot to avoid repeated freezing and thawing.

Storage: -20 °C

Storage Comment: Store at -20°C or lower. Aliquot to avoid repeated freezing and thawing.



Western Blotting

Image 1. Western Blot analysis of CAST expression in transfected 293T cell line by CAST MaxPab polyclonal antibody.

Lane 1: CAST transfected lysate(74.10 KDa).

Lane 2: Non-transfected lysate.