



[Go to Product page](#)

Datasheet for ABIN514071
anti-CBL antibody (AA 1-906)

4 Images

Overview

Quantity:	100 µg
Target:	CBL
Binding Specificity:	AA 1-906
Reactivity:	Human
Host:	Rabbit
Clonality:	Polyclonal
Conjugate:	This CBL antibody is un-conjugated
Application:	Western Blotting (WB), Proximity Ligation Assay (PLA)

Product Details

Purpose:	Rabbit polyclonal antibody raised against a full-length human CBL protein.
Immunogen:	CBL (NP_005179.2, 1 a.a. ~ 906 a.a) full-length human protein.
Sequence:	MAGNVKKSSG AGGGSGSGGS GSGGLIGLMK DAFQPHHHHH HHLSPHPPGT VDKKMVEKCW KLMDKVRLC QNPKLALKNS PPYILDLLPD TYQHLRTILS RYEGKMETLG ENEYFRVFME NLMKKTKQTI SLFKEGKERM YEENSQPRRN LTKLSLIFSH MLAELKGIFP SGLFQGDTFR ITKADAAEFW RKAFGKTIW PWKSFRQALH EVHPISGLE AMALKSTIDL TCNDYISVFE FDIFTRLFQP WSSLLRNWNS LAVTHPGYMA FLTYDEVKAR LQKFIHKPGS YIFRLSCTRL GQWAIGYVTA DGNILQTIPH NKPLFQALID GFREGFYLP DGRNQNPDLT GLCEPTQDH IKVTQEYEL YCEMGSTFQL CKICAENDKD VKIEPCGHLM CTSLTSWQE SEGQGCPCFCR CEIKGTEPIV VDPFDPRGSG SLLRQGAEGA PSPNYDDDDD ERADDTLFMM KELAGAKVER PPSPFSMAPQ ASLPPVPPRL DLLPQRVCVP SSASALGTAS KAASGSLHKD KPLVPPTLR DLPPPPPPDR PYSVGAESRP QRRPLPCTPG DCPSRDKLPP VPSSRLGDSW LPRPIKVPV

Product Details

SAPSSSDPWT GRELTNRHSL PFSLPSQMEP RPDVPRLGST FSLDTSMSMN SSPLVGPECD
HPKIKPSSSA NAIYSLAARP LPVPKLPPGE QCEGEEDTEY MTPSSRPLRP LDTSQSSRAC
DCDQQIDSCT YEAMYNISQSQ APSITESSTF GEGNLAAAHA NTGPPEESENE DDGYDVPKPP
VPAVLARRTL SDISNASSSF GWLSLDGDPT TNVTEGSQVP ERPPKPFPRR INSERTKAGSC
QQGSGPAASA ATASPQLSSE IENLMSQGYS YQDIQKALVI AQNNIEMAKN ILREFVSISS PAHVAT

Cross-Reactivity: Human, Mouse

Characteristics: Antibody reactive against mammalian transfected lysate.

Target Details

Target: CBL

Alternative Name: CBL ([CBL Products](#))

Background: Full Gene Name: Cas-Br-M (murine) ecotropic retroviral transforming sequence
Synonyms: C-CBL,CBL2,RNF55

Gene ID: 867

NCBI Accession: [NM_005188](#)

Pathways: [TCR Signaling](#), [Interferon-gamma Pathway](#), [EGFR Signaling Pathway](#), [EGFR Downregulation](#),
[VEGFR1 Specific Signals](#)

Application Details

Application Notes: Optimal working dilution should be determined by the investigator.

Restrictions: For Research Use only

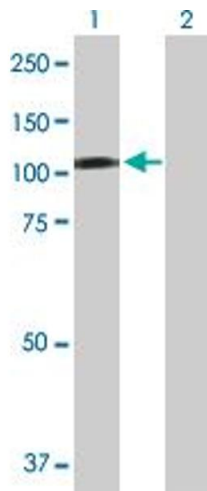
Handling

Buffer: In 1x PBS, pH 7.4

Handling Advice: Aliquot to avoid repeated freezing and thawing.

Storage: -20 °C

Storage Comment: Store at -20°C or lower. Aliquot to avoid repeated freezing and thawing.

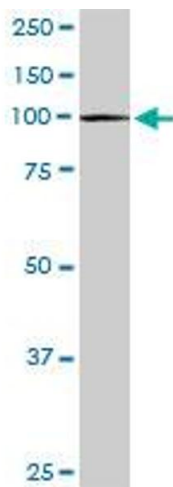


Western Blotting

Image 1. Western Blot analysis of CBL expression in transfected 293T cell line by CBL MaxPab polyclonal antibody.

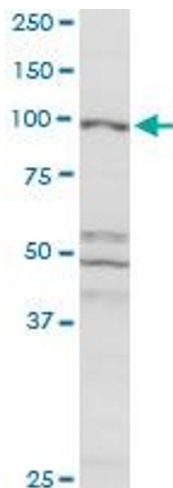
Lane 1: CBL transfected lysate(99.60 KDa).

Lane 2: Non-transfected lysate.



Western Blotting

Image 2. CBL MaxPab rabbit polyclonal antibody. Western Blot analysis of CBL expression in mouse spleen.



Western Blotting

Image 3. CBL MaxPab rabbit polyclonal antibody. Western Blot analysis of CBL expression in MCF-7.

Please check the [product details page](#) for more images. Overall 4 images are available for ABIN514071.