

Datasheet for ABIN514085
anti-CBS antibody (AA 1-551)



[Go to Product page](#)

3 Images

2 Publications

Overview

Quantity:	100 µg
Target:	CBS
Binding Specificity:	AA 1-551
Reactivity:	Human
Host:	Rabbit
Clonality:	Polyclonal
Conjugate:	This CBS antibody is un-conjugated
Application:	Western Blotting (WB)

Product Details

Purpose:	Rabbit polyclonal antibody raised against a full-length human CBS protein.
Immunogen:	CBS (NP_000062.1, 1 a.a. ~ 551 a.a) full-length human protein.
Sequence:	MPSETPQAEV GPTGCPHRSG PHSAKGSLEK GSPEDKEAKE PLWIRPDAPS RCTWQLGRPA SESPHHHTAP AKSPKILPDI LKKIGDTPMV RINKIGKKFG LKCELLAKCE FFNAGGSVKD RISLRMIEDA ERDGLTKPGD TIIPTSGNT GIGLALAAAV RGYRCIIVMP EKMSSEKVDV LRALGAEIVR TPTNARFDSP ESHVGVAVRL KNEIPNSHIL DQYRNASNPL AHYDTTAEI LQQCDGKLDL LVA SVGTGGT ITGIARKLKE KCPGCRIGV DPEGSILAEP EELNQTEQTT YEVEGIGYDF IPTVLDRTVV DKWFKSNDEE AFTFARMLIA QEGLLCGSA GSTVAVAVKA AQELQEQRC VVILPDSVRN YMTKFLSDRW MLQKGFLEKE DLTEKKPWWW HLRVQELGLS APLTVLPTIT CGHTIEILRE KGFDQAPVVD EAGVILGMVT LGNMLSSLLA GKVQPSDQVG KVIYKQFKQI RLTDTLGRLS HILEMDHFAL VVHEQIQYHS TGKSSQRQMV FGVVTAIDLL NFVAAQERDQ K

Product Details

Cross-Reactivity:	Human, Mouse
Characteristics:	Antibody reactive against mammalian transfected lysate.

Target Details

Target:	CBS
Alternative Name:	CBS (CBS Products)
Background:	Full Gene Name: cystathionine-beta-synthase Synonyms: HIP4
Gene ID:	875
NCBI Accession:	NM_000071

Application Details

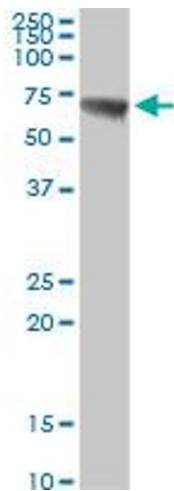
Application Notes:	Optimal working dilution should be determined by the investigator.
Restrictions:	For Research Use only

Handling

Buffer:	In 1x PBS, pH 7.4
Handling Advice:	Aliquot to avoid repeated freezing and thawing.
Storage:	-20 °C
Storage Comment:	Store at -20°C or lower. Aliquot to avoid repeated freezing and thawing.

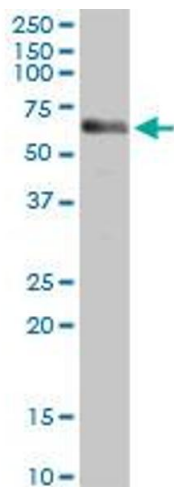
Publications

Product cited in:	Asimakopoulou, Panopoulos, Chasapis, Coletta, Zhou, Cirino, Giannis, Szabo, Spyroulias, Papapetropoulos: "Selectivity of commonly used pharmacological inhibitors for cystathionine ? synthase (CBS) and cystathionine ? lyase (CSE)." in: British journal of pharmacology , Vol. 169, Issue 4, pp. 922-32, (2013) (PubMed).
	Qi, Zhou, Xiao, Tao, Gu, Jiang, Xu: "Promoter demethylation of cystathionine-?-synthetase gene contributes to inflammatory pain in rats." in: Pain , Vol. 154, Issue 1, pp. 34-45, (2012) (PubMed).



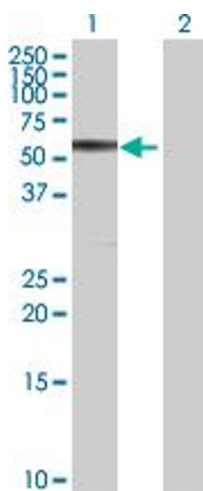
Western Blotting

Image 1. CBS MaxPab rabbit polyclonal antibody. Western Blot analysis of CBS expression in mouse kidney.



Western Blotting

Image 2. CBS MaxPab rabbit polyclonal antibody. Western Blot analysis of CBS expression in human pancreas.



Western Blotting

Image 3. Western Blot analysis of CBS expression in transfected 293T cell line by CBS MaxPab polyclonal antibody.

Lane 1: CBS transfected lysate(60.60 KDa).

Lane 2: Non-transfected lysate.