

Datasheet for ABIN514100
anti-Cyclin B1 antibody (AA 1-433)

4 Images

1 Publication

[Go to Product page](#)

Overview

Quantity:	100 µg
Target:	Cyclin B1 (CCNB1)
Binding Specificity:	AA 1-433
Reactivity:	Human
Host:	Rabbit
Clonality:	Polyclonal
Conjugate:	This Cyclin B1 antibody is un-conjugated
Application:	Western Blotting (WB), Proximity Ligation Assay (PLA)

Product Details

Purpose:	Rabbit polyclonal antibody raised against a full-length human CCNB1 protein.
Immunogen:	CCNB1 (NP_114172.1, 1 a.a. ~ 433 a.a) full-length human protein.
Sequence:	<p>MALRVTRNSK INAENKAKIN MAGAKRVPTA PAATSKPGLR PRTALGDIGN KVSEQLQAKM PMKKEAKPSA TGKVIDKKLP KPLEKVPLMV PVPVSEPVPE PEPEPEPEPV KEEKLSPEPI LVDTASPSPM ETSGCAPAEE DLCQAFSDVI LAVNDVDAED GADPNLCSEY VKDIYAYLRQ LEEEQAVRPK YLLGREVTGN MRALIDWLVL VQVMKFRLQ ETMYMTVSII DRFMQNNCVP KKMLQLVGVT AMFIASKYEE MYPPEIGDFA FVTDNTYTKH QIRQMEMKIL RALNFGGLGRP LPLHFLRRAS KIGEV DVEQH TLAKYLMELT MLDYDMVHFP PSQIAAG AFC LALKILDNGE WTPTLQHYLS YTEESLLPVM QHLAKNVVMV NQGLTKHMTV KNKYATSKHA KISTLPQLNS ALVQDLAKAV AKV</p>
Cross-Reactivity:	Human

Product Details

Characteristics: Antibody reactive against mammalian transfected lysate.

Target Details

Target: Cyclin B1 (CCNB1)

Alternative Name: CCNB1 ([CCNB1 Products](#))

Background: Full Gene Name: cyclin B1
Synonyms: CCNB

Gene ID: 891

NCBI Accession: [NM_031966](#)

Pathways: [Cell Division Cycle](#), [AMPK Signaling](#), [Mitotic G1-G1/S Phases](#), [M Phase](#)

Application Details

Application Notes: Optimal working dilution should be determined by the investigator.

Restrictions: For Research Use only

Handling

Buffer: In 1x PBS, pH 7.4

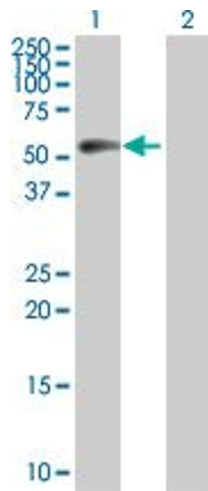
Handling Advice: Aliquot to avoid repeated freezing and thawing.

Storage: -20 °C

Storage Comment: Store at -20°C or lower. Aliquot to avoid repeated freezing and thawing.

Publications

Product cited in: Liu, Chen, Chau, Jan, Chen, Hsu, Lin, Juang, Lu, Cheng, Chen, Chang, Ting, Kao, Hsiao, Huang: "Analysis of protein-protein interactions in cross-talk pathways reveals CRKL protein as a novel prognostic marker in hepatocellular carcinoma." in: **Molecular & cellular proteomics : MCP**, Vol. 12, Issue 5, pp. 1335-49, (2013) ([PubMed](#)).

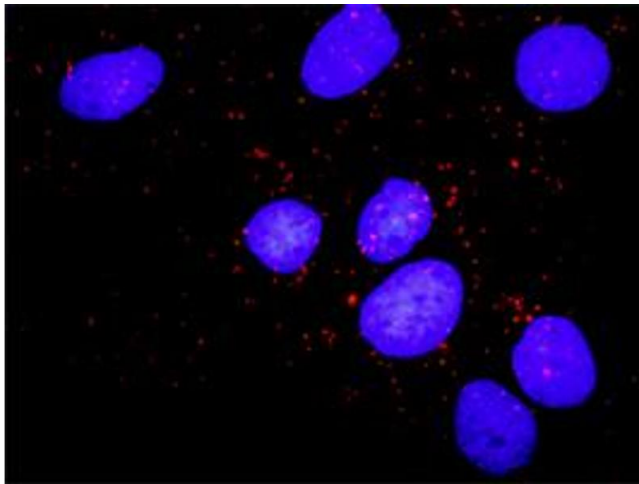


Western Blotting

Image 1. Western Blot analysis of CCNB1 expression in transfected 293T cell line by CCNB1 MaxPab polyclonal antibody.

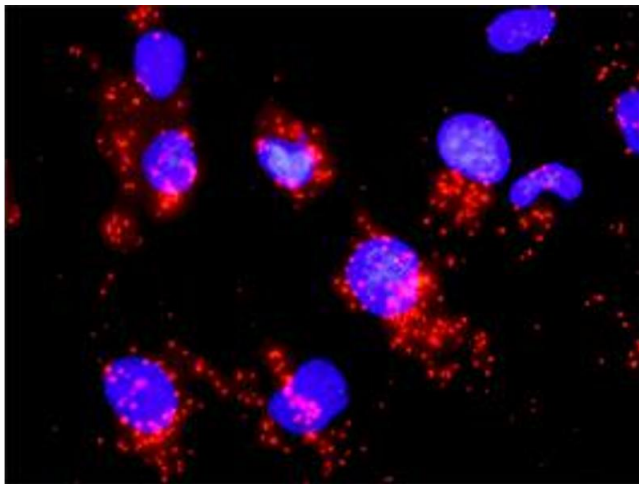
Lane 1: CCNB1 transfected lysate(48.30 KDa).

Lane 2: Non-transfected lysate.



Proximity Ligation Assay

Image 2. Proximity Ligation Analysis of protein-protein interactions between CCNB1 and PKMYT1. Huh7 cells were stained with anti-CCNB1 rabbit purified polyclonal 1:1200 and anti-PKMYT1 mouse monoclonal antibody 1:50. Each red dot represents the detection of protein-protein interaction complex, and nuclei were counterstained with DAPI (blue).



Proximity Ligation Assay

Image 3. Proximity Ligation Analysis of protein-protein interactions between CCNB1 and CDC25A. Mahlavu cells were stained with anti-CCNB1 rabbit purified polyclonal 1:1200 and anti-CDC25A mouse monoclonal antibody 1:50. Each red dot represents the detection of protein-protein interaction complex, and nuclei were counterstained with DAPI (blue).

Please check the [product details page](#) for more images. Overall 4 images are available for ABIN514100.