



[Go to Product page](#)

Datasheet for ABIN514106
anti-Cyclin D2 antibody (AA 1-289)

4 Images

Overview

Quantity:	100 µg
Target:	Cyclin D2 (CCND2)
Binding Specificity:	AA 1-289
Reactivity:	Human
Host:	Rabbit
Clonality:	Polyclonal
Conjugate:	This Cyclin D2 antibody is un-conjugated
Application:	Western Blotting (WB), Immunofluorescence (IF), Proximity Ligation Assay (PLA)

Product Details

Purpose:	Rabbit polyclonal antibody raised against a full-length human CCND2 protein.
Immunogen:	CCND2 (NP_001750.1, 1 a.a. ~ 289 a.a) full-length human protein.
Sequence:	MELLCHEVDP VRRAVRDRNL LRDDRVLQNL LTIEERYLPQ CSYFKCVQKD IQPYMRRMVA TWMLEVCEEQ KCEEEVFPLA MNYLDRFLAG VPTPKSHLQL LGAVCMFLAS KLKETSPLTA EKLCIYTDNS IKPQELLEWE LVVLGKCLKWN LAAVTPHDFI EHILRKLPQQ REKLSLIRKH AQTFIALCAT DFKFAMYPPS MIATGSVGAA ICGLQQDEEV SSLTCDALTE LLAKITNTDV DCLKACQEQI EAVLLNSLQQ YRQDQRDGSK SEDELDQAST PTDVRDIDL
Cross-Reactivity:	Human
Characteristics:	Antibody reactive against mammalian transfected lysate.

Target Details

Target:	Cyclin D2 (CCND2)
Alternative Name:	CCND2 (CCND2 Products)
Background:	Full Gene Name: cyclin D2 Synonyms: KIAK0002,MGC102758
Gene ID:	894
NCBI Accession:	NM_001759
Pathways:	Cell Division Cycle, Mitotic G1-G1/S Phases

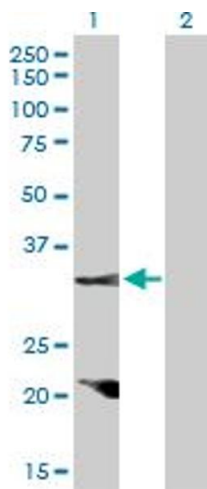
Application Details

Application Notes:	Optimal working dilution should be determined by the investigator.
Restrictions:	For Research Use only

Handling

Buffer:	In 1x PBS, pH 7.4
Handling Advice:	Aliquot to avoid repeated freezing and thawing.
Storage:	-20 °C
Storage Comment:	Store at -20°C or lower. Aliquot to avoid repeated freezing and thawing.

Images

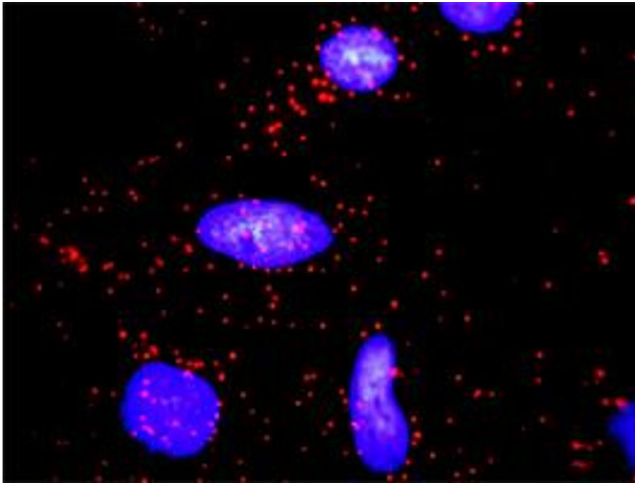


Western Blotting

Image 1. Western Blot analysis of CCND2 expression in transfected 293T cell line by CCND2 MaxPab polyclonal antibody.

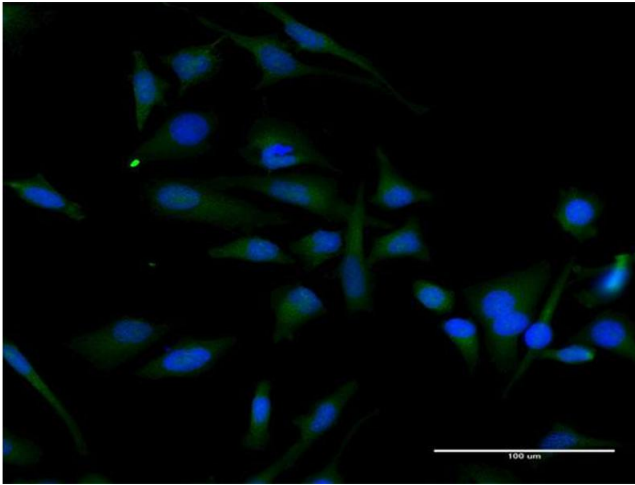
Lane 1: CCND2 transfected lysate(33.10 KDa).

Lane 2: Non-transfected lysate.



Proximity Ligation Assay

Image 2. Proximity Ligation Analysis of protein-protein interactions between CCND2 and CDKN1A. HeLa cells were stained with anti-CCND2 rabbit purified polyclonal 1:1200 and anti-CDKN1A mouse monoclonal antibody 1:50. Each red dot represents the detection of protein-protein interaction complex, and nuclei were counterstained with DAPI (blue).



Immunofluorescence

Image 3. Immunofluorescence of purified MaxPab antibody to CCND2 on HeLa cell. [antibody concentration 30 ug/ml]

Please check the [product details page](#) for more images. Overall 4 images are available for ABIN514106.