



[Go to Product page](#)

Datasheet for ABIN514110  
**anti-Cyclin E1 antibody (AA 1-410)**

3 Images

Overview

Quantity:	50 µg
Target:	Cyclin E1 (CCNE1)
Binding Specificity:	AA 1-410
Reactivity:	Human
Host:	Mouse
Clonality:	Polyclonal
Conjugate:	This Cyclin E1 antibody is un-conjugated
Application:	Western Blotting (WB), Immunofluorescence (IF)

Product Details

Purpose:	Mouse polyclonal antibody raised against a full-length human CCNE1 protein.
Immunogen:	CCNE1 (NP_001229.1, 1 a.a. ~ 410 a.a) full-length human protein.
Sequence:	MPRERRERDA KERDTMKEDG GAEFSARSRK RKANVTVFLQ DPDEEMAKID RTARDQCGSQ PWNDNAV CAD PCSLIPTPK EDDRVYPNS TCKPRIAPS RGSPLVLSW ANREEVWKIM LNKEKTYLRD QHFLEQHPLL QPKMRAILLD WLMEVCEVYK LHRETFYLAQ DFFDRYMATQ ENVVKTLLQL IGISLFI AA KLEEIYPPKL HQFAYVTDGA CSGDEILTME LMIMKALKWR LSPLTIVSWL NVYMQVAYLN DLHEVLLPQY PQQIFIQIAE LLDLCVLDVD CLEFPYGILA ASALYHFSSS ELMQKVSGYQ WCDIENCVKW MVPFAMVIRE TGSSKCLKHFR GVADEDAHNI QTHRDSL DLL DKARAKKAML SEQNRASPLP SGLLTPPQSG KKQSSGPEMA
Cross-Reactivity:	Human
Characteristics:	Antibody reactive against mammalian transfected lysate.

## Target Details

Target: Cyclin E1 (CCNE1)

Alternative Name: CCNE1 ([CCNE1 Products](#))

Background: Full Gene Name: cyclin E1  
Synonyms: CCNE

Gene ID: 898

NCBI Accession: [NM\\_001238](#)

Pathways: [Cell Division Cycle](#), [Intracellular Steroid Hormone Receptor Signaling Pathway](#), [Nuclear Hormone Receptor Binding](#), [Mitotic G1-G1/S Phases](#)

## Application Details

Application Notes: Optimal working dilution should be determined by the investigator.

Restrictions: For Research Use only

## Handling

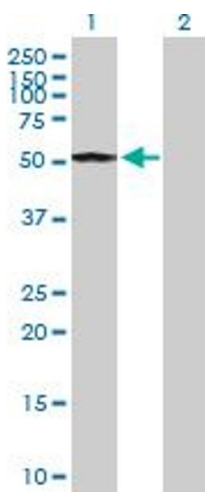
Buffer: In 1x PBS, pH 7.4

Handling Advice: Aliquot to avoid repeated freezing and thawing.

Storage: -20 °C

Storage Comment: Store at -20°C or lower. Aliquot to avoid repeated freezing and thawing.

## Images

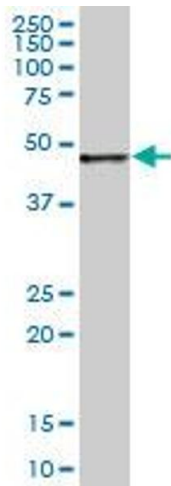


### Western Blotting

**Image 1.** Western Blot analysis of CCNE1 expression in transfected 293T cell line by CCNE1 MaxPab polyclonal antibody.

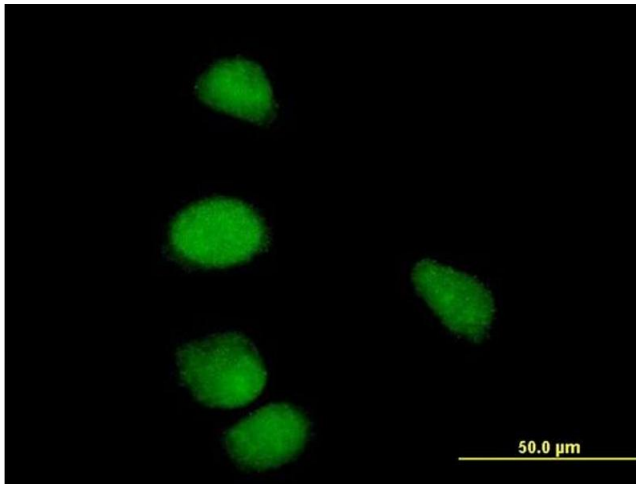
Lane 1: CCNE1 transfected lysate(45.1 kDa).

Lane 2: Non-transfected lysate.



### Western Blotting

**Image 2.** CCNE1 MaxPab polyclonal antibody. Western Blot analysis of CCNE1 expression in human colon.



### Immunofluorescence

**Image 3.** Immunofluorescence of purified MaxPab antibody to CCNE1 on HeLa cell. [antibody concentration 10 ug/ml]