

Datasheet for ABIN514111
anti-Cyclin E1 antibody (AA 1-410)



[Go to Product page](#)

4 Images

Overview

Quantity:	100 µg
Target:	Cyclin E1 (CCNE1)
Binding Specificity:	AA 1-410
Reactivity:	Human
Host:	Rabbit
Clonality:	Polyclonal
Conjugate:	This Cyclin E1 antibody is un-conjugated
Application:	Western Blotting (WB), Proximity Ligation Assay (PLA)

Product Details

Purpose:	Rabbit polyclonal antibody raised against a full-length human CCNE1 protein.
Immunogen:	CCNE1 (NP_001229.1, 1 a.a. ~ 410 a.a) full-length human protein.
Sequence:	MPRERRERDA KERDTMKEDG GAEFSARSRK RKANVTVFLQ DPDEEMAKID RTARDQCGSQ PWDNNAVCAD PCSLIPTPK EDDRVYPNS TCKPRIAPS RGSPLVLSW ANREEVWKIM LNKEKTYLRD QHFLEQHPLL QPKMRAILLD WLMEVCEVYK LHRETFYLAQ DFFDRYMATQ ENVVKTLLQL IGISLFIAA KLEEIYPPKL HQFAYVTDGA CSGDEILTME LMIMKALKWR LSPLTIVSWL NVYMQVAYLN DLHEVLLPQY PQQIFIQIAE LLDLCVLDVD CLEFPYGILA ASALYHFSSS ELMQKVSGYQ WCDIENCVKW MVPFAMVIRE TGSSKCLKHFR GVADEDAHNI QTHRDSL DLL DKARAKKAML SEQNRASPLP SGLLTPPQSG KKQSSGPEMA
Cross-Reactivity:	Human, Mouse
Characteristics:	Antibody reactive against mammalian transfected lysate.

Target Details

Target:	Cyclin E1 (CCNE1)
Alternative Name:	CCNE1 (CCNE1 Products)
Background:	Full Gene Name: cyclin E1 Synonyms: CCNE
Gene ID:	898
NCBI Accession:	NM_001238
Pathways:	Cell Division Cycle , Intracellular Steroid Hormone Receptor Signaling Pathway , Nuclear Hormone Receptor Binding , Mitotic G1-G1/S Phases

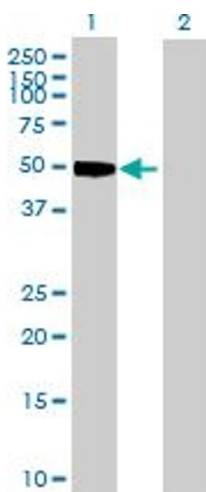
Application Details

Application Notes:	Optimal working dilution should be determined by the investigator.
Restrictions:	For Research Use only

Handling

Buffer:	In 1x PBS, pH 7.4
Handling Advice:	Aliquot to avoid repeated freezing and thawing.
Storage:	-20 °C
Storage Comment:	Store at -20°C or lower. Aliquot to avoid repeated freezing and thawing.

Images

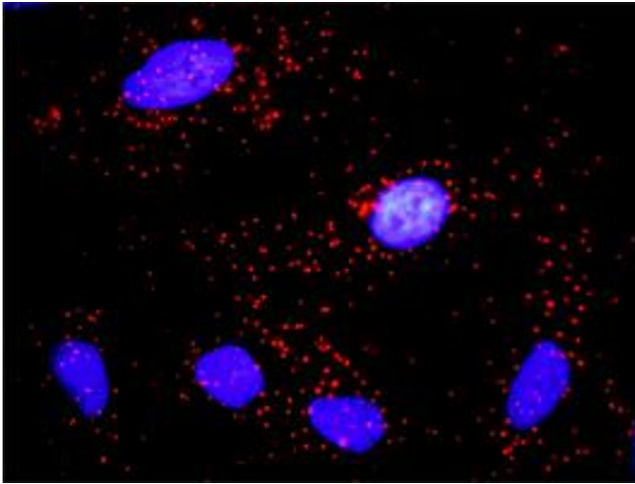


Western Blotting

Image 1. Western Blot analysis of CCNE1 expression in transfected 293T cell line by CCNE1 MaxPab polyclonal antibody.

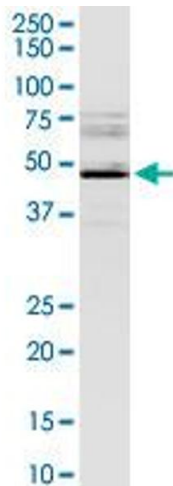
Lane 1: CCNE1 transfected lysate(47.10 KDa).

Lane 2: Non-transfected lysate.



Proximity Ligation Assay

Image 2. Proximity Ligation Analysis of protein-protein interactions between CCNE1 and CDKN1A. HeLa cells were stained with anti-CCNE1 rabbit purified polyclonal 1:1200 and anti-CDKN1A mouse monoclonal antibody 1:50. Each red dot represents the detection of protein-protein interaction complex, and nuclei were counterstained with DAPI (blue).



Western Blotting

Image 3. CCNE1 MaxPab rabbit polyclonal antibody. Western Blot analysis of CCNE1 expression in Jurkat.

Please check the [product details page](#) for more images. Overall 4 images are available for ABIN514111.