

Datasheet for ABIN514132
anti-CD3D antibody (AA 1-171)

3 Images

[Go to Product page](#)

Overview

Quantity:	100 µg
Target:	CD3D
Binding Specificity:	AA 1-171
Reactivity:	Human
Host:	Rabbit
Clonality:	Polyclonal
Conjugate:	This CD3D antibody is un-conjugated
Application:	Western Blotting (WB), Proximity Ligation Assay (PLA)

Product Details

Purpose:	Rabbit polyclonal antibody raised against a full-length human CD3D protein.
Immunogen:	CD3D (NP_000723.1, 1 a.a. ~ 171 a.a) full-length human protein.
Sequence:	MEHSTFLSGL VLATLLSQVS PFKIPIEELE DRVFVNCNTS ITWVEGT VGT LLSDITRLDL GKRILDPRGI YRCNGTDIYK DKESTVQVHY RMCQSCVELD PATVAGIIVT DVIATLLLAL GVFCFAGHET GRLSGAADTQ ALLRNDQVYQ PLRDRDDAQY SHLGGNWARN K
Cross-Reactivity:	Human, Mouse
Characteristics:	Antibody reactive against mammalian transfected lysate.

Target Details

Target:	CD3D
---------	------

Target Details

Alternative Name:	CD3D (CD3D Products)
Background:	Full Gene Name: CD3d molecule, delta (CD3-TCR complex) Synonyms: CD3-DELTA,T3D
Gene ID:	915
NCBI Accession:	NM_000732
Pathways:	TCR Signaling , CXCR4-mediated Signaling Events

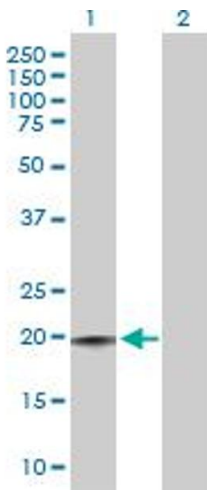
Application Details

Application Notes:	Optimal working dilution should be determined by the investigator.
Restrictions:	For Research Use only

Handling

Buffer:	In 1x PBS, pH 7.4
Handling Advice:	Aliquot to avoid repeated freezing and thawing.
Storage:	-20 °C
Storage Comment:	Store at -20°C or lower. Aliquot to avoid repeated freezing and thawing.

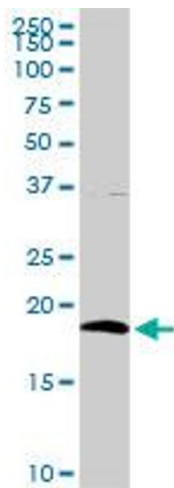
Images



Western Blotting

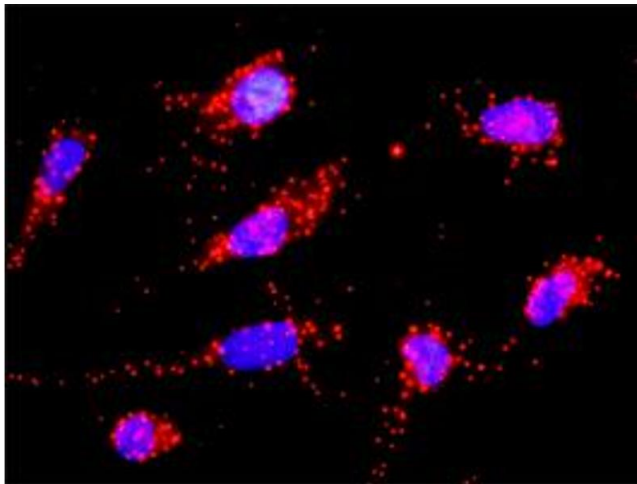
Image 1. Western Blot analysis of CD3D expression in transfected 293T cell line by CD3D MaxPab polyclonal antibody.

Lane 1: CD3D transfected lysate(18.90 kDa).
Lane 2: Non-transfected lysate.



Western Blotting

Image 2. CD3D MaxPab rabbit polyclonal antibody. Western Blot analysis of CD3D expression in mouse kidney.



Proximity Ligation Assay

Image 3. Proximity Ligation Analysis of protein-protein interactions between CD3D and CANX. HeLa cells were stained with anti-CD3D rabbit purified polyclonal 1:1200 and anti-CANX mouse monoclonal antibody 1:50. Each red dot represents the detection of protein-protein interaction complex, and nuclei were counterstained with DAPI (blue).