



[Go to Product page](#)

Datasheet for ABIN514147
anti-CD8 alpha antibody (AA 1-235)

3 Images

Overview

Quantity:	100 µg
Target:	CD8 alpha (CD8A)
Binding Specificity:	AA 1-235
Reactivity:	Human
Host:	Mouse
Clonality:	Monoclonal
Conjugate:	This CD8 alpha antibody is un-conjugated
Application:	Immunoprecipitation (IP), Immunofluorescence (IF), ELISA

Product Details

Purpose:	Mouse monoclonal antibody raised against a full-length recombinant CD8A.
Immunogen:	CD8A (AAH25715, 1 a.a. ~ 235 a.a) full-length recombinant protein with GST tag. MW of the GST tag alone is 26 KDa.
Sequence:	MALPVTALLL PLALLLHAAR PSQFRVSPLD RTWNLGETVE LKCQVLLSNP TSGCSWLFQP RGAASPTFL LYLSQNKPKA AEGLDTRFS GKRLGDTFVL TLSDFRRENE GCYFCSALSN SIMYFSHFVP VFLPAKPTTT PPRPPTPAP TIASQPLSLR PEACRPAAGG AVHTRGLDFA CDIYWAPLA GTCGVLLLSL VITLYCNHRN RRRVCKCPRP VVKSGDKPSL SARYV
Clone:	4B9
Isotype:	IgG2b
Cross-Reactivity:	Human

Product Details

Characteristics: Antibody Reactive Against Recombinant Protein.

Target Details

Target: CD8 alpha (CD8A)

Alternative Name: CD8A ([CD8A Products](#))

Background: Full Gene Name: CD8a molecule
Synonyms: CD8,Leu2,MAL,p32

Gene ID: 925

Pathways: [TCR Signaling](#)

Application Details

Application Notes: Optimal working dilution should be determined by the investigator.

Restrictions: For Research Use only

Handling

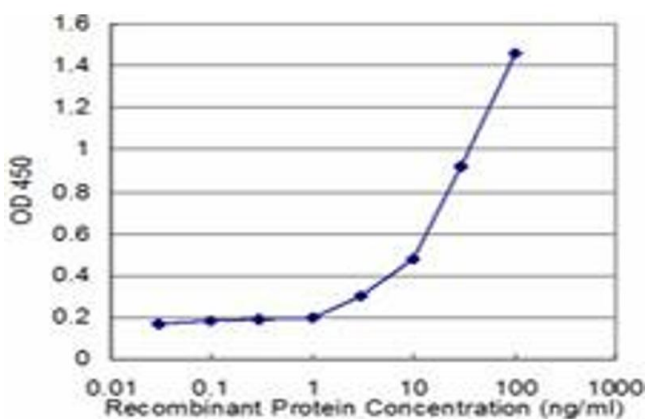
Buffer: In 1x PBS, pH 7.4

Handling Advice: Aliquot to avoid repeated freezing and thawing.

Storage: -20 °C

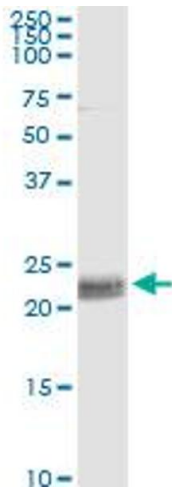
Storage Comment: Store at -20°C or lower. Aliquot to avoid repeated freezing and thawing.

Images



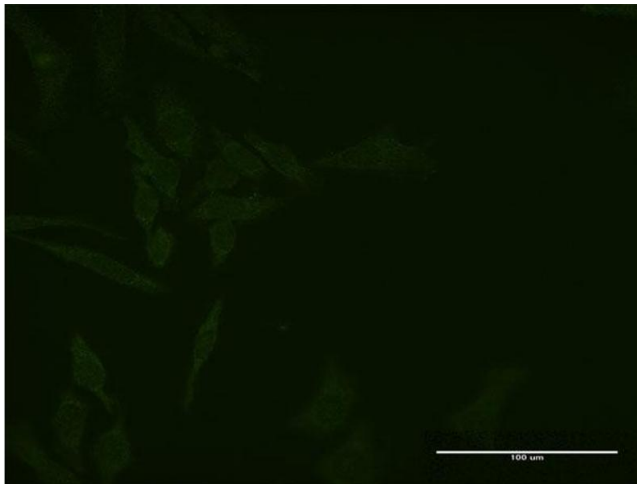
ELISA

Image 1. Detection limit for recombinant GST tagged CD8A is approximately 3ng/ml as a capture antibody.



Immunoprecipitation

Image 2. Immunoprecipitation of CD8A transfected lysate using anti-CD8A monoclonal antibody and Protein A Magnetic Bead, and immunoblotted with CD8A MaxPab rabbit polyclonal antibody.



Immunofluorescence

Image 3. Immunofluorescence of monoclonal antibody to CD8A on HeLa cell. [antibody concentration 40 μg/ml]