



Datasheet for ABIN514192  
**anti-CD39 antibody (AA 1-510)**



[Go to Product page](#)

1 Image

Overview

Quantity:	50 µg
Target:	CD39 (ENTPD1)
Binding Specificity:	AA 1-510
Reactivity:	Human
Host:	Mouse
Clonality:	Polyclonal
Conjugate:	This CD39 antibody is un-conjugated
Application:	Western Blotting (WB)

Product Details

Purpose:	Mouse polyclonal antibody raised against a full-length human ENTPD1 protein.
Immunogen:	ENTPD1 (NP_001767.3, 1 a.a. ~ 510 a.a) full-length human protein.
Sequence:	MEDTKESNVK TFCSKNILAI LGFSSIIAVI ALLAVGLTQN KALPENVKYG IVLDAGSSHT SLYIYKWPAE KENDTGVVHQ VEECRVKGPG ISKFVQKVNE IGIYLTDCME RAREVIPRSQ HQETPVYLGA TAGMRLLRME SEELADRVLV VVERSLSNYP FDFQGARIIT GQEEGAYGWI TINYLLGKFS QKTRWFSIVP YETNNQETFG ALDLGGASTQ VTFVPQNQTI ESPDNALQFR LYGKDYNVYT HSFLCYGKDQ ALWQKLA KDI QVASNEILRD PCFHGPKYKV VNVSDLYKTP CTKRFEMTLP FQQFEIQGIG NYQQCHQSIL ELFNTSYCPY SQCAFNGIFL PPLQGDFGAF SAFYFVMKFL NLTSEKVSQE KVTEMMKKFC AQPWEEIKTS YAGVKEKYL S EYCFSGTYIL SLLLQGYHFT ADSWEHIHFI GKIQGS DAGW TLGYMLNLTN MIPAEQPLST PLSHSTYVFL MVLFSVLVFT VAIIGLLIFH KPSYFWKDMV

## Product Details

---

Cross-Reactivity:	Human
Characteristics:	Antibody reactive against mammalian transfected lysate.

## Target Details

---

Target:	CD39 (ENTPD1)
Alternative Name:	ENTPD1 ( <a href="#">ENTPD1 Products</a> )
Background:	Full Gene Name: ectonucleoside triphosphate diphosphohydrolase 1 Synonyms: ATPDase,CD39,DKFZp686D194,DKFZp686I093,FLJ40921,FLJ40959,NTPDase-1
Gene ID:	953
NCBI Accession:	<a href="#">NM_001776</a>

## Application Details

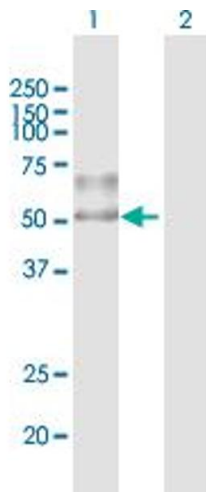
---

Application Notes:	Optimal working dilution should be determined by the investigator.
Restrictions:	For Research Use only

## Handling

---

Buffer:	In 1x PBS, pH 7.4
Handling Advice:	Aliquot to avoid repeated freezing and thawing.
Storage:	-20 °C
Storage Comment:	Store at -20°C or lower. Aliquot to avoid repeated freezing and thawing.



### Western Blotting

**Image 1.** Western Blot analysis of ENTPD1 expression in transfected 293T cell line by ENTPD1 MaxPab polyclonal antibody.

Lane 1: ENTPD1 transfected lysate(56.1 KDa).

Lane 2: Non-transfected lysate.