



[Go to Product page](#)

Datasheet for ABIN514218  
**anti-CD59 antibody (AA 1-128)**

3 Images

Overview

Quantity:	100 µg
Target:	CD59
Binding Specificity:	AA 1-128
Reactivity:	Human
Host:	Rabbit
Clonality:	Polyclonal
Conjugate:	This CD59 antibody is un-conjugated
Application:	Western Blotting (WB), Immunofluorescence (IF)

Product Details

Purpose:	Rabbit polyclonal antibody raised against a full-length human CD59 protein.
Immunogen:	CD59 (NP_000602.1, 1 a.a. ~ 128 a.a) full-length human protein.
Sequence:	MGIQGGSVLF GLLLVLAVFC HSGHSLQCYN CPNPTADCKT AVNCSSDFDA CLITKAGLQV YNKCWKF EHC NFNDVTTRLR ENELTYYCCK KDLCNFNEQL ENGGTSLSEK TVLLLVTPFL AAAWSLHP
Cross-Reactivity:	Human
Characteristics:	Antibody reactive against mammalian transfected lysate.

Target Details

Target:	CD59
---------	------

## Target Details

Alternative Name: CD59 ([CD59 Products](#))

Background: Full Gene Name: CD59 Molecule, complement regulatory protein  
Synonyms: 16.3A5,1F5,EJ16,EJ30,EL32,FLJ38134,FLJ92039,G344,HRF-20,HRF20,MAC-IP,MACIF,MEM43,MGC2354,MIC11,MIN1,MIN2,MIN3,MIRL,MSK21,p18-20

Gene ID: 966

NCBI Accession: [NM\\_000611](#)

Pathways: [Complement System](#)

## Application Details

Application Notes: Optimal working dilution should be determined by the investigator.

Restrictions: For Research Use only

## Handling

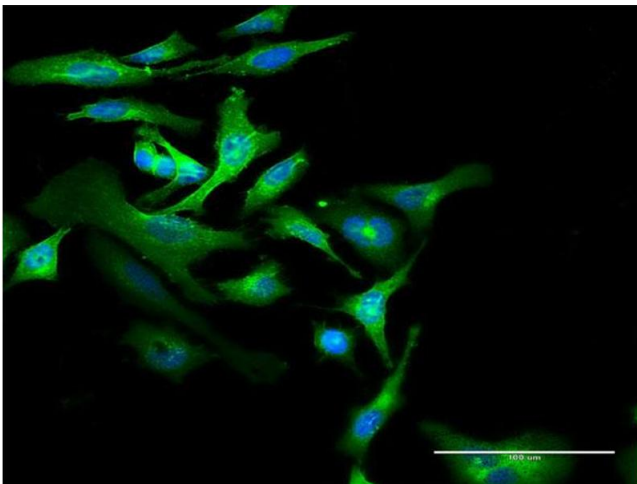
Buffer: In 1x PBS, pH 7.4

Handling Advice: Aliquot to avoid repeated freezing and thawing.

Storage: -20 °C

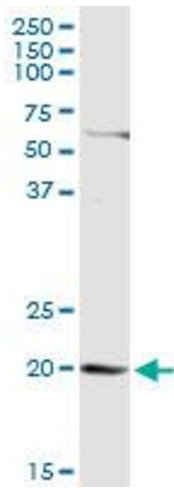
Storage Comment: Store at -20°C or lower. Aliquot to avoid repeated freezing and thawing.

## Images



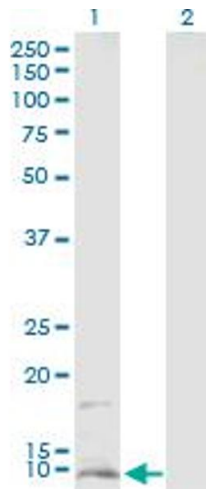
### Immunofluorescence

**Image 1.** Immunofluorescence of purified MaxPab antibody to CD59 on HeLa cell. [antibody concentration 20 ug/ml]



### Western Blotting

**Image 2.** CD59 MaxPab rabbit polyclonal antibody. Western Blot analysis of CD59 expression in A-431.



### Western Blotting

**Image 3.** Western Blot analysis of CD59 expression in transfected 293T cell line by CD59 MaxPab polyclonal antibody.

Lane 1: CD59 transfected lysate(14.20 kDa).

Lane 2: Non-transfected lysate.