



[Go to Product page](#)

Datasheet for ABIN514242  
**anti-CDC5L antibody (AA 719-802)**

3 Images

Overview

Quantity:	100 µg
Target:	CDC5L
Binding Specificity:	AA 719-802
Reactivity:	Human
Host:	Mouse
Clonality:	Monoclonal
Conjugate:	This CDC5L antibody is un-conjugated
Application:	Western Blotting (WB), ELISA

Product Details

Purpose:	Mouse monoclonal antibody raised against a partial recombinant CDC5L.
Immunogen:	CDC5L (NP_001244, 719 a.a. ~ 802 a.a) partial recombinant protein with GST tag. MW of the GST tag alone is 26 KDa.
Sequence:	ILLGGYQSRA MGLMKQLNDL WDQIEQAHLE LRTFEELKKH EDSAIPRRLE CLKEDVQRQQ EREKELQHRY ADLLEKETL KSKF
Clone:	3C12
Isotype:	IgG2a
Cross-Reactivity:	Human
Characteristics:	Antibody Reactive Against Recombinant Protein.

## Target Details

Target:	CDC5L
Alternative Name:	CDC5L ( <a href="#">CDC5L Products</a> )
Background:	Full Gene Name: CDC5 cell division cycle 5-like (S. pombe) Synonyms: CEF1,KIAA0432,PCDC5RP,dJ319D22.1,hCDC5
Gene ID:	988
NCBI Accession:	<a href="#">NM_001253</a>
Pathways:	<a href="#">Activation of Innate immune Response</a> , <a href="#">Chromatin Binding</a>

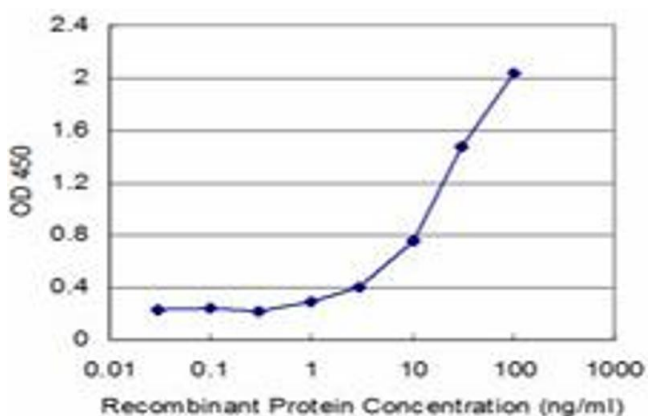
## Application Details

Application Notes:	Optimal working dilution should be determined by the investigator.
Restrictions:	For Research Use only

## Handling

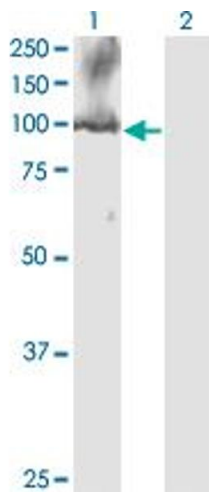
Buffer:	In 1x PBS, pH 7.4
Handling Advice:	Aliquot to avoid repeated freezing and thawing.
Storage:	-20 °C
Storage Comment:	Store at -20°C or lower. Aliquot to avoid repeated freezing and thawing.

## Images



### ELISA

**Image 1.** Detection limit for recombinant GST tagged CDC5L is approximately 1ng/ml as a capture antibody.

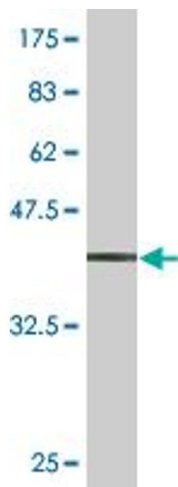


### Western Blotting

**Image 2.** Western Blot analysis of CDC5L expression in transfected 293T cell line by CDC5L monoclonal antibody (M08), clone 3C12.

Lane 1: CDC5L transfected lysate(92.3 kDa).

Lane 2: Non-transfected lysate.



### Western Blotting

**Image 3.** Western Blot detection against Immunogen (34.98 kDa).