

Datasheet for ABIN514244
anti-CDC6 antibody (AA 1-560)



[Go to Product page](#)

5 Images

Overview

Quantity:	100 µg
Target:	CDC6
Binding Specificity:	AA 1-560
Reactivity:	Human
Host:	Rabbit
Clonality:	Polyclonal
Conjugate:	This CDC6 antibody is un-conjugated
Application:	Western Blotting (WB), Immunofluorescence (IF), Proximity Ligation Assay (PLA)

Product Details

Purpose:	Rabbit polyclonal antibody raised against a full-length human CDC6 protein.
Immunogen:	CDC6 (AAH25232.1, 1 a.a. ~ 560 a.a) full-length human protein.
Sequence:	MPQTRSQAQA TISFPKRKLS RALNKAKNSS DAKLEPTNVQ TVTCSPRVKA LPLSPRKRLG DDNLCNTPHL PPCSPPKQ GK KENGPPHSHT LKGRRLVFDN QLTIKSPSKR ELAKVHQNKI LSSVRKSQEI TTNSEQRCPL KKEACVRLF KQEGTCYQQA KLVNLTAVPD RLPAREREMD VIRNFLREHI CGKKAGSLYL SGAPGTGKTA CLSRILQDLK KELKGFTIM LNCMSLRTAQ AVFPAIAQEI CQEEVSRPAG KDMMRKLEKH MTAEKGPMIV LVLDEMDQLD SKGQDVLYTL FEWPWLSNSH LVLIGIANTL DLTDRILPRL QAREKCKPQL LNFPYTRNQ IVTILQDRLN QVSRDQVLDN AAVQFCARKV SAVSGDVRKA LDVCRRAIEI VESDVKSQTI LKPLSECKSP SEPLIPKRVG LIHSQVISE IDGNRMTLSQ EGAQDSFPLQ QKILVCSLML LIRQLKIKEV TLGKLYEAYS KVCRKQVAA VDQSECLSLS GLLARGILG LKRNETRLT KVFFKIEEKE IEHALKDKAL IGNILATGLP

Product Details

Cross-Reactivity:	Human
Characteristics:	Antibody reactive against mammalian transfected lysate.

Target Details

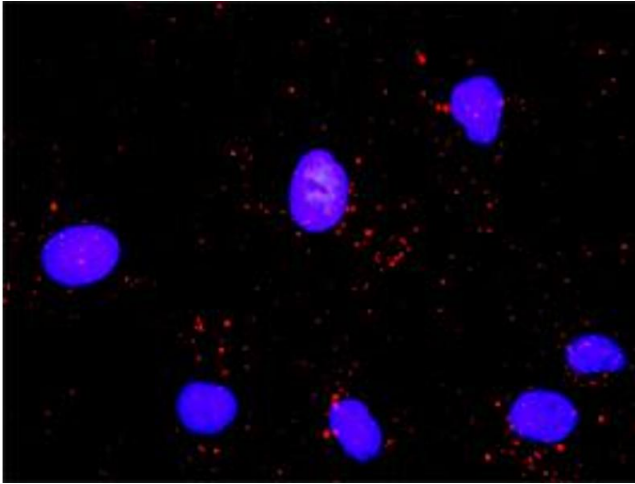
Target:	CDC6
Alternative Name:	CDC6 (CDC6 Products)
Background:	Full Gene Name: cell division cycle 6 homolog (S. cerevisiae) Synonyms: CDC18L,HsCDC18,HsCDC6
Gene ID:	990
Pathways:	DNA Replication , Synthesis of DNA

Application Details

Application Notes:	Optimal working dilution should be determined by the investigator.
Restrictions:	For Research Use only

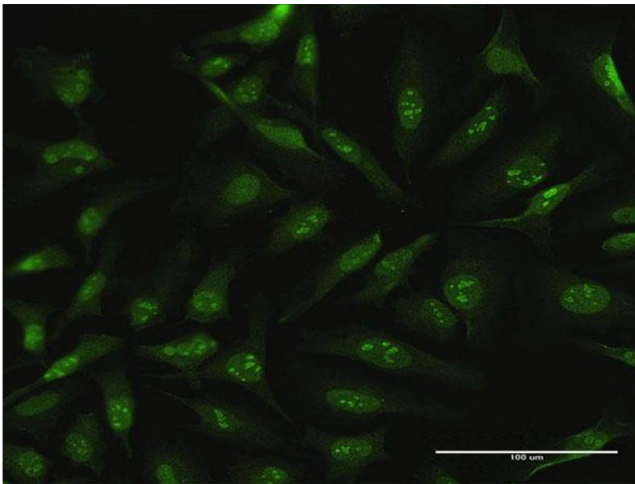
Handling

Buffer:	In 1x PBS, pH 7.4
Handling Advice:	Aliquot to avoid repeated freezing and thawing.
Storage:	-20 °C
Storage Comment:	Store at -20°C or lower. Aliquot to avoid repeated freezing and thawing.



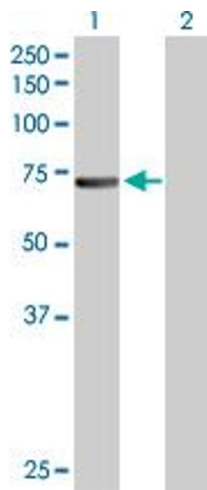
Proximity Ligation Assay

Image 1. Proximity Ligation Analysis of protein-protein interactions between CDC6 and PCNA. Mahlavu cells were stained with anti-CDC6 rabbit purified polyclonal 1:1200 and anti-PCNA mouse monoclonal antibody 1:50. Each red dot represents the detection of protein-protein interaction complex, and nuclei were counterstained with DAPI (blue).



Immunofluorescence

Image 2. Immunofluorescence of purified MaxPab antibody to CDC6 on HeLa cell. [antibody concentration 10 µg/ml]



Western Blotting

Image 3. Western Blot analysis of CDC6 expression in transfected 293T cell line by CDC6 MaxPab polyclonal antibody.

Lane 1: CDC6 transfected lysate(62.70 KDa).

Lane 2: Non-transfected lysate.

Please check the [product details page](#) for more images. Overall 5 images are available for ABIN514244.