

Datasheet for ABIN514252
anti-CDC42 antibody (AA 1-191)[Go to Product page](#)

2 Images

Overview

Quantity:	100 µg
Target:	CDC42
Binding Specificity:	AA 1-191
Reactivity:	Human
Host:	Rabbit
Clonality:	Polyclonal
Conjugate:	This CDC42 antibody is un-conjugated
Application:	Western Blotting (WB), Proximity Ligation Assay (PLA)

Product Details

Purpose:	Rabbit polyclonal antibody raised against a full-length human CDC42 protein.
Immunogen:	CDC42 (NP_001782.1, 1 a.a. ~ 191 a.a) full-length human protein.
Sequence:	MQTIKCVVVG DGAVGKTCLL ISYTTNKFPS EYVPTVFDNY AVTVMIGGEP YTLGLFDTAG QEDYDRLRPL SYPQTDVFLV CFSVSPSSF ENVKEKWVPE ITHHCPKTPF LLVGTQIDLR DDPSTIEKLA KNKQKPITPE TAEKLARDLK AVKYVECSAL TQKGLKNVFD EILAALEPP EPKKSRRCVL L
Cross-Reactivity:	Human
Characteristics:	Antibody reactive against mammalian transfected lysate.

Target Details

Target:	CDC42
---------	-------

Target Details

Alternative Name:	CDC42 (CDC42 Products)
Background:	Full Gene Name: cell division cycle 42 (GTP binding protein, 25 kDa) Synonyms: CDC42Hs,G25K
Gene ID:	998
NCBI Accession:	NM_001791
Pathways:	MAPK Signaling , Microtubule Dynamics , RTK Signaling , WNT Signaling , TCR Signaling , EGFR Signaling Pathway , Regulation of Actin Filament Polymerization , Regulation of Muscle Cell Differentiation , Cell-Cell Junction Organization , Maintenance of Protein Location , Skeletal Muscle Fiber Development , Signaling Events mediated by VEGFR1 and VEGFR2 , EGFR Downregulation , VEGF Signaling

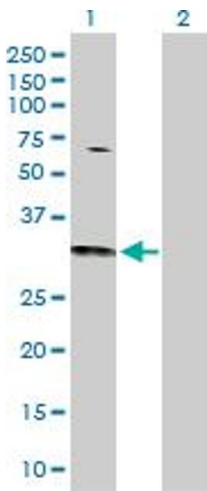
Application Details

Application Notes:	Optimal working dilution should be determined by the investigator.
Restrictions:	For Research Use only

Handling

Buffer:	In 1x PBS, pH 7.4
Handling Advice:	Aliquot to avoid repeated freezing and thawing.
Storage:	-20 °C
Storage Comment:	Store at -20°C or lower. Aliquot to avoid repeated freezing and thawing.

Images

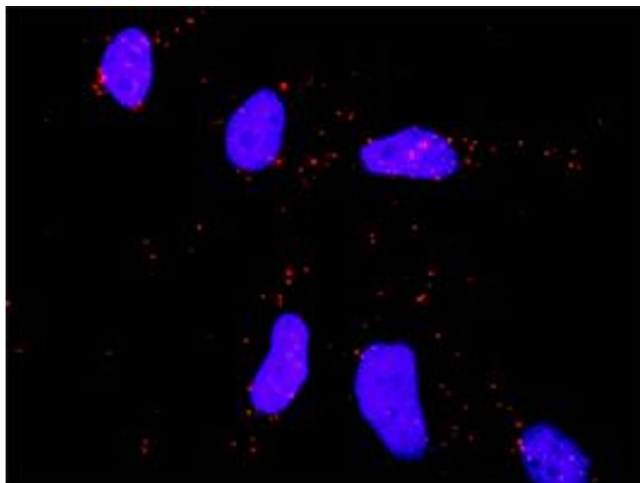


Western Blotting

Image 1. Western Blot analysis of CDC42 expression in transfected 293T cell line by CDC42 MaxPab polyclonal antibody.

Lane 1: CDC42 transfected lysate(21.30 KDa).

Lane 2: Non-transfected lysate.



Proximity Ligation Assay

Image 2. Proximity Ligation Analysis of protein-protein interactions between CDC42 and MAPK8. HeLa cells were stained with anti-CDC42 rabbit purified polyclonal 1:1200 and anti-MAPK8 mouse monoclonal antibody 1:50. Each red dot represents the detection of protein-protein interaction complex, and nuclei were counterstained with DAPI (blue).