

Datasheet for ABIN514274
anti-CDK4 antibody (AA 1-303)



[Go to Product page](#)

2 Images

Overview

Quantity:	100 µg
Target:	CDK4
Binding Specificity:	AA 1-303
Reactivity:	Human
Host:	Rabbit
Clonality:	Polyclonal
Conjugate:	This CDK4 antibody is un-conjugated
Application:	Western Blotting (WB), Proximity Ligation Assay (PLA)

Product Details

Purpose:	Rabbit polyclonal antibody raised against a full-length human CDK4 protein.
Immunogen:	CDK4 (NP_000066.1, 1 a.a. ~ 303 a.a) full-length human protein.
Sequence:	MATSRYPVA EIGVGAYGTV YKARDPHSGH FVALKSVRVP NGGGGGGLP ISTVREVALL RRLEAFEHPN WVRLMDVCAT SRTDREIKVT LVFEHVDQDL RTYLDKAPPP GLPAETIKDL MRQFLRGLDF LHANCIVHRD LKPENILVTS GGTVKLADFG LARIYSYQMA LTPVVVTLWY RAPEVLLQST YATPDMWSV GCIFAEMFRR KPLFCGNSEA DQLGKIFDLI GLPPEDDWPR DVSLPRGAFP PRGPRPVQSV VPHEMEEGAQ LLEMLTFNP HKRISAFRAL QHSYLHKDEG NPE
Cross-Reactivity:	Human
Characteristics:	Antibody reactive against mammalian transfected lysate.

Target Details

Target:	CDK4
Alternative Name:	CDK4 (CDK4 Products)
Background:	Full Gene Name: cyclin-dependent kinase 4 Synonyms: CMM3,MGC14458,PSK-J3
Gene ID:	1019
NCBI Accession:	NM_000075
Pathways:	Cell Division Cycle, Mitotic G1-G1/S Phases, Regulation of Cell Size

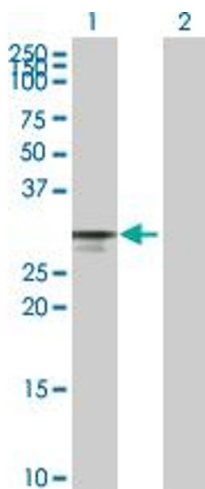
Application Details

Application Notes:	Optimal working dilution should be determined by the investigator.
Restrictions:	For Research Use only

Handling

Buffer:	In 1x PBS, pH 7.4
Handling Advice:	Aliquot to avoid repeated freezing and thawing.
Storage:	-20 °C
Storage Comment:	Store at -20°C or lower. Aliquot to avoid repeated freezing and thawing.

Images

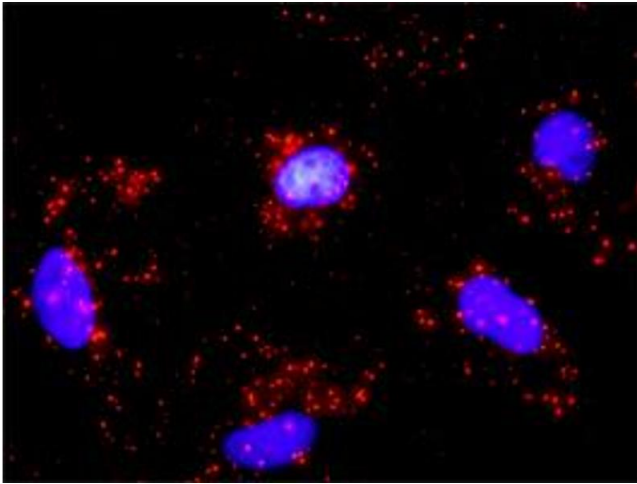


Western Blotting

Image 1. Western Blot analysis of CDK4 expression in transfected 293T cell line by CDK4 MaxPab polyclonal antibody.

Lane 1: CDK4 transfected lysate(33.70 kDa).

Lane 2: Non-transfected lysate.



Proximity Ligation Assay

Image 2. Proximity Ligation Analysis of protein-protein interactions between CDK4 and CDKN1B. HeLa cells were stained with anti-CDK4 rabbit purified polyclonal 1:1200 and anti-CDKN1B mouse monoclonal antibody 1:50. Each red dot represents the detection of protein-protein interaction complex, and nuclei were counterstained with DAPI (blue).