

Datasheet for ABIN514285
anti-CDK6 antibody (AA 1-326)



[Go to Product page](#)

2 Images

Overview

Quantity:	50 µL
Target:	CDK6
Binding Specificity:	AA 1-326
Reactivity:	Human
Host:	Mouse
Clonality:	Polyclonal
Conjugate:	This CDK6 antibody is un-conjugated
Application:	Western Blotting (WB), Immunofluorescence (IF)

Product Details

Purpose:	Mouse polyclonal antibody raised against a full-length human CDK6 protein.
Immunogen:	CDK6 (NP_001250, 1 a.a. ~ 326 a.a) full-length human protein.
Sequence:	MEKDGLCRAD QQYECVAEIG EGAYGKVFKA RDLKNGGRFV ALKRVRVQTG EEGMPLSTIR EVAVLRHLET FEHPNVVRLF DVCTVSRTDR ETKLTLVFEH VDQDLTTYLD KVPEPGVPTE TIKDMMFQLL RGLDFLHSHR VVHRDLKPQN ILVTSSGQIK LADFGGLARIY SFQMALTSVV VTLWYRAPEV LLQSSYATPV DLWSVGCIFA EMFRRKPLFR GSSDVDQLGK ILDVIGLPGE EDWPRDVALP RQAFHSKSAQ PIEKFVTDID ELGKDLLLKC LTFNPAKRIS AYSALSHPYF QDLERCKENL DSHLPPSQNT SELNTA
Cross-Reactivity:	Human
Characteristics:	Antibody reactive against mammalian transfected lysate.

Target Details

Target:	CDK6
Alternative Name:	CDK6 (CDK6 Products)
Background:	Full Gene Name: cyclin-dependent kinase 6 Synonyms: MGC59692,PLSTIRE,STQTL11
Gene ID:	1021
NCBI Accession:	NM_001259
Pathways:	Cell Division Cycle, Mitotic G1-G1/S Phases

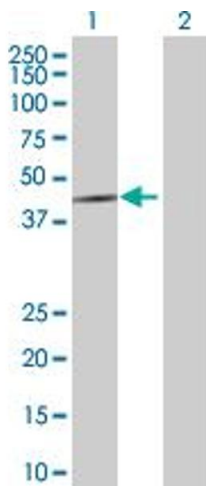
Application Details

Application Notes:	Optimal working dilution should be determined by the investigator.
Restrictions:	For Research Use only

Handling

Format:	Liquid
Buffer:	No additive
Preservative:	Without preservative
Handling Advice:	Aliquot to avoid repeated freezing and thawing.
Storage:	-20 °C
Storage Comment:	Store at -20°C or lower. Aliquot to avoid repeated freezing and thawing.

Images

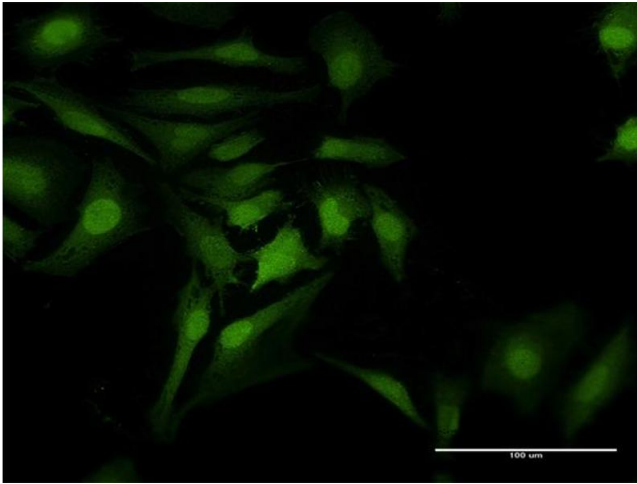


Western Blotting

Image 1. Western Blot analysis of CDK6 expression in transfected 293T cell line by CDK6 MaxPab polyclonal antibody.

Lane 1: CDK6 transfected lysate(35.86 kDa).

Lane 2: Non-transfected lysate.



Immunofluorescence

Image 2. Immunofluorescence of purified MaxPab antibody to CDK6 on HeLa cell. [antibody concentration 10 ug/ml]