



[Go to Product page](#)

Datasheet for ABIN514287
anti-CDK6 antibody (AA 1-326)

2 Images

Overview

Quantity:	100 µg
Target:	CDK6
Binding Specificity:	AA 1-326
Reactivity:	Human
Host:	Rabbit
Clonality:	Polyclonal
Conjugate:	This CDK6 antibody is un-conjugated
Application:	Western Blotting (WB), Proximity Ligation Assay (PLA)

Product Details

Purpose:	Rabbit polyclonal antibody raised against a full-length human CDK6 protein.
Immunogen:	CDK6 (NP_001250.1, 1 a.a. ~ 326 a.a) full-length human protein.
Sequence:	MEKDGLCRAD QQYECVAEIG EGAYGKVFKA RDLKNGGRFV ALKRVRVQTG EEGMPLSTIR EVAVLRHLET FEHPNVVRLF DVCTVSRTDR ETKLTLVFEH VDQDLTTYLD KVPEPGVPTE TIKMMFQLL RGLDFLHSHR VVHRDLKPQN ILVTSSGQIK LADFGGLARIY SFQMALTSV VTLWYRAPEV LLQSSYATPV DLWSVGCIFA EMFRRKPLFR GSSDVDQLGK ILDVIGLPGE EDWPRDVALP RQAFHSKSAQ PIEKFVTDID ELGKDLLLKC LTFNPAKRIS AYSALSHPYF QDLERCKENL DSHLPPSQNT SELNTA
Cross-Reactivity:	Human
Characteristics:	Antibody reactive against mammalian transfected lysate.

Target Details

Target:	CDK6
Alternative Name:	CDK6 (CDK6 Products)
Background:	Full Gene Name: cyclin-dependent kinase 6 Synonyms: MGC59692,PLSTIRE,STQTL11
Gene ID:	1021
NCBI Accession:	NM_001259
Pathways:	Cell Division Cycle, Mitotic G1-G1/S Phases

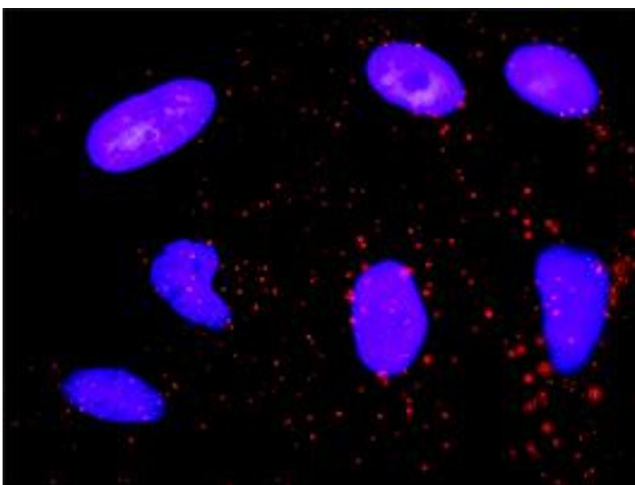
Application Details

Application Notes:	Optimal working dilution should be determined by the investigator.
Restrictions:	For Research Use only

Handling

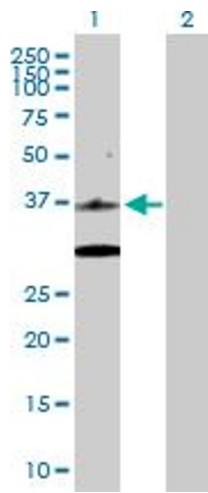
Buffer:	In 1x PBS, pH 7.4
Handling Advice:	Aliquot to avoid repeated freezing and thawing.
Storage:	-20 °C
Storage Comment:	Store at -20°C or lower. Aliquot to avoid repeated freezing and thawing.

Images



Proximity Ligation Assay

Image 1. Proximity Ligation Analysis of protein-protein interactions between CDK6 and CDKN1B. HeLa cells were stained with anti-CDK6 rabbit purified polyclonal 1:1200 and anti-CDKN1B mouse monoclonal antibody 1:50. Each red dot represents the detection of protein-protein interaction complex, and nuclei were counterstained with DAPI (blue).



Western Blotting

Image 2. Western Blot analysis of CDK6 expression in transfected 293T cell line by CDK6 MaxPab polyclonal antibody.

Lane 1: CDK6 transfected lysate(36.90 kDa).

Lane 2: Non-transfected lysate.