

Datasheet for ABIN514290
anti-CDK7 antibody (AA 1-346)[Go to Product page](#)

4 Images

Overview

Quantity:	100 µg
Target:	CDK7
Binding Specificity:	AA 1-346
Reactivity:	Human
Host:	Rabbit
Clonality:	Polyclonal
Conjugate:	This CDK7 antibody is un-conjugated
Application:	Western Blotting (WB), Proximity Ligation Assay (PLA)

Product Details

Purpose:	Rabbit polyclonal antibody raised against a full-length human CDK7 protein.
Immunogen:	CDK7 (NP_001790.1, 1 a.a. ~ 346 a.a) full-length human protein.
Sequence:	MALDVKSRAK RYEKLDLGE GQFATVYKAR DKNTNQIVAI KKIKLGRHSE AKDGINRTAL REIKLLQELS HPNIIGLLDA FGHKSNISLV FDFMETDLEV IIKDNSLVLT PSHIKAYMLM TLQGLEYLHQ HWILHRDLKP NNLLLDENG V LKLADFG LAK SFGSPNRAYT HQVVTRWYRA PELLFGARMY GVGVDMWAVG CILAE LLRV PFLPGDS DLD QLTRIFETLG TPTEEQWPDM CSLPDYVTFK SFPGIPLHHI FSAAGD D LLD LIQGLFLFNP CARITATQAL KMKYFSNRPG PTPGCQLPRP NCPVETLKEQ SNPALAIK RK RTEALEQGGL PKKLIF
Cross-Reactivity:	Human
Characteristics:	Antibody reactive against mammalian transfected lysate.

Target Details

Target:	CDK7
Alternative Name:	CDK7 (CDK7 Products)
Background:	Full Gene Name: cyclin-dependent kinase 7 Synonyms: CAK1,CDKN7,MO15,STK1,p39MO15
Gene ID:	1022
NCBI Accession:	NM_001799
Pathways:	Cell Division Cycle, DNA Damage Repair, Intracellular Steroid Hormone Receptor Signaling Pathway, Mitotic G1-G1/S Phases, M Phase

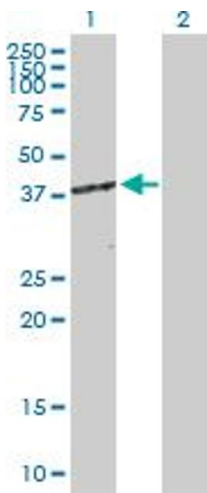
Application Details

Application Notes:	Optimal working dilution should be determined by the investigator.
Restrictions:	For Research Use only

Handling

Buffer:	In 1x PBS, pH 7.4
Handling Advice:	Aliquot to avoid repeated freezing and thawing.
Storage:	-20 °C
Storage Comment:	Store at -20°C or lower. Aliquot to avoid repeated freezing and thawing.

Images

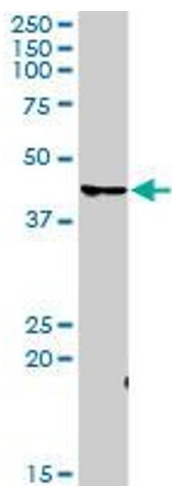


Western Blotting

Image 1. Western Blot analysis of CDK7 expression in transfected 293T cell line by CDK7 MaxPab polyclonal antibody.

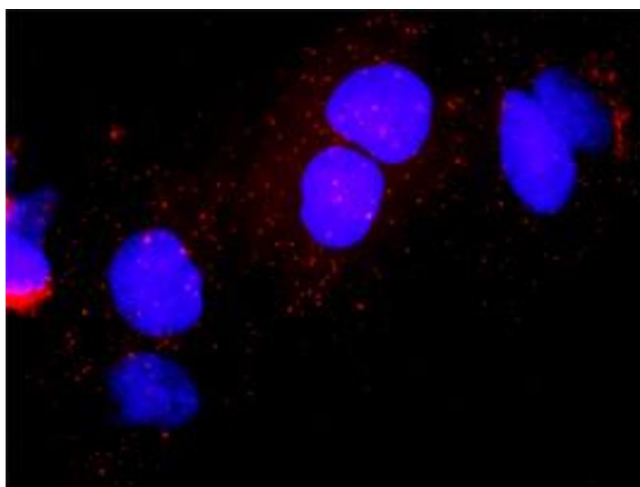
Lane 1: CDK7 transfected lysate(39.00 KDa).

Lane 2: Non-transfected lysate.



Western Blotting

Image 2. CDK7 MaxPab rabbit polyclonal antibody. Western Blot analysis of CDK7 expression in human pancreas.



Proximity Ligation Assay

Image 3. Proximity Ligation Analysis of protein-protein interactions between CDK7 and E2F1. Huh7 cells were stained with anti-CDK7 rabbit purified polyclonal 1:1200 and anti-E2F1 mouse monoclonal antibody 1:50. Each red dot represents the detection of protein-protein interaction complex, and nuclei were counterstained with DAPI (blue).

Please check the [product details page](#) for more images. Overall 4 images are available for ABIN514290.