



Datasheet for ABIN514313
anti-CDR2 antibody (AA 1-454)



[Go to Product page](#)

1 Image

Overview

Quantity:	100 µL
Target:	CDR2
Binding Specificity:	AA 1-454
Reactivity:	Human
Host:	Rabbit
Clonality:	Polyclonal
Conjugate:	This CDR2 antibody is un-conjugated
Application:	Western Blotting (WB)

Product Details

Purpose:	Rabbit polyclonal antibody raised against a full-length human CDR2 protein.
Immunogen:	CDR2 (NP_001793.1, 1 a.a. ~ 454 a.a) full-length human protein.
Sequence:	MLAENLVEEF EMKEDEPWYD HQDLQQLL AAELGKLLD RNTLEDVSVQ QMYTTNQEQL QEIEYLTKQV ELLRQMNEQH AKVYEQLDVT ARELEETNQK LVADSKASQQ KILSLTETIE CLQTNIDHLQ SQVEELKSSG QGRRSPGKCD QEKPAFSFAC LKELYDLRQH FVYDHFVFAEK ITSLQGQPSP DEEENEHLKK TVTMLQAQLS LERQKRVTME EEEGLVLKEN SELEQQLGAT GAYRARALEL EAEVAEMRQM LQSEHPFVNG VEKLVPSLSY VPFKEPSQL LEEMFLTVPE SHRKPLKRSS SETILSSLAG SDIVKGHEET CIRRAKAVKQ RGISLLHEVD TQYSALKVKY EELLKKCQEE QDSLCHKAVQ TSRAAAKDLT GVNAQSEPVA SGWELASVNP EPVSSPTTTP EYKALFKEIF SCIKKTKQEI DEQRTKYRSL SSHS
Cross-Reactivity:	Human

Product Details

Characteristics: Antibody reactive against mammalian transfected lysate.

Target Details

Target: CDR2

Alternative Name: CDR2 ([CDR2 Products](#))

Background: Full Gene Name: cerebellar degeneration-related protein 2, 62 kDa
Synonyms: CDR62,Yo

Gene ID: 1039

NCBI Accession: [NM_001802](#)

Application Details

Application Notes: Optimal working dilution should be determined by the investigator.

Restrictions: For Research Use only

Handling

Format: Liquid

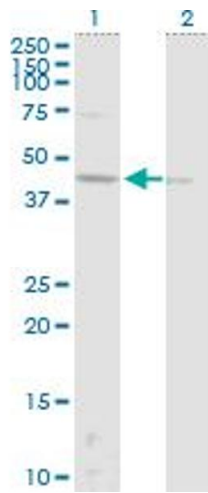
Buffer: No additive

Preservative: Without preservative

Handling Advice: Aliquot to avoid repeated freezing and thawing.

Storage: -20 °C

Storage Comment: Store at -20°C or lower. Aliquot to avoid repeated freezing and thawing.



Western Blotting

Image 1. Western Blot analysis of CDR2 expression in transfected 293T cell line by CDR2 MaxPab polyclonal antibody.

Lane 1: CDR2 transfected lysate(51.90 KDa).

Lane 2: Non-transfected lysate.