



[Go to Product page](#)

Datasheet for ABIN514314
anti-CDR2 antibody (AA 296-404)

4 Images

Overview

Quantity:	100 µg
Target:	CDR2
Binding Specificity:	AA 296-404
Reactivity:	Human
Host:	Mouse
Clonality:	Monoclonal
Conjugate:	This CDR2 antibody is un-conjugated
Application:	ELISA, Western Blotting (WB), Immunohistochemistry (Paraffin-embedded Sections) (IHC (p)), Immunofluorescence (IF)

Product Details

Purpose:	Mouse monoclonal antibody raised against a partial recombinant CDR2.
Immunogen:	CDR2 (NP_001793, 296 a.a. ~ 404 a.a) partial recombinant protein with GST tag. MW of the GST tag alone is 26 KDa.
Sequence:	LTVPESHKRP LKRSSSETIL SSLAGSDIVK GHEETCIRRA KAVKQRGISL LHEVDTQYSA LKVKYEELLK KCQEEQDSLS HKAVQTSRAA AKDLTGVNAQ SEPVASGWE
Clone:	1F8
Isotype:	IgG2b
Cross-Reactivity:	Human
Characteristics:	Antibody Reactive Against Recombinant Protein.

Target Details

Target:	CDR2
Alternative Name:	CDR2 (CDR2 Products)
Background:	Full Gene Name: cerebellar degeneration-related protein 2, 62 kDa Synonyms: CDR62,Yo
Gene ID:	1039
NCBI Accession:	NM_001802

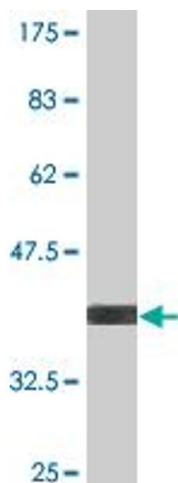
Application Details

Application Notes:	Optimal working dilution should be determined by the investigator.
Restrictions:	For Research Use only

Handling

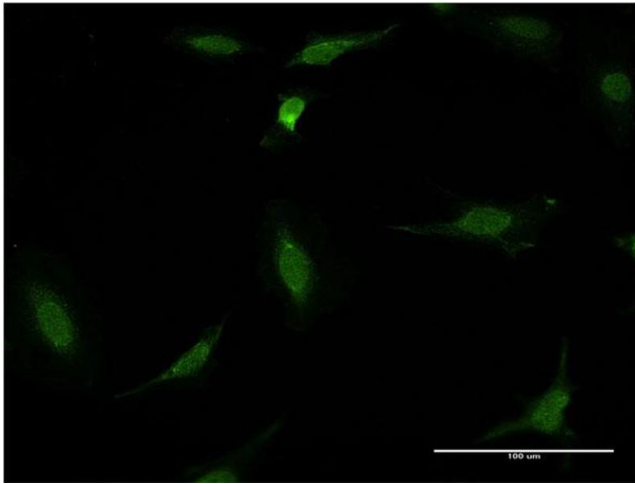
Buffer:	In 1x PBS, pH 7.4
Handling Advice:	Aliquot to avoid repeated freezing and thawing.
Storage:	-20 °C
Storage Comment:	Store at -20°C or lower. Aliquot to avoid repeated freezing and thawing.

Images



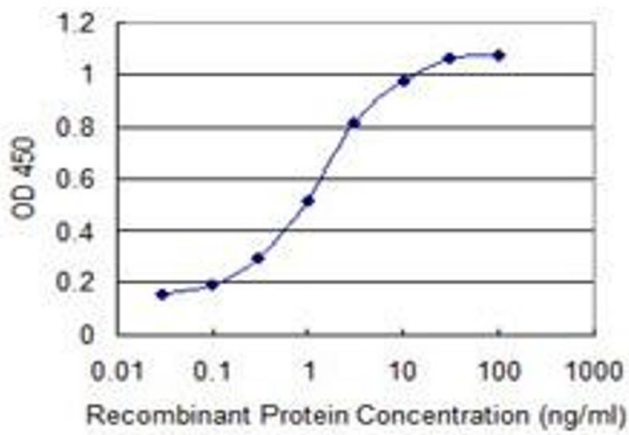
Western Blotting

Image 1. Western Blot detection against Immunogen (37.73 KDa) .



Immunofluorescence

Image 2. Immunofluorescence of monoclonal antibody to CDR2 on HeLa cell. [antibody concentration 10 ug/ml]



ELISA

Image 3. Detection limit for recombinant GST tagged CDR2 is 0.03 ng/ml as a capture antibody.

Please check the [product details page](#) for more images. Overall 4 images are available for ABIN514314.