



[Go to Product page](#)

Datasheet for ABIN514315
anti-CDR2 antibody (AA 1-454)

5 Images

Overview

Quantity:	100 µg
Target:	CDR2
Binding Specificity:	AA 1-454
Reactivity:	Human
Host:	Mouse
Clonality:	Monoclonal
Conjugate:	This CDR2 antibody is un-conjugated
Application:	ELISA, Western Blotting (WB), Immunofluorescence (IF)

Product Details

Purpose:	Mouse monoclonal antibody raised against a full-length recombinant CDR2.
Immunogen:	CDR2 (AAH17503, 1 a.a. ~ 454 a.a) full-length recombinant protein with GST tag. MW of the GST tag alone is 26 KDa.
Sequence:	MLAENLVEEF EMKEDEPWYD HQDLQDDLQL AAELGKTL LD RNTLED SVQ QMYTTNQEQL QEIEYLTKQV ELLRQMNEQH AKVYEQLDVT ARELEETN QK LVADSKASQQ KILSLTETIE CLQTNIDHLQ SQVEELKSSG QGRRSPGKCD QEKPA SFAC LKELYDLRQH FVYDHVFAEK ITSLQGQPSP DEEENEHLKK TVTMLQAQLS LERQKRVTME EEEGLVLKEN SELEQQLGAT GAYRARALEL EAEVAEMRQM LQSEHPFVNG VEKLV PDSLY VPFKEPSQL LEEMFLT VPE SHRKPLKRSS SETILSSLAG SDIVKGHEET CIRRAKAVKQ RGISLLHEVD TQYSALKVKY EELLKCCQEE QDSL SHKAVQ TSRAAAKDLT GVNAQSEPVA SGWELASVNP EPVSSPTTPP EYKALFKEIF SCIKKTKQEI DEQRTKYRSL SSHS

Product Details

Clone:	4D2
Isotype:	IgG2b
Cross-Reactivity:	Human
Characteristics:	Antibody Reactive Against Recombinant Protein.

Target Details

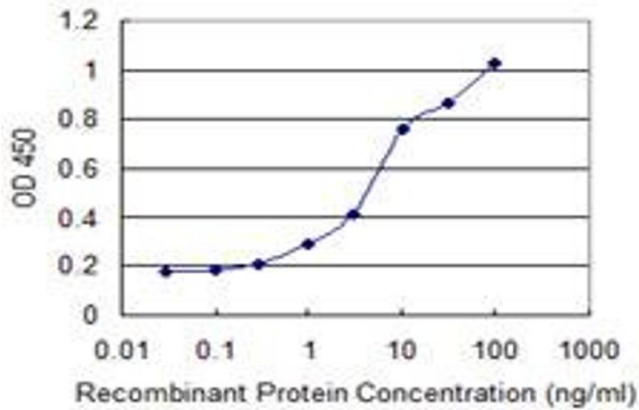
Target:	CDR2
Alternative Name:	CDR2 (CDR2 Products)
Background:	Full Gene Name: cerebellar degeneration-related protein 2, 62 kDa Synonyms: CDR62,Yo
Gene ID:	1039

Application Details

Application Notes:	Optimal working dilution should be determined by the investigator.
Restrictions:	For Research Use only

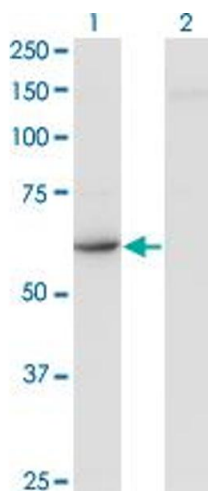
Handling

Buffer:	In 1x PBS, pH 7.4
Handling Advice:	Aliquot to avoid repeated freezing and thawing.
Storage:	-20 °C
Storage Comment:	Store at -20°C or lower. Aliquot to avoid repeated freezing and thawing.



ELISA

Image 1. Detection limit for recombinant GST tagged CDR2 is 0.3 ng/ml as a capture antibody.

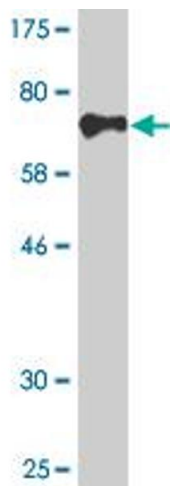


Western Blotting

Image 2. Western Blot analysis of CDR2 expression in transfected 293T cell line by CDR2 monoclonal antibody (M03), clone 4D2.

Lane 1: CDR2 transfected lysate (Predicted MW: 51.9 KDa).

Lane 2: Non-transfected lysate.



Western Blotting

Image 3. Western Blot detection against Immunogen (75.68 KDa).

Please check the [product details page](#) for more images. Overall 5 images are available for ABIN514315.