



[Go to Product page](#)

Datasheet for ABIN514336
anti-CEBPG antibody (AA 1-150)

2 Images

Overview

Quantity:	100 µL
Target:	CEBPG
Binding Specificity:	AA 1-150
Reactivity:	Human
Host:	Rabbit
Clonality:	Polyclonal
Conjugate:	This CEBPG antibody is un-conjugated
Application:	Western Blotting (WB), Immunoprecipitation (IP)

Product Details

Purpose:	Rabbit polyclonal antibody raised against a full-length human CEBPG protein.
Immunogen:	CEBPG (NP_001797.1, 1 a.a. ~ 150 a.a) full-length human protein.
Sequence:	MSKISQQNST PGVNGISVIH TQAHASGLQQ VPQLVPAGPG GGGKAVAPSK QSKKSSPMDR NSDEYRQRRE RNNMAVKKSR LKSKQKAQDT LQRVNQLKEE NERLEAKIKL LTKELSVLKD LFLEHAHNLA DNVQSISTEN TTADGDNAGQ
Cross-Reactivity:	Human
Characteristics:	Antibody reactive against mammalian transfected lysate.

Target Details

Target:	CEBPG
---------	-------

Target Details

Alternative Name:	CEBPG (CEBPG Products)
Background:	Full Gene Name: CCAAT/enhancer binding protein (C/EBP), gamma Synonyms: GPE1BP,IG/EBP-1
Gene ID:	1054
NCBI Accession:	NM_001806
Pathways:	Positive Regulation of Response to DNA Damage Stimulus

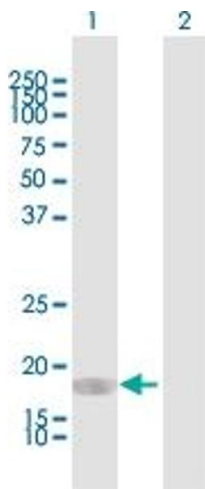
Application Details

Application Notes:	Optimal working dilution should be determined by the investigator.
Restrictions:	For Research Use only

Handling

Format:	Liquid
Buffer:	No additive
Preservative:	Without preservative
Handling Advice:	Aliquot to avoid repeated freezing and thawing.
Storage:	-20 °C
Storage Comment:	Store at -20°C or lower. Aliquot to avoid repeated freezing and thawing.

Images

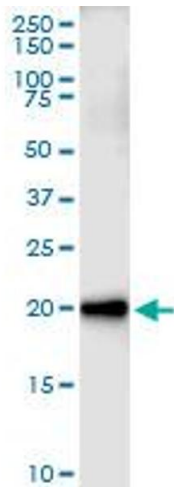


Western Blotting

Image 1. Western Blot analysis of CEBPG expression in transfected 293T cell line by CEBPG MaxPab polyclonal antibody.

Lane 1: CEBPG transfected lysate(16.4 kDa).

Lane 2: Non-transfected lysate.



Immunoprecipitation

Image 2. Immunoprecipitation of CEBPG transfected lysate using anti-CEBPG MaxPab rabbit polyclonal antibody and Protein A Magnetic Bead , and immunoblotted with CEBPG MaxPab mouse polyclonal antibody (B01) .