



[Go to Product page](#)

Datasheet for ABIN514344
anti-CES1 antibody (AA 1-566)

2 Images

Overview

Quantity:	50 µg
Target:	CES1
Binding Specificity:	AA 1-566
Reactivity:	Human
Host:	Mouse
Clonality:	Polyclonal
Conjugate:	This CES1 antibody is un-conjugated
Application:	Western Blotting (WB)

Product Details

Purpose:	Mouse polyclonal antibody raised against a full-length human CES1 protein.
Immunogen:	CES1 (AAH12418.1, 1 a.a. ~ 566 a.a) full-length human protein.
Sequence:	MWLPALVLAT LAASAAWGHP SSPPVVDTVH GKVLGKFVSL EGFAQPVAIF LGIPFAKPPPL GPLRFTPPQP AEPWSFVKNA TSYPPMCTQD PKAGQLLSEL FTNRKENIPL KLSDECLYLN IYTPADLTKK NRLPVMVWIH GGGLMVGAAS TYDGLALAAH ENVVVVTIQY RLGIWGFFST GDEHSRGNWG HLDQVAALRW VQDNIAFSGG NPGSVTIFGE SAGGESVSVL VLSPLAKNLF HRAISEGVA LTSVLVKKGD VKPLAEQIAI TAGCKTTTSA VMVHCLRQKT EEELLETTLK MKFLSLDLQG DPRESQPLL G TVIDGMLLLK TPEELQAERN FHTVPYMGVI NKQEFGWLIP MLMSYPLSEG QLDQKTAMSL LWKSYPLVCI AKELIPEATE KYLGGTDDTV KKKDLFLDLI ADVMFGVPSV IVARNHRDAG APTYMYEFQY RPSFSSDMKP KTVIGDHGDE LFSVFGAPFL KEGASEEEIR LSKMVMKFWA NFARNGNPNG EGLPHWPEYN QKEGYLQIGA NTQAAQKLKD KEVAFWTNLF AKKAVEKPPQ TEHIEL

Product Details

Cross-Reactivity:	Human
Characteristics:	Antibody reactive against mammalian transfected lysate.

Target Details

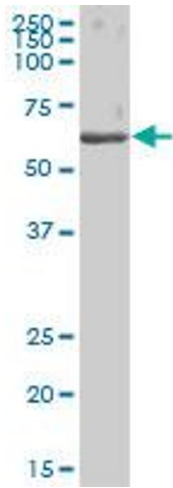
Target:	CES1
Alternative Name:	CES1 (CES1 Products)
Background:	Full Gene Name: carboxylesterase 1 (monocyte/macrophage serine esterase 1) Synonyms: ACAT,CEH,CES2,HMSE,HMSE1,MGC117365,PCE-1,SES1,TGH
Gene ID:	1066
Pathways:	Monocarboxylic Acid Catabolic Process

Application Details

Application Notes:	Optimal working dilution should be determined by the investigator.
Restrictions:	For Research Use only

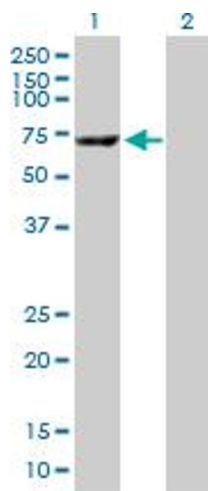
Handling

Buffer:	In 1x PBS, pH 7.4
Handling Advice:	Aliquot to avoid repeated freezing and thawing.
Storage:	-20 °C
Storage Comment:	Store at -20°C or lower. Aliquot to avoid repeated freezing and thawing.



Western Blotting

Image 1. CES1 MaxPab polyclonal antibody. Western Blot analysis of CES1 expression in human liver.



Western Blotting

Image 2. Western Blot analysis of CES1 expression in transfected 293T cell line by CES1 MaxPab polyclonal antibody.

Lane 1: CES1 transfected lysate(62.26 KDa).

Lane 2: Non-transfected lysate.