

Datasheet for ABIN514379
anti-CHEK1 antibody (AA 361-476)



[Go to Product page](#)

2 Images

Overview

Quantity:	100 µg
Target:	CHEK1
Binding Specificity:	AA 361-476
Reactivity:	Human
Host:	Mouse
Clonality:	Monoclonal
Conjugate:	This CHEK1 antibody is un-conjugated
Application:	ELISA, Immunofluorescence (IF)

Product Details

Purpose:	Mouse monoclonal antibody raised against a partial recombinant CHEK1.
Immunogen:	CHEK1 (AAH04202, 361 a.a. ~ 476 a.a) partial recombinant protein with GST tag. MW of the GST tag alone is 26 KDa.
Sequence:	GTPGSSQNPW QRLVKRMTRF FTKLDADKSY QCLKETCEKL GYQWKKSCMN QVTISTTDRR NNKLIFKVN LEMDDKILVD FRLSKGDGLE FKRHFLKIKG KLIDIVSSQK VWLPAT
Clone:	2G3
Isotype:	IgG2b
Cross-Reactivity:	Human
Characteristics:	Antibody Reactive Against Recombinant Protein.

Target Details

Target:	CHEK1
Alternative Name:	CHEK1 (CHEK1 Products)
Background:	Full Gene Name: CHK1 checkpoint homolog (S. pombe) Synonyms: CHK1
Gene ID:	1111
Pathways:	p53 Signaling , Apoptosis , Cell Division Cycle , DNA Damage Repair

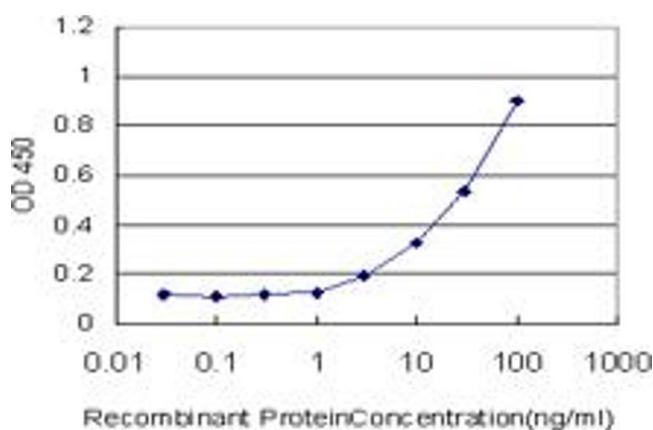
Application Details

Application Notes:	Optimal working dilution should be determined by the investigator.
Restrictions:	For Research Use only

Handling

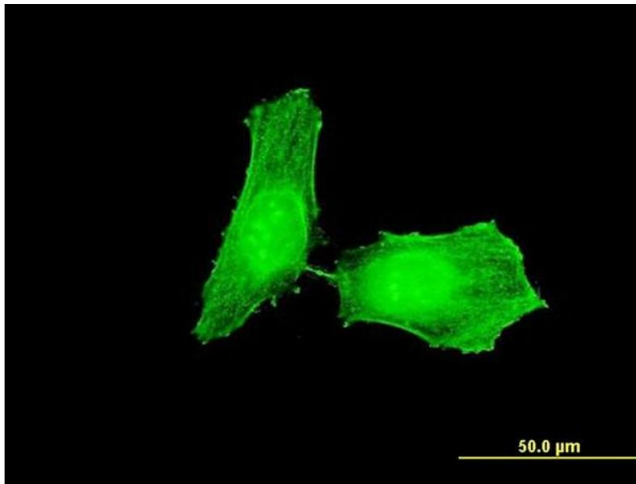
Buffer:	In 1x PBS, pH 7.4
Handling Advice:	Aliquot to avoid repeated freezing and thawing.
Storage:	-20 °C
Storage Comment:	Store at -20°C or lower. Aliquot to avoid repeated freezing and thawing.

Images



ELISA

Image 1. Detection limit for recombinant GST tagged CHEK1 is approximately 1ng/ml as a capture antibody.



Immunofluorescence

Image 2. Immunofluorescence of monoclonal antibody to CHEK1 on HeLa cell. [antibody concentration 10 ug/ml]